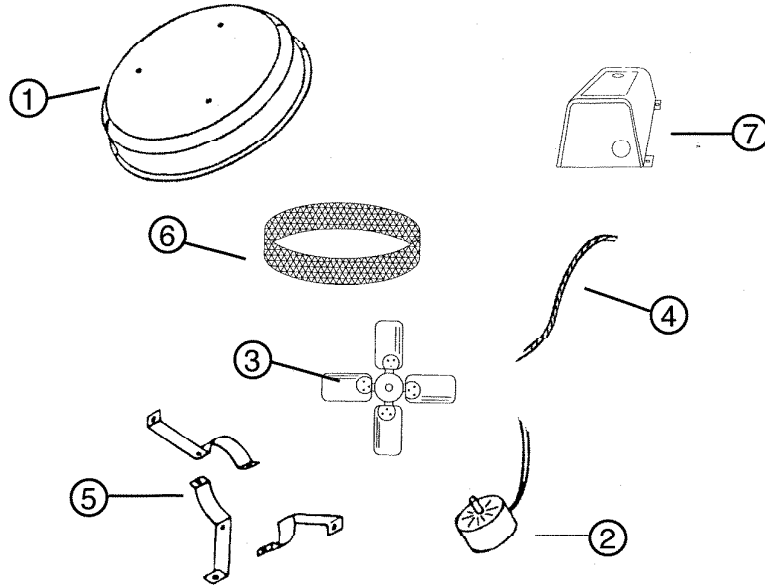


PARTS LIST

EFFECTIVE DATE	MODEL NUMBER	PRODUCT GROUP
JANUARY 1999	RF-49RP, RF-49AM, RF-49WG, RF-49BR	FAN



REF.	ORIGINAL PART NO.	PART DESCRIPTION	MODEL USED ON	CURRENT REPLACEMENT PART NO.
1	0702B	COVER	RF-49RP	0702B-000
	0703B	COVER	RF-49AM	0703B-000
	0704B	COVER	RF-49WG	0704B-000
	0705B	COVER	RF-49BR	0705B-000
2	0706B	MOTOR	RF-49RP, RF-49AM, RF-WG, RF-BR	0706B-000
3	0707B	BLADE	RF-49RP, RF-49AM, RF-WG, RF-BR	0707B-000
4	0708B	CONDUIT	RF-49RP, RF-49AM, RF-WG, RF-BR	0708B-000
5	0709B	MOTOR MOUNTING BRACKET (1 OF 3)	RF-49RP, RF-49AM, RF-WG, RF-BR	0709B-000
6	0710B	BIRD GUARD	RF-49RP, RF-49AM, RF-WG, RF-BR	0710B-000
7	0711B	OUTLET BOX THERMOSTAT ASSY	RF-49RP, RF-49AM, RF-WG, RF-BR	0711B-000

NOTE: Always order by current part number

RF-49 Series I.I.

NuTone®

NuTone
 Attn: Parts Department
 4820 Red Bank Road
 Cincinnati, OH 45227-1599
 Phone: (513) 527-5426
 Fax: (513) 527-5173