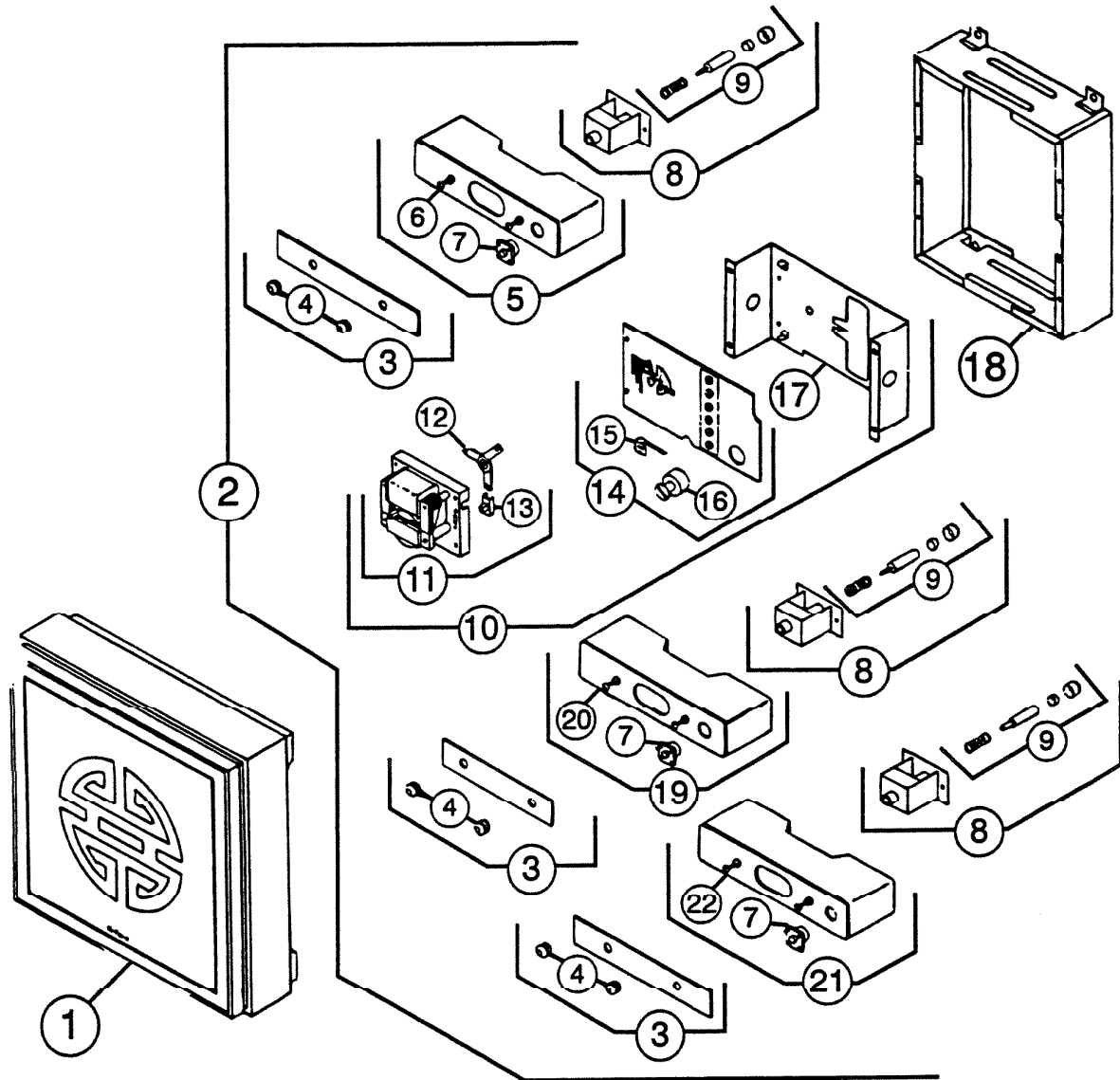


PARTS LIST

EFFECTIVE DATE	MODEL NUMBER	PRODUCT GROUP
AUGUST 1994	LA-84 REVISED	CHIME



REF.	ORIGINAL PART NO.	*PART DESCRIPTION	MODEL USED ON	CURRENT REPLACEMENT PART NO.
1	54803	COVER AND BRACKET ASSEMBLY	LA-84	1205A-000
2	64213	MECHANISM ASSEMBLY (May be returned for repair)	LA-84	Void - not avail.
(PLEASE SEE OTHER SIDE)				

NuTone

NuTone
 Attn: Parts Department
 Madison & Red Bank Rds.
 Cincinnati, OH 45227-1599
 Phone: (513) 527-5426
 Fax: (513) 527-5173

↑

NOTE: Always order by current part number

REF.	ORIGINAL PART NO.	*PART DESCRIPTION	MODEL USED ON	CURRENT REPLACEMENT PART NO.
3	06548	REED SET WITH GROMMETS	LA-84	Void - not avail.
4	69697	GROMMET SET - 6	LA-84	69691-000
5	07751	RESONATOR & PICK-UP COIL ASSEMBLY "A"	LA-84	Void - not avail.
6	07756	RESONATOR & STUD ASSEMBLY "A"	LA-84	Void - not avail.
7	07761	PICK-UP COIL ASSEMBLY	LA-84	Void - not avail.
8	08137	POWER UNIT ASSEMBLY	LA-84	08137-000
9	69628	PLUNGER SET	LA-84	69628-000
10	69679	SUB-MECH	LA-84	Void - not avail.
11	69688	MOTOR ASSEMBLY	LA-84	Void - not avail.
12	64173	ROTOR ASSEMBLY	LA-84	Void - not avail.
13	69543	SLIDE SWITCH ASSEMBLY	LA-84	69543-000
14	64184	P. C. BOARD ASSEMBLY	LA-84	Void - not avail.
15	64170	STARTING CONTACT	LA-84	65697-051
16	64215	VOLUME CONTROL	LA-84	Void - not avail.
17	64206	BASEPLATE	LA-84	64206-005
18	06585	HOUSING ASSEMBLY	LA-84	Void - not avail.
19	07753	RESONATOR & PICK-UP COIL ASSEMBLY "F"	LA-84	Void - not avail.
20	07758	RESONATOR & STUD ASSEMBLY "F"	LA-84	Void - not avail.
21	07752	RESONATOR & PICK-UP COIL ASSEMBLY "E"	LA-84	Void - not avail.
22	07757	RESONATOR & STUD ASSEMBLY "E"	LA-84	Void - not avail.

↑

NOTE: Always order by current part number