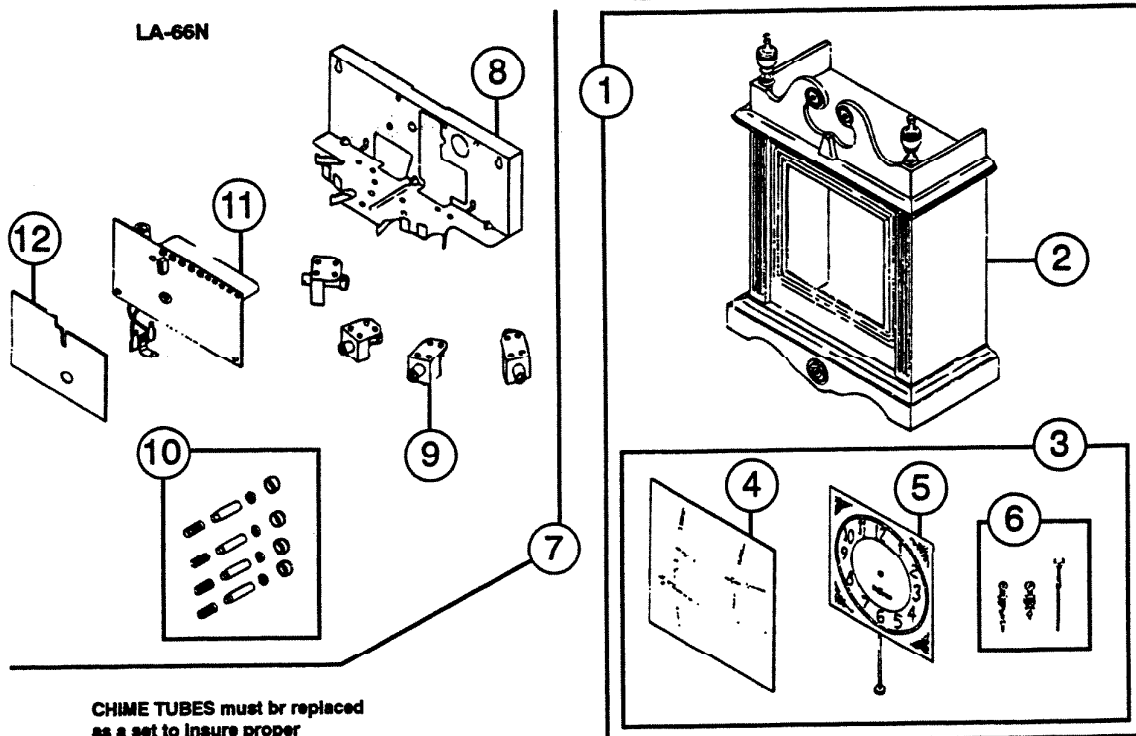
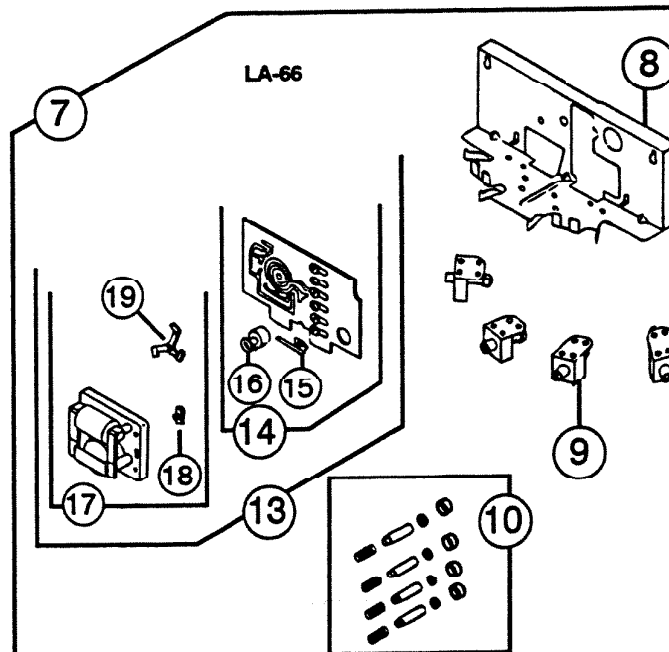
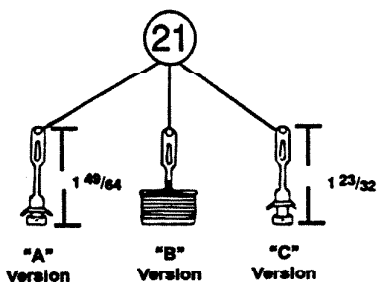
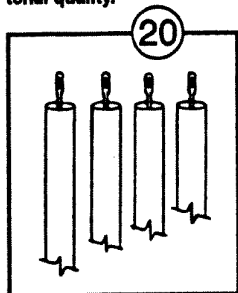


PARTS LIST

EFFECTIVE DATE	MODEL NUMBER	PRODUCT GROUP
OCTOBER 1994	LA-66, LA-66N REVISED	CHIME



CHIME TUBES must be replaced as a set to insure proper tonal quality.



NuTone

NuTone
 Attn: Parts Department
 Madison & Red Bank Rds.
 Cincinnati, OH 45227-1599
 Phone: (513) 527-5426
 Fax: (513) 527-5173

REF.	ORIGINAL PART NO.	*PART DESCRIPTION	MODEL USED ON	CURRENT REPLACEMENT PART NO.	
1	56827	CABINET – Complete (w/Clock Mechanism)	LA-66	56827-000	
2	58450	CABINET ASSEMBLY – Only	LA-66, LA-66N	58450-000	
3	1139A	CLOCK ASSEMBLY – Complete	LA-66, LA-66N	1139A-000	
4	05793	CLOCK CRYSTAL	LA-66, LA-66N	05793-000	
5	56848	CLOCK FACE – Only	Can Use Ref. 3	LA-66, LA-66N	Void - not avail.
6	69586	HAND SET	LA-66, LA-66N	69586-000	
7	64193	CHIME MECHANISM	1236A Will Sub.	LA-66	Void - not avail.
	30720		LA-66N	1236A-000	
8	64183	CHASSIS	LA-66	30705-005	
	30705		LA-66N		
9	08136	POWER UNIT ASSEMBLY – w/Plunger, Spring, Cap	LA-66, LA-66N	08135-000	
10	69581	PLUNGER SET – 4	LA-66, LA-66N	69581-000	
11	30458	TERMINAL P.C. BOARD ASSEMBLY – w/Wiring Dia.	LA-66N	1237A-REB	
12	30623	INFORMATION CARD	LA-66N	1957A-000	
13	69681	P.C. BOARD AND MOTOR ASSEMBLY	LA-66	Void - not avail. 1236A-000 Will Sub.	
14	64194	P.C. TERMINAL BOARD ASSEMBLY	LA-66	Void - not avail. 1236A-000 Will Sub.	
15	65697	STARTING CONTACT	LA-66	65697-051	
16	64185	VOLUME CONTROL	LA-66	64185-000	
17	69688	MOTOR ASSEMBLY	LA-66	Void - not avail.	
18	08724	SLIDE SWITCH ASSEMBLY	LA-66	69543-000	
19	64173	ROTOR ASSEMBLY	LA-66	Void - not avail.	
20	58470	TUBE SET	LA-66, LA-66N	H9855-000	
21	05749	TUBE HANGER SET – 4	"A" Version	LA-66, LA-66N	69533-000
	H9000		"B" Version	LA-66, LA-66N	1216A-000
	H9863		"C" Version	LA-66, LA-66N	1958A-000
--	02747	ENVELOPE ASSEMBLY – (Mtg. Screws)	LA-66, LA-66N	65364-000	

CUSTOMER NOTE:

LA-66 & LA-66N Chimes use transformer
Model 105 T (16 Volt, 15 Watt)

↑

**NOTE: Always order by
current part number**