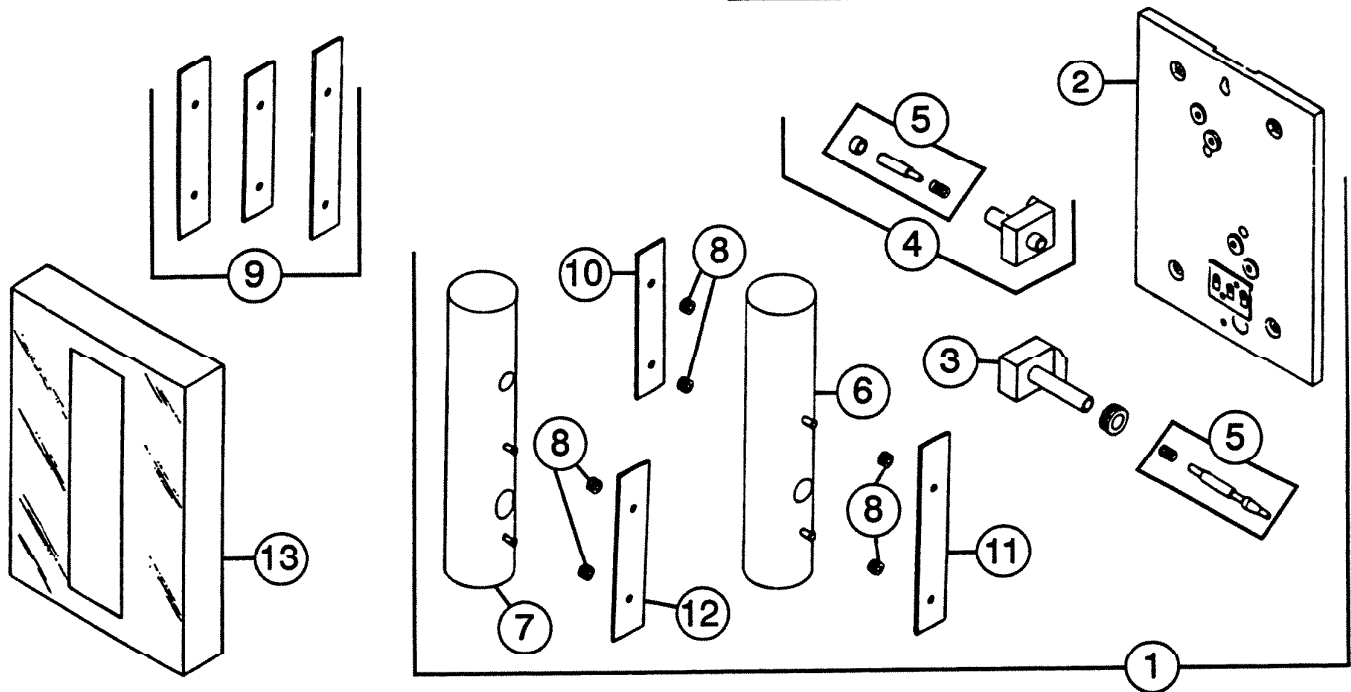


PARTS LIST

EFFECTIVE DATE	MODEL NUMBER	PRODUCT GROUP
AUGUST 1994	LA-35 REVISED	CHIME



REF.	ORIGINAL PART NO.	*PART DESCRIPTION	MODEL USED ON	CURRENT REPLACEMENT PART NO.
1	63851	BASEPLATE ASSEMBLY	LA-35	63851-000
2	5803	BASEPLATE	LA-35	05803-005
3	5847	DOUBLE POWER UNIT/VER	LA-35	05847-000
4	8135	POWER UNIT ASSEMBLY	LA-35	08135-000
5	69634	PLUNGER SET - 1 SINGLE 1 DOUBLE	LA-35	69696-000
6	63857	RESONATOR ASSEMBLY R.H.	LA-35	63857-000
7	63853	RESONATOR ASSEMBLY L.H.	LA-35	63853-000
8	4458	GROMMET SET - 6	LA-35	69691-000
9	3496	REED SET ASSEMBLY WITH GROMMETS	LA-35	03496-000
10	4781	R.H. REED ASSEMBLY - INSIDE	LA-35	03496-000
11	4780	R.H. REED ASSEMBLY - OUTSIDE	LA-35	03496-000
12	3388	L.H. REED ASSEMBLY - INSIDE	LA-35	03496-000
13	63540	COVER ASSEMBLY	LA-35	Void - not avail.
-	2747	ENVELOPE ASSEMBLY (MTG. Screws) Not Shown	LA-35	65364-000

NuTone

NuTone
 Attn: Parts Department
 Madison & Red Bank Rds.
 Cincinnati, OH 45227-1599
 Phone: (513) 527-5426
 Fax: (513) 527-5173

NOTE: Always order by current part number