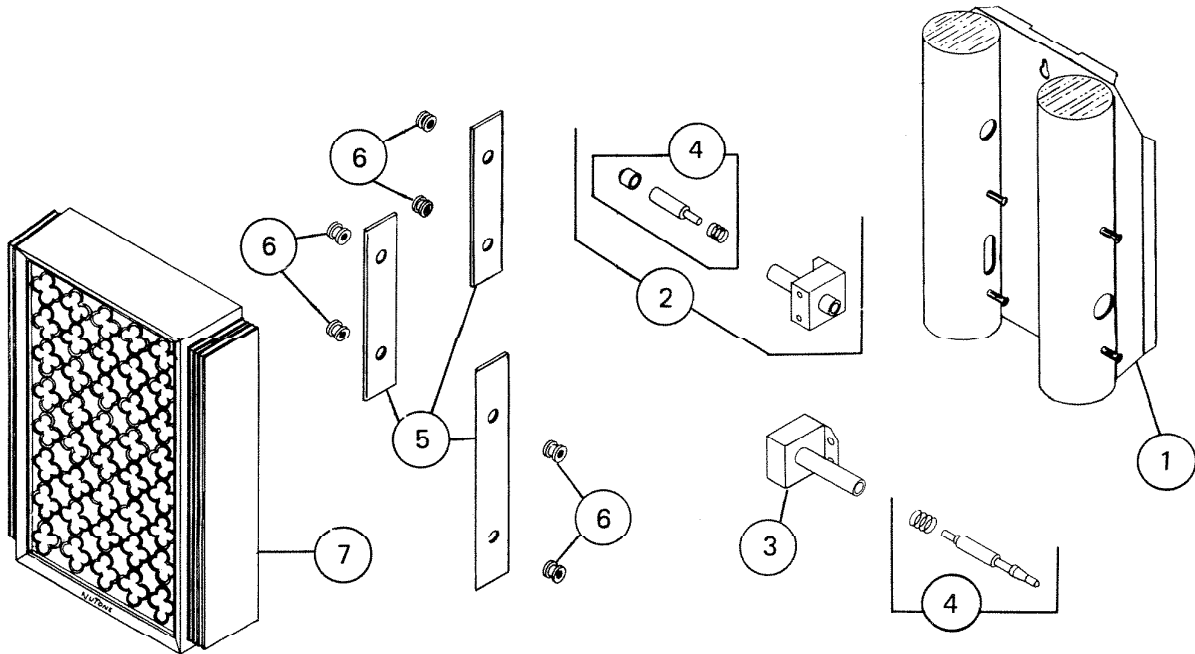


PARTS LIST

| EFFECTIVE DATE | MODEL | PRODUCT GROUP |
|----------------|------------------------|---------------|
| DEC. 1979 | L-31, L-31N REVISED | CHIME |



| REF. | ORIGINAL PART NO. | * PART DESCRIPTION | MODEL USED ON | CURRENT REPLACEMENT PART NO. |
|------|-------------------|-------------------------------------|---------------|------------------------------|
| 1 | 69567 | BASEPLATE W/RESONATOR ASSY | L-31 L-31N | 69686-000 |
| 2 | 8135 | POWER UNIT ASSY W/PLUNGER | L-31 L-31N | 08135-000 |
| 3 | 5847 | DOUBLE POWER UNIT ASSY ONLY | L-31 L-31N | 05847-000 |
| 4 | 69568 | PLUNGER SET 1 SINGLE 1 DOUBLE | L-31 L-31N | 69696-000 |
| 5 | 3387 | REED SET W/GROMMENTS - 3 | L-31 L-31N | 03496-000 |
| 6 | 69569 | GROMMET SET - 6 | L-31 L-31N | 69697-000 |
| 7 | 6291 | COVER ASSY | L-31 | 09705-000 |
| | 6346 | | | 09706-000 |
| | 9705 | | L-31N | 09705-000 |
| | 9706 | | | 09706-000 |

NuTone

↑
NOTE: Always order by
current part number.