

IM-4406 Master unit

Front Panel Part#
 White 0840B-000
 Biscuit 0841B-000
 Black 0842B-000



IM-4406 Master unit-displaying control access.



CD Door Part#
 Biscuit 0850B-000
 Black 0851B-000
 White 0849B-000

Left Door Part#
 Biscuit 0847B-000
 Black 0848B-000
 White 0846B-000

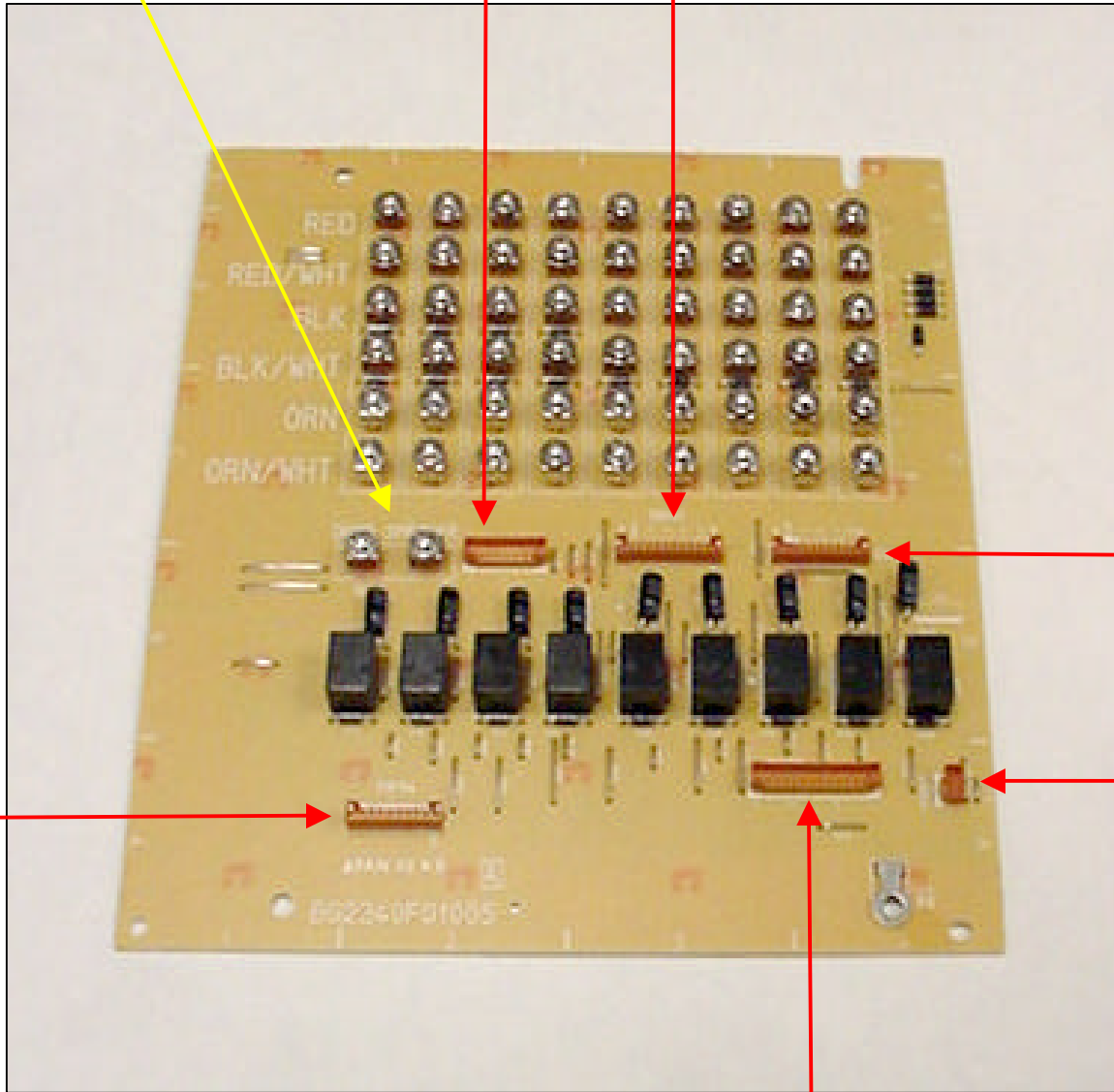
Right Door Part#
 Biscuit 0844B-000
 Black 0845B-000
 White 0843B-000

Terminal PC Bd. Part #0825B-000

Door speaker terminals

CN106

CN101

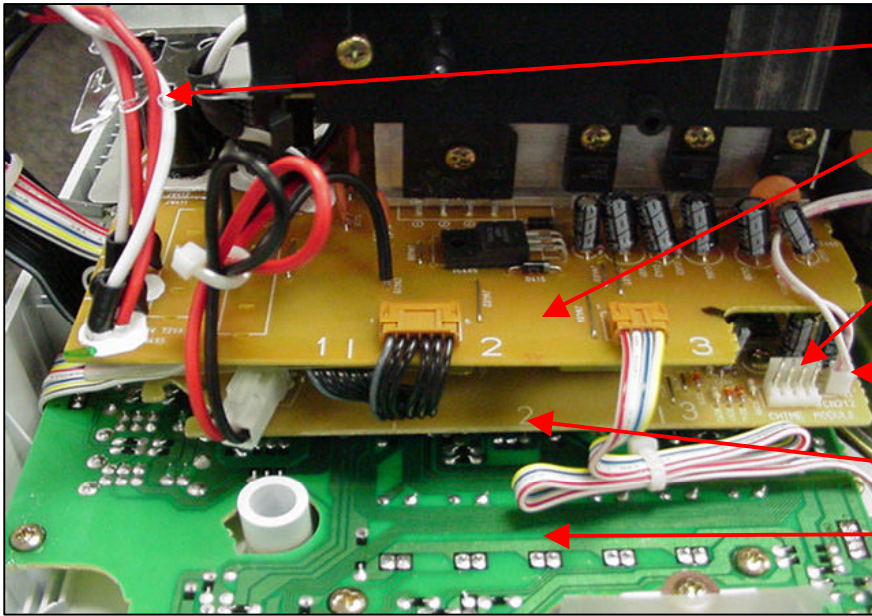


CN116

CN104

CN111

CN102



Power wires- hook to Transformer.

Power Supply and Amplifier PC Bd. Part# 0567B-000

Chime connector

Speaker wire

Main pc bd ass'y Part# 0551B-000

Control pc bd. Part# 0567B-000

This is left side of unit. The two pairs of red&white wires are power hook-up wires. They hook up to the two transformers.

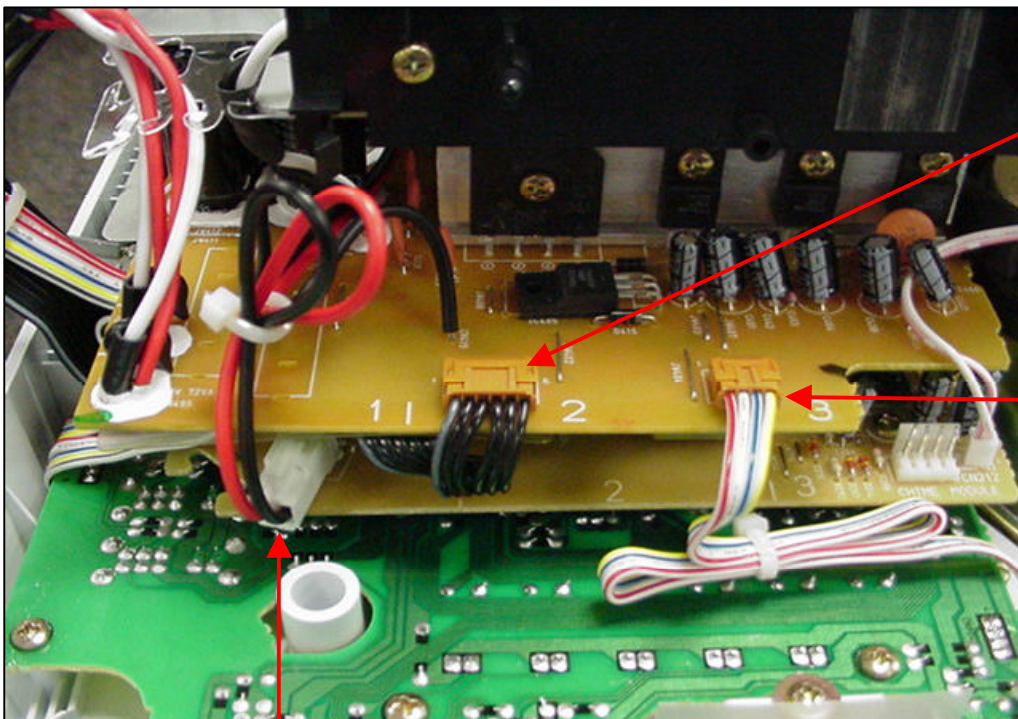
The red & black wires with the wire tie around them carries audio. This connector is labeled CN410. Its soldered into the power board, plugs into the main pc bd. where its labled CN221.

The black ribbon wire is labled CN408 on the power bd where it plugs in. It carries power to the main pc bd where it is labled CN206 and soldered in.

The multi-colored ribbon cable is labled CN407 on power board where it plugs in. It carries power to the control pc bd where it is labled CN804 and is soldered.

The white 4 pin connector is for the chime module.

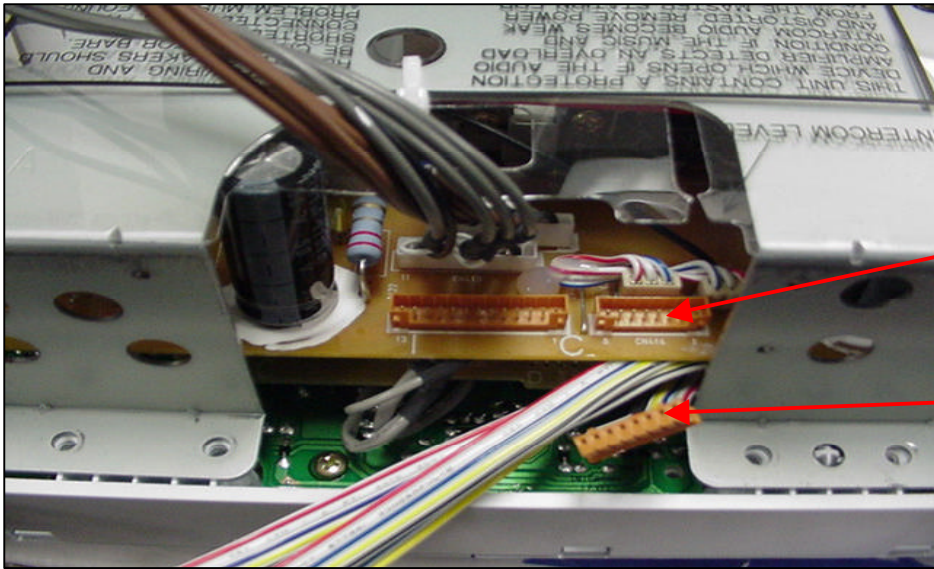
This information applies to the first three pictures on this page.



Carries power to the main pc bd. Connector CN408

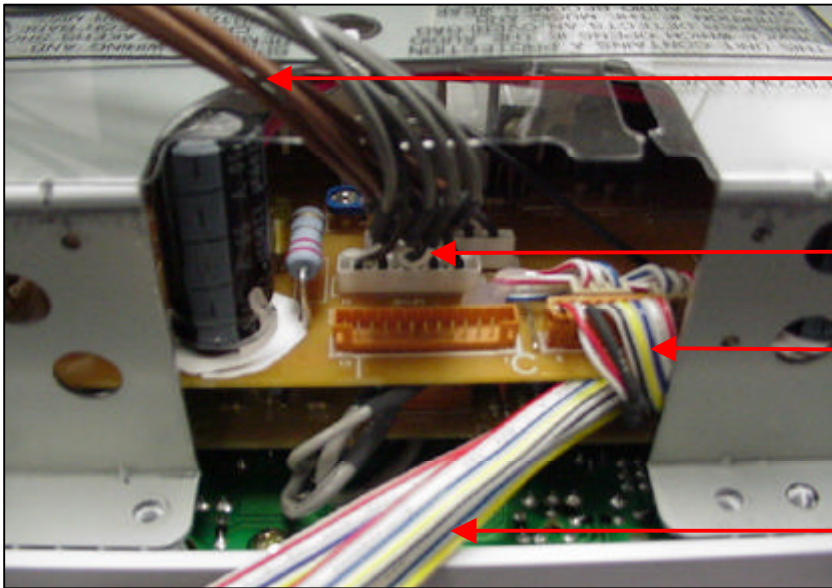
Carries power to the control pc bd. Connector CN407

Carries audio



If not plugged in and seated properly you lose audio.

Plugs into CN414 on power bd.



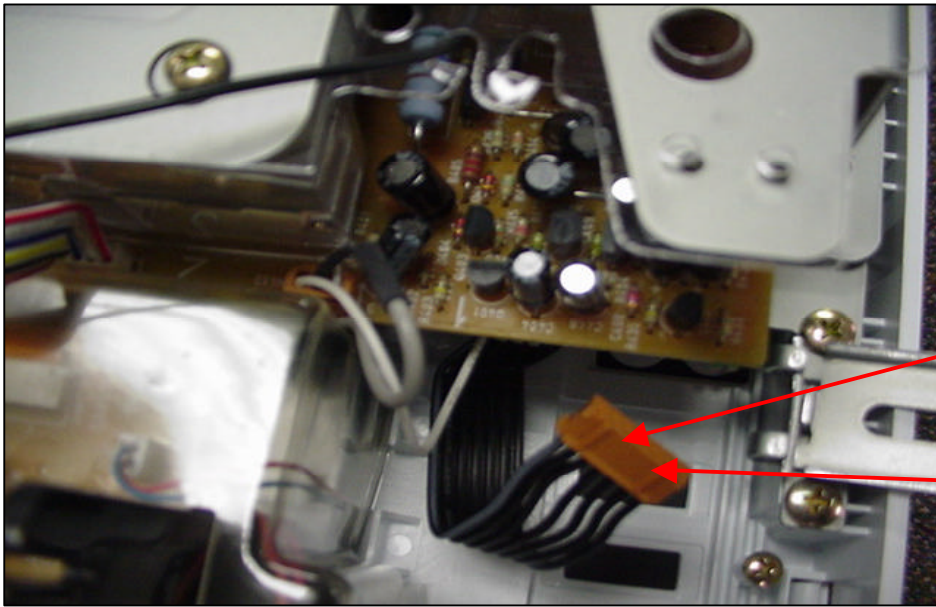
Brown wires Goes to CN101 on terminal bd

Gray wires go to CN116 on terminal bd.

IA-440 use only

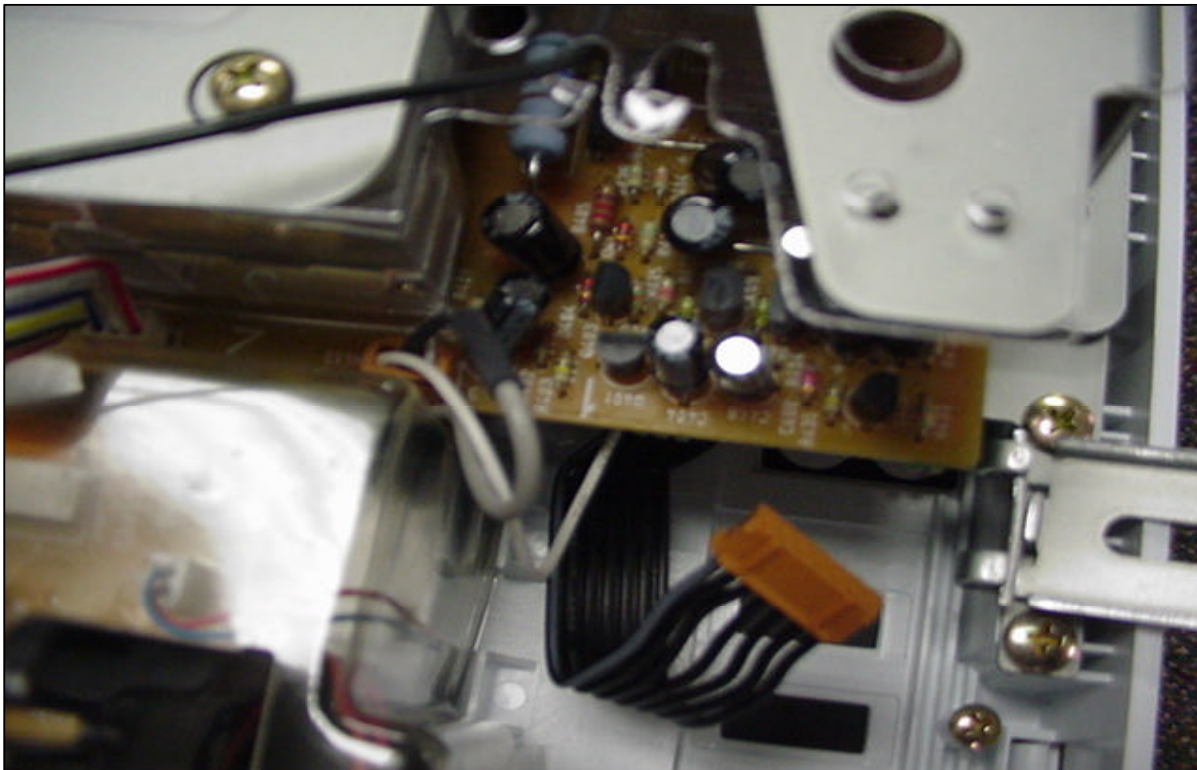
Goes to CN102 on terminal Bd.

Unit is laying face-down. This is the bottom of unit.
 The connector with nothing plugged in is for the expansion kit. It is labeled CN411.
 The multi-colored ribbon cable next to the empty connector is labeled CN414.
 The other end of this cable goes to the main pc bd and is labeled CN207. It is soldered at that point. There are two cable ass'y located beyond the empty one, they have connectors which are soldered into the power bd. The first of the two is labeled CN413 and will consist of gray wires in early versions, later changed to brown. It is an 11 pin connector. The other cable ass'y is labeled CN412 and consists of brown wires. It is a 12 pin connector. Both of these cables go to the terminal pc bd. CN413 plugs into CN116 and CN412 plugs into CN101 on terminal pc bd.



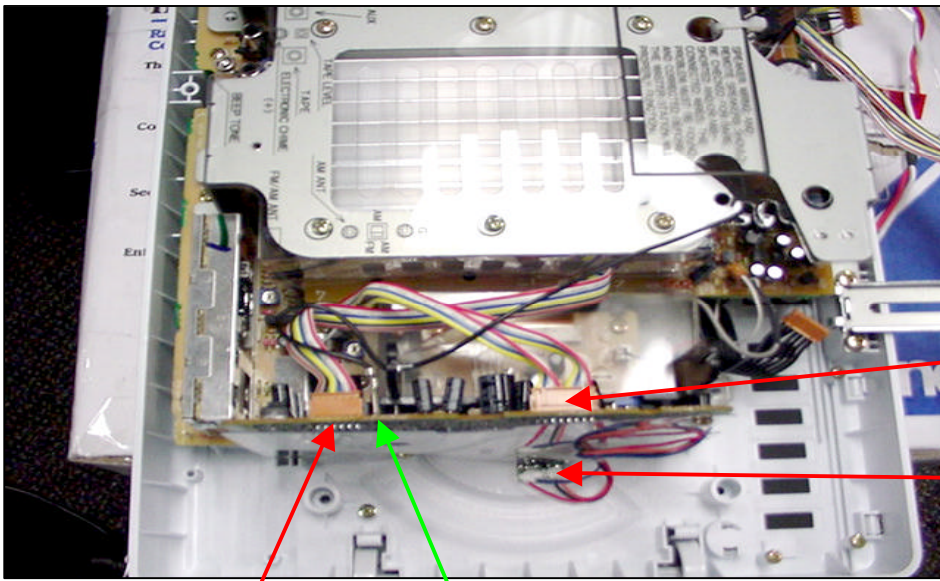
Used with the
IA-440 expansion
kit

Plugs into CN1101
on IA440 control
bd.



Unit is laying face down. Shown is the bottom right of unit.
The black cable shown is used with the expansion kit.
It plugs into the expansion control board at connector location CN1101.
The other end is soldered into the control pc bd of the IM4406 and is labeled CN809.

CD player Part# 0855B-000

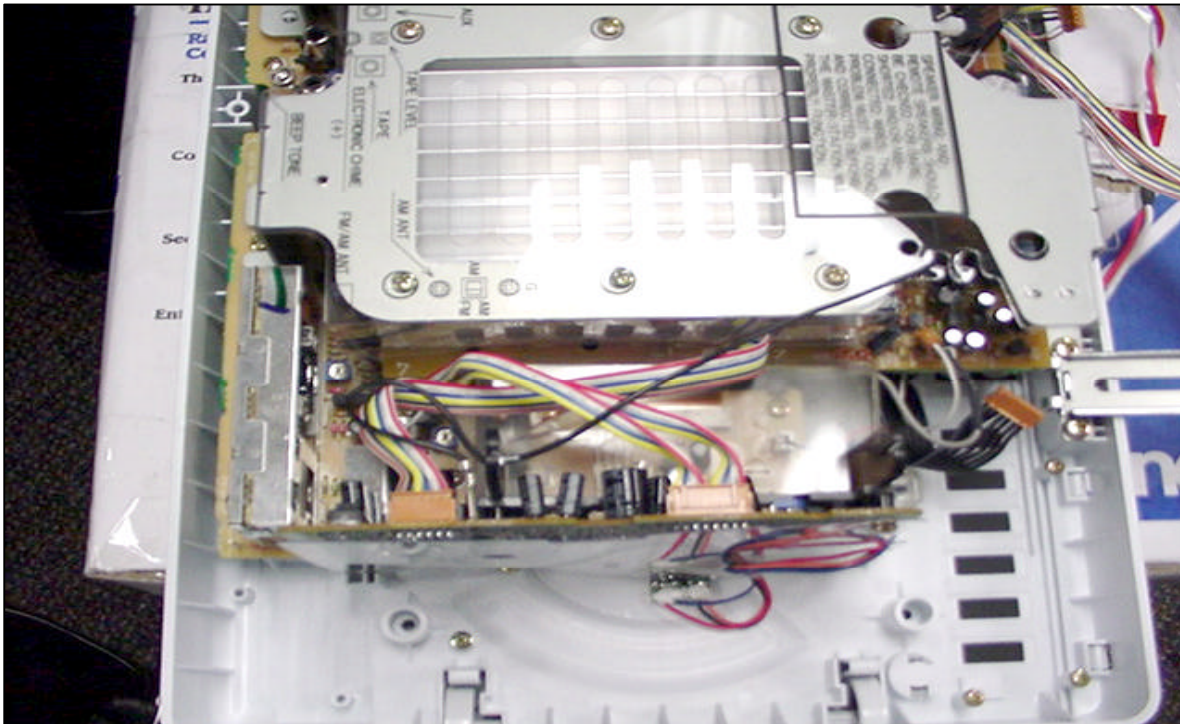


Carries operating voltage to CD

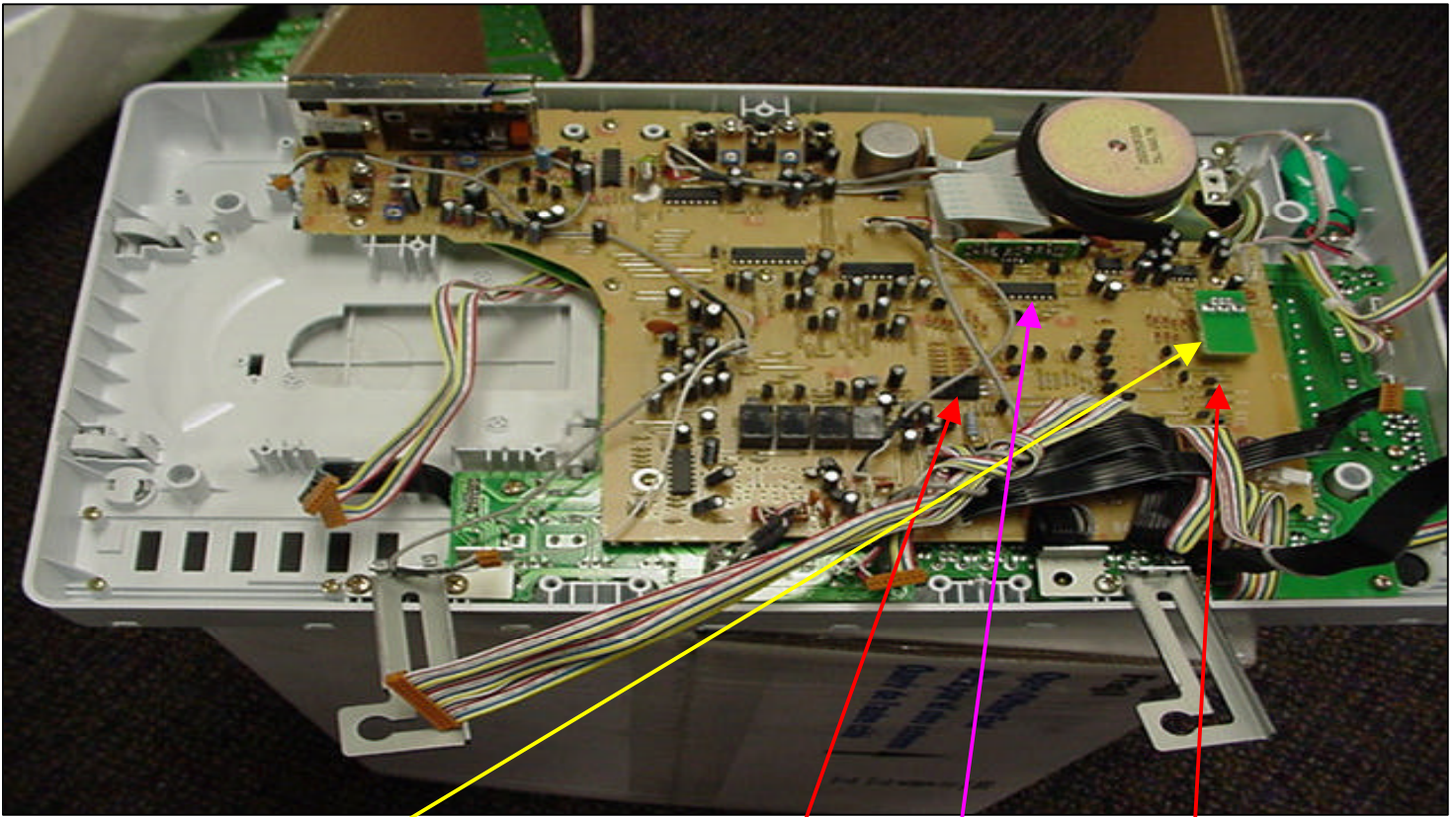
Ground wire

Carries info to and from CD player

Senses if disc is loaded



You can also refer to the description above for this picture. This one does show a bit more of the CD player. The ribbon cable on the right carries control information. The cable on the left carries power to the CD player. The black wire is a ground wire.



No master audio- Check for broken connections on volume control

No I-com- check this transistor & the surrounding transistors. Q261, Q262, Q263

If you have I-com control functions but no I-com audio check IC215.

If you have no I-com functions or audio at remote locations, this series of transistors is most likely at fault Q224 is for remote #1, Q225 is for remote #2 and so on.

PARTS LIST

IM-4406 (WH, L, BL) INTERCOM

2002

2	0825 B	TERMINAL BOARD	0825B-000
3	0567B	CONTROL BOARD	0567B-000
4	0617B	POWER PC BOARD	0567B-000
5	0862B	MASTER SPEAKER ASSY	0862B-000
6	0855B	CD ASSY COMPLETE	0855B-000
7	0852B	KNOB-VOLUME CONTROL	0852B-000
8	0853B	LEFT-HINGE BRKT ASSY	0853B-000
9	0854B	RIGHT-HINGE BRKT ASSY	0854B-000
10	0856B	EXPANSION PC BOARD ASSY	0856B-000
11	0858A	BATTERY	0858A-000
12	0840B	FRONT PANEL ASSY (WH)	0840B-000
13	0841B	FRONT PANEL ASSY (L)	0841B-000
14	0842B	FRONT PANEL ASSY (BL)	0842B-000
15	0843 B	RH DOOR (WH)	0843B-000
16	0844B	RH DOOR (L)	0844B-000
17	0845B	RH DOOR (BL)	0845B-000
18	0846B	LH DOOR (WH)	0846B-000
19	0847B	LH DOOR (L)	0847B-000
20	0848B	LH DOOR (BL)	0848B-000
21	0849B	CD DOOR (WH)	0849B-000
22	0850B	CD DOOR (L)	0850B-000
23	0851 B	CD DOOR (BL)	0851B-000
24	0858B	HARDWARE BAG ASSY (BL)	0858B-000
25	0622B	HARDWARE BAG ASSY (WH, L)	0622B-000
26	0857B	EXPANSION TERMINAL PC BOARD ASSY	0857B-000
27	0859B	EXPANSION INLAY	0859B-000
28	0860B	EXPANSION HARDWARE BAG ASSY	0860B-000