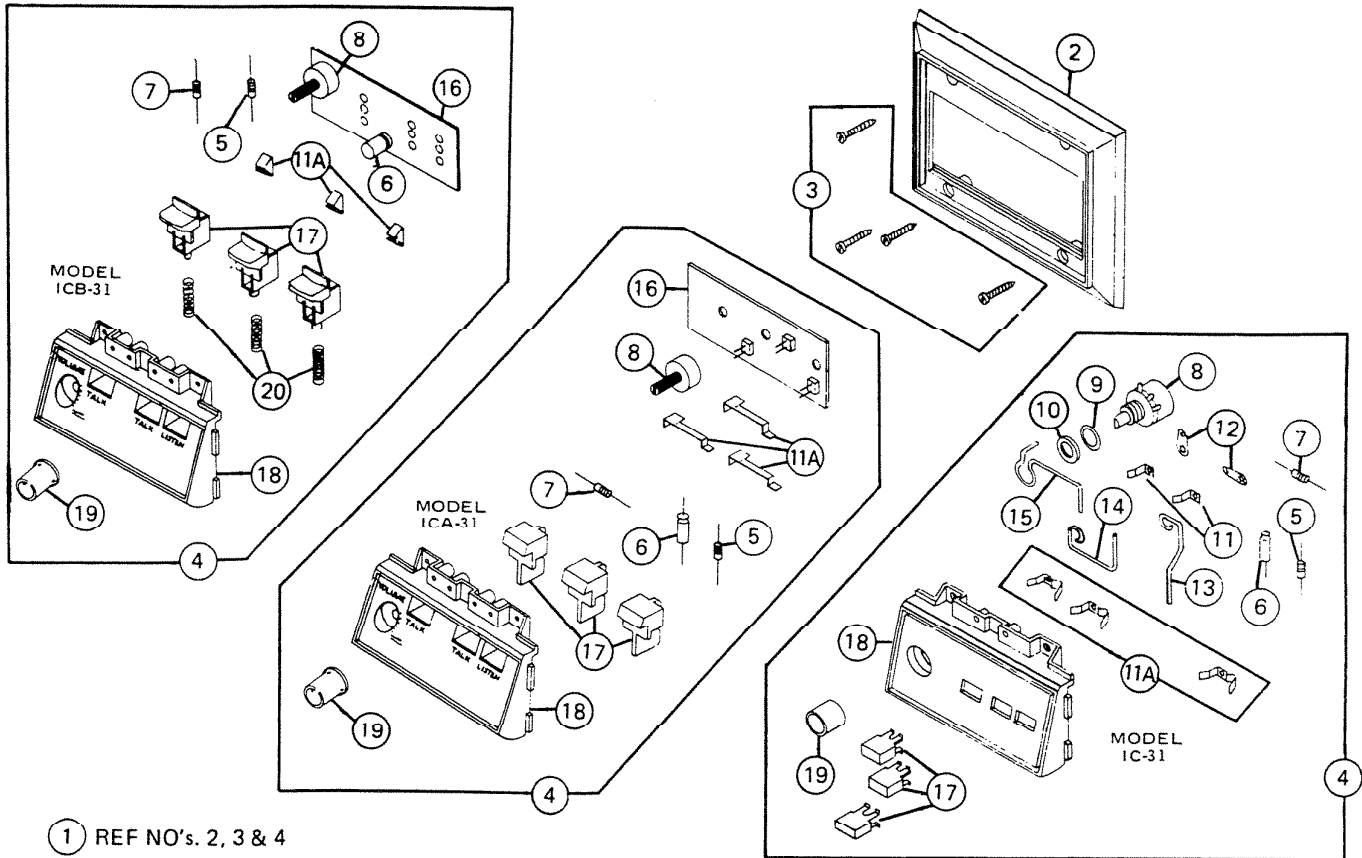


PARTS LIST

EFFECTIVE DATE	MODEL	PRODUCT GROUP
APRIL 1980	IC-31, ICA-31 REVISED ICB-31, NEW	ELEC- TRONICS



① REF NO's. 2, 3 & 4

REF.	ORIGINAL PART NO.	* PART DESCRIPTION	MODEL USED ON	CURRENT REPLACEMENT PART NO.
1	-----	REMOTE CONTROL COMP. REF. NO'S. 2, 3, & 4. NOT A PARTS DEPT. STOCK ITEM	IC-31	-----
	-----		ICA-31	
	-----		ICB-31	
2	38571	BEZEL	IC-31 ICA-31 ICB-31	38571-000
3	41579	ENVELOPE ASSEMBLY (MTG. SCREWS)	IC-31	41501-000
	41501		ICA-31 ICB-31	
4	69803	INSERT ASSEMBLY	IC-31	1571A-000
	1492A		ICA-31	
	1571A		ICB-31	
(PLEASE SEE OTHER SIDE)				

Ni Tone

↑
**NOTE: Always order by
current part number.**

REF.	ORIGINAL PART NO.	* PART DESCRIPTION	MODEL USED ON	CURRENT REPLACEMENT PART NO.	
5	33101-102	RESISTOR	IC-31	33101-102	
	33082-102		ICA-31 ICB-31	33082-102	
6	35068-104	CAPACITOR	IC-31	35068-104	
	35091-115		ICA-31 ICB-31	35091-115	
7	33101-822	RESISTOR	IC-31	33101-822	
	33082-822		ICA-31 ICB-31	33082-822	
8	34063	POTENTIOMETER	IC-31	34063-000	
	34059		ICA-31 ICB-31	34059-000	
9	31403	WASHER (FISH PAPER)	IC-31	31403-000	
10	25056	WASHER	IC-31	25056-003	
11	39400-051	CONTACT	IC-31	1538A-000	
	39432-051				
11A	39401-051	CONTACT	IC-31	1539A-000	
	39658		ICA-31	1546A-000	
	39715		ICB-31	1075A-000	
12	39389	LUG	IC-31	1547A-000	
13	39435	CONTACT WIRE	IC-31	39435-051	
14	38570	CONTACT WIRE	IC-31	38570-051	
15	39433	CONTACT WIRE	IC 31	39433-051	
16	41783	P.C. BOARD	ICA-31	1571A-000	
	42287		ICB 31	42287-000	
17	39343	PUSHBUTTON	SET	IC-31	1548A-000
	39587			ICA 31	1549A-000
	39713		ONE	ICB-31	39713-000
18	38559	CONTROL INSERT ONLY	IC 31	38559-000	
	38754		ICA-31	38754-000	
	38942		ICB-31	38942-000	
19	39344	KNOB	IC-31	39344-000	
	39557		ICA-31 ICB-31	39557-000	
20	39746	SPRING (1) – 3 REQUIRED	ICB-31	39746-000	