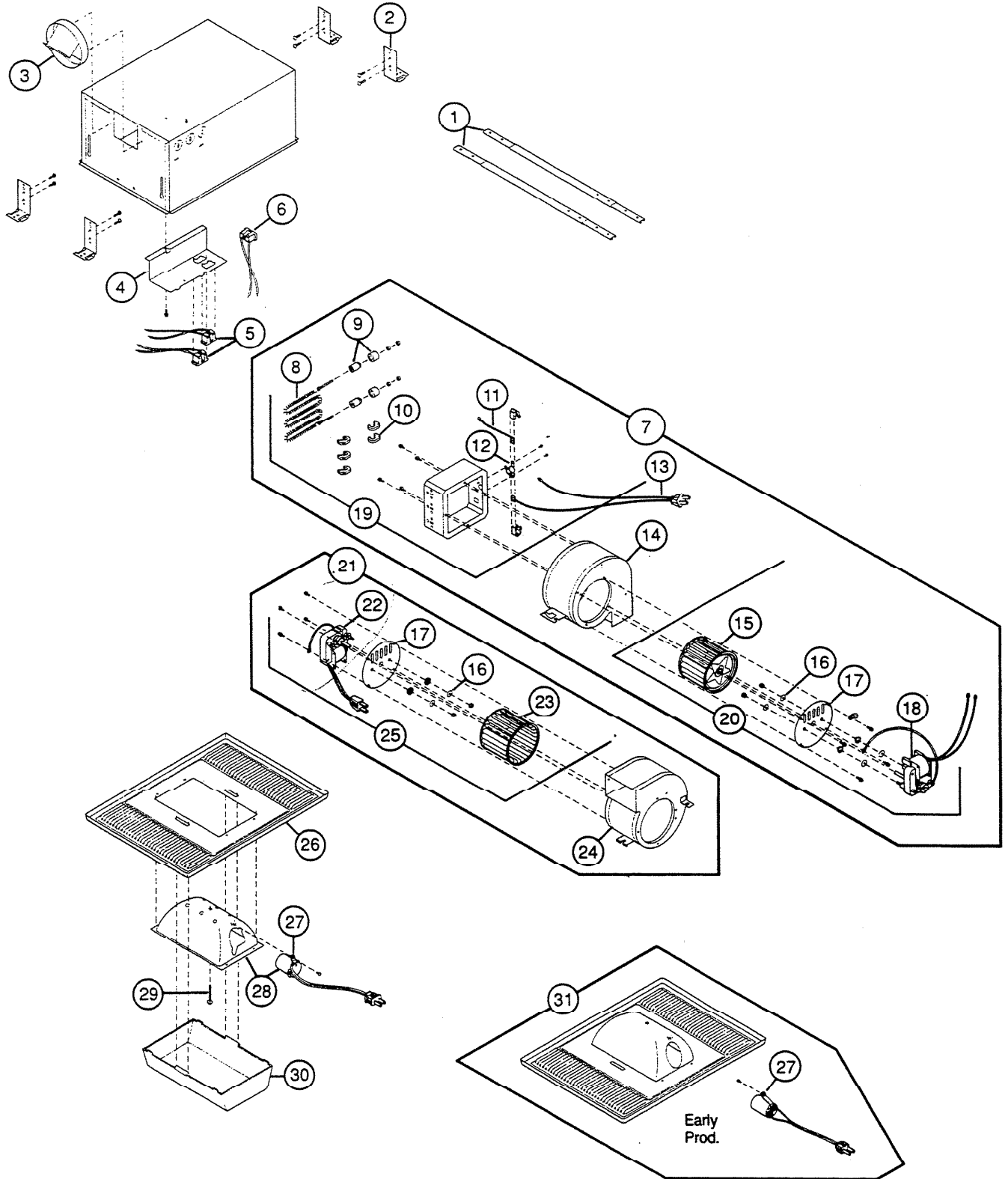


# PARTS LIST

EFFECTIVE DATE	MODEL	PRODUCT GROUP
APRIL 1992	H-965 REVISED	HEATER



REF.	ORIGINAL PART NO.	*PART DESCRIPTION	CURRENT REPLACEMENT PART NO.
1	13306	HANGER ROD—Set of (2)	13306-000
2	53196	CEILING MOUNTING BRACKET ASSY.—Set of (4) W/Screws	53194-000
3	11390	DUCT ASSY. W/Louver	11390-000
4	65696	JUNCTION BOX COVER	65696-000
5	66204	PLUG RECEPTACLE—Vent & Light—Black (1) 2 Required	66204-000
6	56721	PLUG RECEPTACLE—Heat—White	56721-000
7	69297	"B" UNIT COMPLETE—Heat	69297-000
8	27593	HEAT ELEMENT	58120-000
9	69314	INSULATOR BUSHING SET (1)—2 Required	69314-000
10	27546	ELEMENT SUPPORT (1)—5 Required	27546-000
11	19462	WIRE ASSEMBLY—Heat Box Jumper	19462-W18
12	27548	THERMAL PROTECTOR	27548-000
13	63680	WHITE PLUG ASSEMBLY	63680-000
14	66578	BLOWER HOUSING ASSEMBLY—Heat	66578-005
15	66583	BLOWER WHEEL—Heat—3¾" Dia. x 2"	66583-000
16	69289	GROMMET KIT—(2) Grommets, (2) Eyelets, (4) Washers	69289-000
17	63673	MOTOR MOUNT PLATE ASSY. W/Grommets & Eyelets	57766-000
18	66582	MOTOR—Heat	57769-000
19	63679	HEAT BOX ASSEMBLY—WO/White Plug Assembly	27544-000
20	69335	POWER UNIT—Motor, Plate, Blower Wheel—HEAT	69335-000
21	69291	"B" UNIT COMPLETE—Vent	69291-000
22	63675	MOTOR—Vent	57768-000
23	66142	BLOWER WHEEL—Vent—3¾" Dia. x 2½"	66142-000
24	63671	BLOWER HOUSING—Vent	63671-005
25	69357	POWER UNIT—Motor, Plate, Blower Wheel—VENT	69357-000
26	57765	GRILLE	57765-206
27	53717	LAMP SOCKET	K4245-000
	23435		Early Prod. 23435-000
28	0458A	REFLECTOR, SOCKET ASSEMBLY	0458A-000
29	52863	GRILLE SCREW—#14—10 x 1¾ PH. PAN "A"	52863-015
30	65776	LENS	65776-000
31	66850	GRILLE, REFLECTOR, SOCKET ASSY.—Early Prod.	0454A-000

NOTE: Always order by current part number.