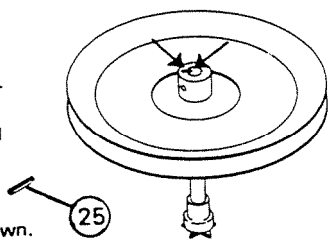
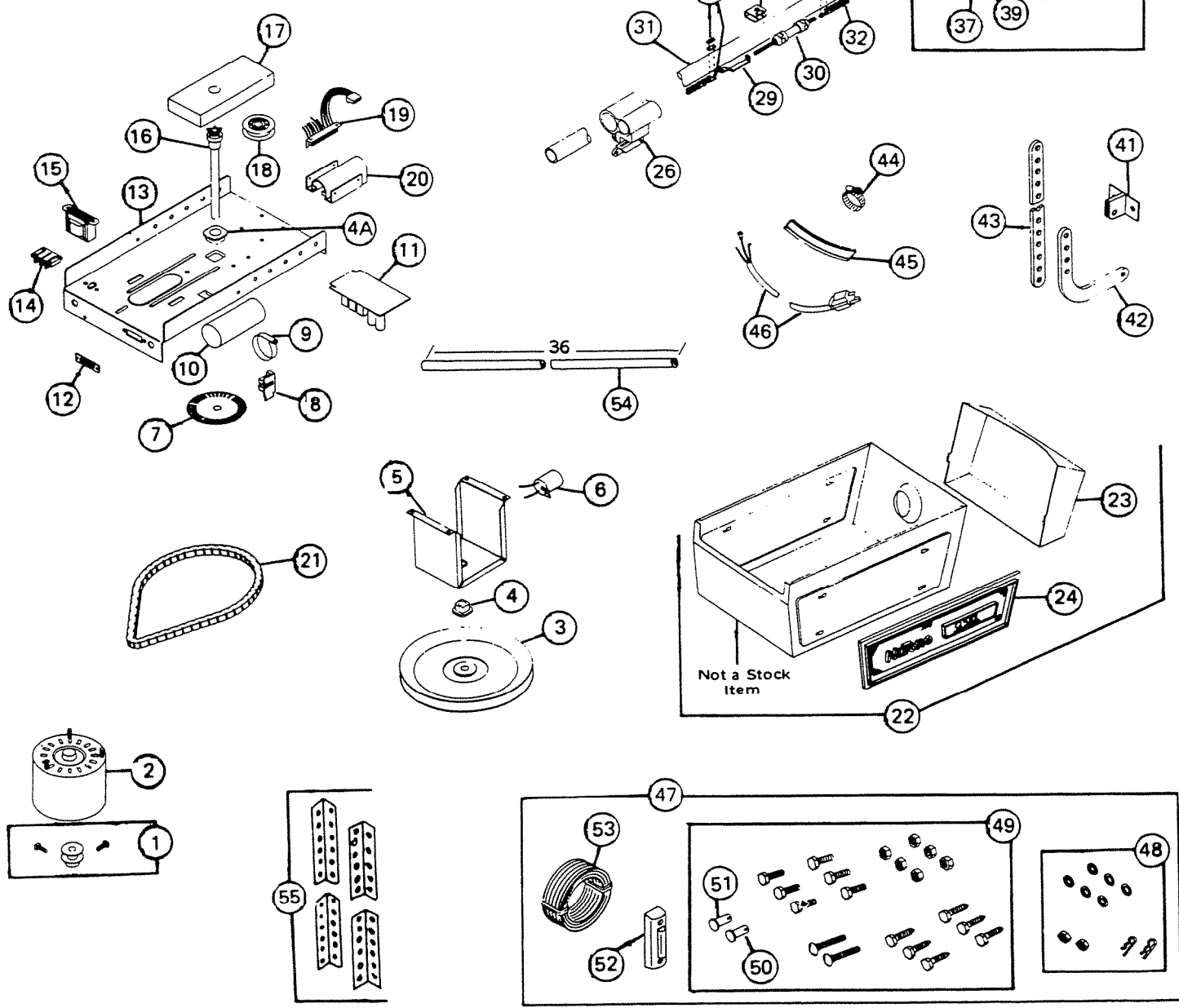


# PARTS LIST

EFFECTIVE DATE	MODEL	PRODUCT GROUP
FEBRUARY 1980	G-582, G-582S REVISED GA-582, GA-582S NEW	G.D.O.

**KIT PART NO. 1909A-000**  
**NOTE:** When it is necessary to replace the pulley or drive shaft, due to the necessity of predrilling the shaft & pulley for the spring pin they must be replaced as a matched pair. Please order drive shaft & pulley kit part no. 1909A-000. Note markings on pulley & drive shaft. Align marks and insert spring pin as shown.

EF.	ORIGINAL PART NO.	PART DESCRIPTION		MODEL USED ON	CURRENT REPLACEMENT PART NO.
1	51263	MOTOR PULLEY		G-582 GA-582 G-582S GA-582S	51263-015
2	67924	MOTOR		G-582 GA-582	67924-000
	67925			G-582S GA-582S	67925-000
3	51654	9" PULLEY—REPLACEMENT KIT		G-582 GA-582 G-582S GA-582S	1909A-000
4	51463	BEARING	TOP	G-582 GA-582 G-582S GA-582S	51463-000
4A	51083		BOTTOM	G-582 GA-582 G-582S GA-582S	51083-000
5	51462	MAIN SUPPORT		G-582 GA-582 G-582S GA-582S	51462-000
6	51464	LAMP SOCKET		G-582 GA-582 G-582S GA-582S	51464-000
7	1892A	DISC ASSY		G-582 GA-582 G-582S GA-582S	1892A-000
8	42243	P.C. BOARD		G-582 G-582S	42243-000
	42476			GA-582 GA-582S	42476-000
9	50056	CAPACITOR CLAMP		G-582 GA-582 G-582S GA-582S	50056-000
10	50055	CAPACITOR	53-64 ufd	G-582 GA-582	50055-000
	50593		36-43 ufd	G-582S GA-582S	50593-000
11	42240	P.C. BOARD		G-582	42240-000
	42426			GA-582	42426-000
	42241			G-582S	42241-000
	42428			GA-582S	42428-000
12	51421	TERMINAL STRIP		G-582 GA-582 G-582S GA-582S	51421-000
(CONTINUED ON NEXT PAGE)					

REF.	ORIGINAL PART NO.	PART DESCRIPTION	MODEL USED ON	CURRENT REPLACEMENT PART NO.
13	51460	BASE ONLY	G-582 GA-582 G-582S GA-582S	51460-000
14	51422	TERMINAL BLOCK	G-582 GA-582 G-582S GA-582S	51422-000
15	42244	TRANSFORMER ASSY	G-582 GA-582 G-582S GA-582S	42244-000
16	51651	DRIVE SHAFT — REPLACEMENT KIT	G-582 GA-582 G-582S GA-582S	1909A-000
17	51524	CHAIN GUARD	G-582 GA-582 G-582S GA-582S	51524-000
18	51465	PULLEY — CHAIN	G-582 GA-582 G-582S GA-582S	51465-000
19	51593	CONNECTOR & MTG BRKT ASSY	G-582 G-582S	51593-000
	42434		GA-582 GA-582S	42434-000
20	51478	TUBE MTG BRACKET	G-582 GA-582 G-582S GA-582S	51478-000
21	1898A	"V" BELT	G-582 GA-582 G-582S GA-582S	50051-000
22	51486	COVER COMP W/LENS	G-582	51486-000
	51493		G-582S	51493-000
	51853		GA-582	51853-000
	51854		GA-582S	51854-000
23	67759	LENS	G-582 GA-582 G-582S GA-582S	67759-000
24	51517	NAME PANEL	G-582	51517-000
	51518		G-582S	51518-000
	51850		GA-582	51850-000
	51851		GA-582S	51851-000
25	51477	SPRING PIN	G-582 GA-582	51598-000
	51598		G-582S GA-582S	
(CONTINUED ON NEXT PAGE)				

REF.	ORIGINAL PART NO.	PART DESCRIPTION	MODEL USED ON	CURRENT REPLACEMENT PART NO.
26	51235	TROLLEY ASSY	G-582 GA-582 G-582S GA-582S	51235-000
27	69486	CHAIN COUPLING LINKS	G-582 GA-582 G-582S GA-582S	69486-000
28	51479	ROLLER MTG BRACKET	G-582 GA-582 G-582S GA-582S	51479-000
29	51232	CONNECTOR	G-582 GA-582 G-582S GA-582S	51232-020
30	51240	TURNBUCKLE	G-582 GA-582 G-582S GA-582S	51240-000
31	1046A	TUBING SECTION KIT (3—SECTION TUBE) (2—CONNECTORS)	G-582 GA-582 G-582S GA-582S	1046A-000
32	64910	CHAIN	G-582 GA-582 G-582S GA-582S	64910-000
33	51627	MOUNTING BRACKET ASSY	G-582 GA-582 G-582S GA-582S	51627-000
34	51244	MOUNTING BRACKET	G-582 GA-582 G-582S GA-582S	51244-000
35	51246	PIN — PULLEY	G-582 GA-582 G-582S GA-582S	51246-020
36	50103	PIN	G-582 GA-582 G-582S GA-582S	50103-015
37	50106	CLIP	G-582 GA-582 G-582S GA-582S	50106-015
38	51245	PULLEY W/BEARING	G-582 GA-582 G-582S GA-582S	51245-000
(CONTINUED ON NEXT PAGE)				

EF.	ORIGINAL PART NO.	PART DESCRIPTION	MODEL USED ON	CURRENT REPLACEMENT PART NO.
39	51260	BEARING	G-582 GA-582 G-582S GA-582S	51260-000
40	50573	BRACKET HANGER	G-582 GA-582 G-582S GA-582S	50573-000
41	50574	BRACKET — DOOR MTG	G-582 GA-582 G-582S GA-582S	50574-000
42	50096	ARM CURVED	G-582 GA-582 G-582S GA-582S	50096-005
43	50095	ARM STRAIGHT	20"	G-582 GA-582 50095-005
	50201		48"	G-582S GA-582S 50201-005
44	51234	HOSE CLAMP	G-582 GA-582 G-582S GA-582S	51234-000
45	51233	EXTRUSION CHANNEL (1)	G-582 GA-582 G-582S GA-582S	51233-000
46	50006	CORD ASSY	G-582 GA-582 G-582S GA-582S	50006-000
47	51488	HARDWARE COMP REF. NO'S. 40, 41, 42, 44, 45, 48, 49, 50, 51, 52, 53, & 54	G-582	51488-000
	51495		G-582S	51495-000
	51737		GA-582	51737-000
	51743		GA-582S	51743-000
48	50639	ENVELOPE ASSY LOCKWASHER, CLIP—PIN, NUTS	G-582 GA-582 G-582S GA-582S	50639-000
49	51626	ENVELOPE ASSY 6—LAG BOLTS 5/16" - 9 x 1 1/2" 6—NUTS 5/16 - 18 HEX 6—BOLTS NO. 18 - 5/16 x 1" 2—CARRIAGE BOLT 1/4 - 20 x 1 3/4" 1—PIN 3/8" x 29/32 1—PIN 3/8" x 23/32	G-582 GA-582 G-582S GA-582S	51626-000
50	50104	PIN 3/8 x 29/32	G-582 GA-582 G-582S GA-582S	50104-015
(CONTINUED ON NEXT PAGE)				

EF.	ORIGINAL PART NO.	PART DESCRIPTION	MODEL USED ON	CURRENT REPLACEMENT PART NO.
51	50105	PIN 3/8 x 23/32	G-582 GA-582 G-582S GA-582S	50105-015
52	05120-900	PUSHBUTTON	G-582 GA-582 G-582S GA-582S	05120-900
53	50138	WIRE—2 COND	G-582 GA-582 G-582S GA-582S	50138-000
54	50109	ROPE 36"	G-582 GA-582 G-582S GA-582S	50109-000
55	50204	HANGER STRAP	G-582 GA-582 G-582S GA-582S	50204-000