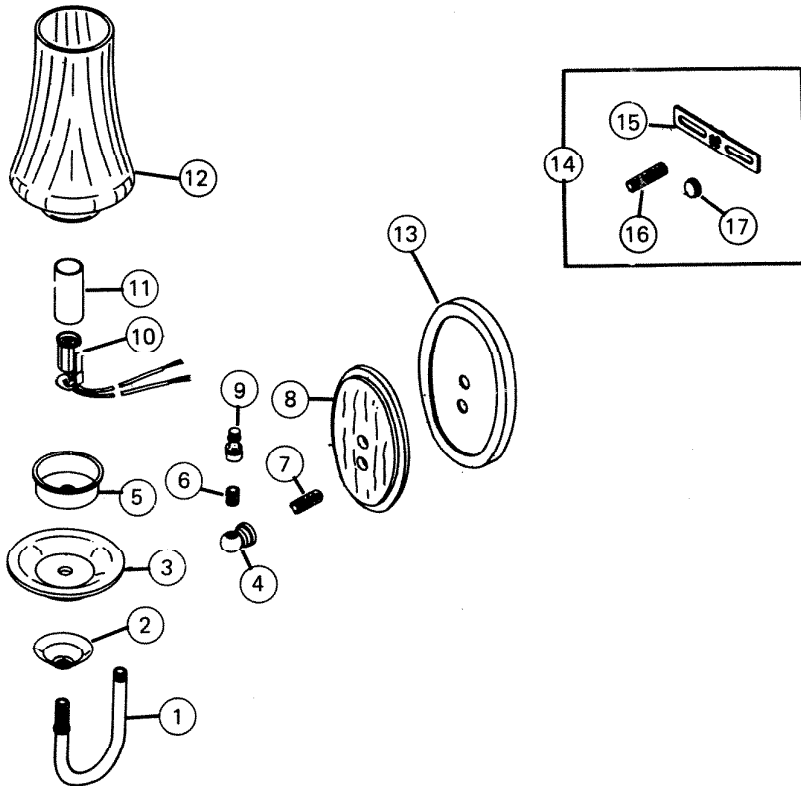


PARTS LIST

EFFECTIVE DATE	MODEL	PRODUCT GROUP
APRIL 1985	DL-568 NEW	BATH CABINET



REF.	ORIGINAL PART NO.	* PART DESCRIPTION	MODEL USED ON	CURRENT REPLACEMENT PART NO.
1	57477	ARM PIPE	DL-568	57477-H27
2	57478	DECORATIVE CHECK RING	DL-568	57478-H27
3	57479	WOOD BOBESCHES (DARK OAK)	DL-568	57479-A12
4	57431	ARM BACK	DL-568	57431-H27
5	57480	GLASS HOLDER	DL-568	57480-H27
6	L2317	NIPPLE - 1/8 IPS X 1/2"	DL-568	L2317-015
7	L6580	NIPPLE - 1/8 IPS X 1"	DL-568	L6580-015
8	57440	WOOD INLAY (DARK OAK)	DL-568	57440-A12
9	57432	FINIAL	DL-568	57432-H27
10	57445	CANDELABRA HOLDER	DL-568	57445-000
11	L6613	CANDLE STICK	DL-568	L6613-000

NuTone

(PLEASE SEE OTHER SIDE)

NOTE: Always order by current part number.

REF	ORIGINAL PART NO.	* PART DESCRIPTION	MODEL USED ON	CURRENT REPLACEMENT PART NO.
12	57481	GLASS CHIMNEY	DL-568	57481-000
13	57439	OVAL BACKPLATE	DL-568	57439-H27
14	57422	HARDWARE ASSEMBLY	DL-568	57422-000
15	L2406	BAR STRAP - 3 7/8"	DL-568	L2406-000
16	57425	NIPPLE - 1/8 IPS X 1 1/2	DL-568	57425-015
17	57426	BRACKET CAP	DL-568	57426-027