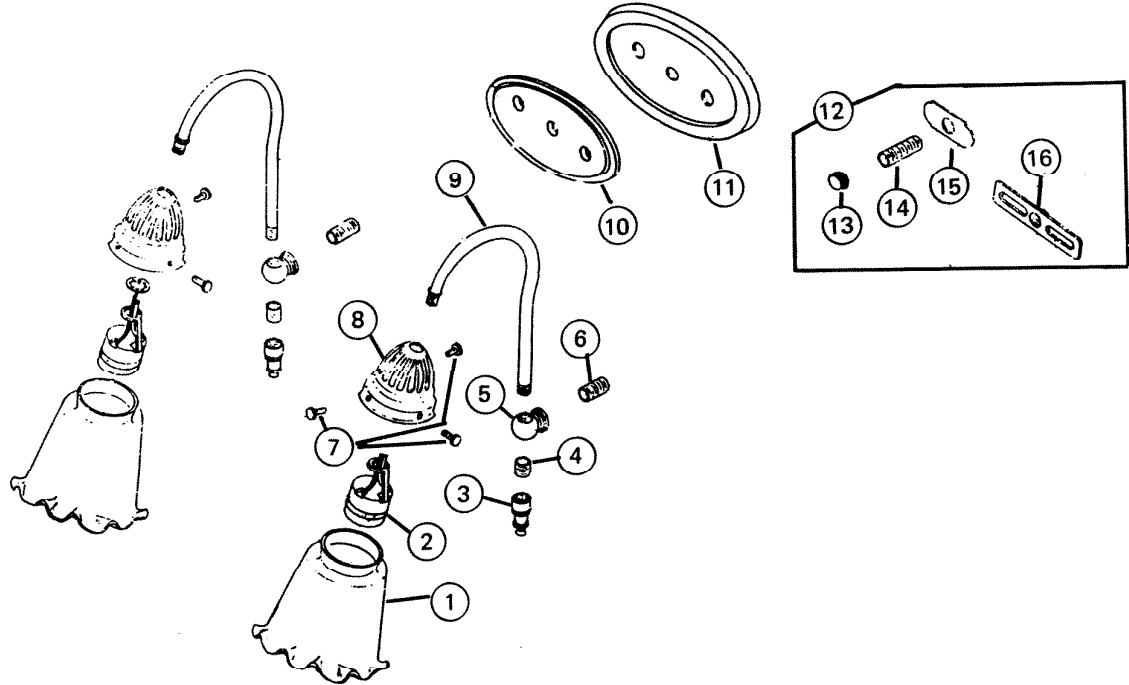


PARTS LIST

EFFECTIVE DATE	MODEL	PRODUCT GROUP
JANUARY 1985	DL-562 NEW	BATH CABINET



REF.	ORIGINAL PART NO.	* PART DESCRIPTION	MODEL USED ON	CURRENT REPLACEMENT PART NO.
1	57436	SHADE (1) 2 REQUIRED	DL-562	57436-000
2	57435	LAMPSOCKET - 18" LEADS (1)	DL-562	57435-000
3	57432	FINIAL (1)	DL-562	57432-H27
4	L2317	NIPPLE - 1/8"IPS X 1/2"L.G.(1)	DL-562	L2317-015
5	57431	7/8" ARM BACK (1)	DL-562	57431-H27
6	L6580	NIPPLE - 1/8"IPS X 1" (1)	DL-562	L6580-015
7	0827A	THUMB SCREW SET (3)	DL-562	0827A-000
8	57433	GLASS HOLDER	DL-562	57433-H27
9	57430	ARM PIPE	DL-562	57430-H27
10	57429	WOOD INLAY	DL-562	57429-A12
11	57428	OVAL BACKPLATE	DL-562	57428-H27
(PLEASE SEE OTHER SIDE)				

NuTone

PRINTED IN U.S.A.

NOTE: Always order by current part number.

REF.	ORIGINAL PART NO.	* PART DESCRIPTION	MODEL USED ON	CURRENT REPLACEMENT PART NO.
12	57476	HARDWARE ASSEMBLY	DL-562	57476-000
13	57426	BRACKET CAP	DL-562	57426-027
14	57425	NIPPLE - 1/8"IPS X 1 1/2"	DL-562	57425-015
15	57434	DECORATOR PLATE	DL-562	57434-000
16	L2406	BAR STRAP - 4" X 1/8"IPS	DL-562	L2406-000