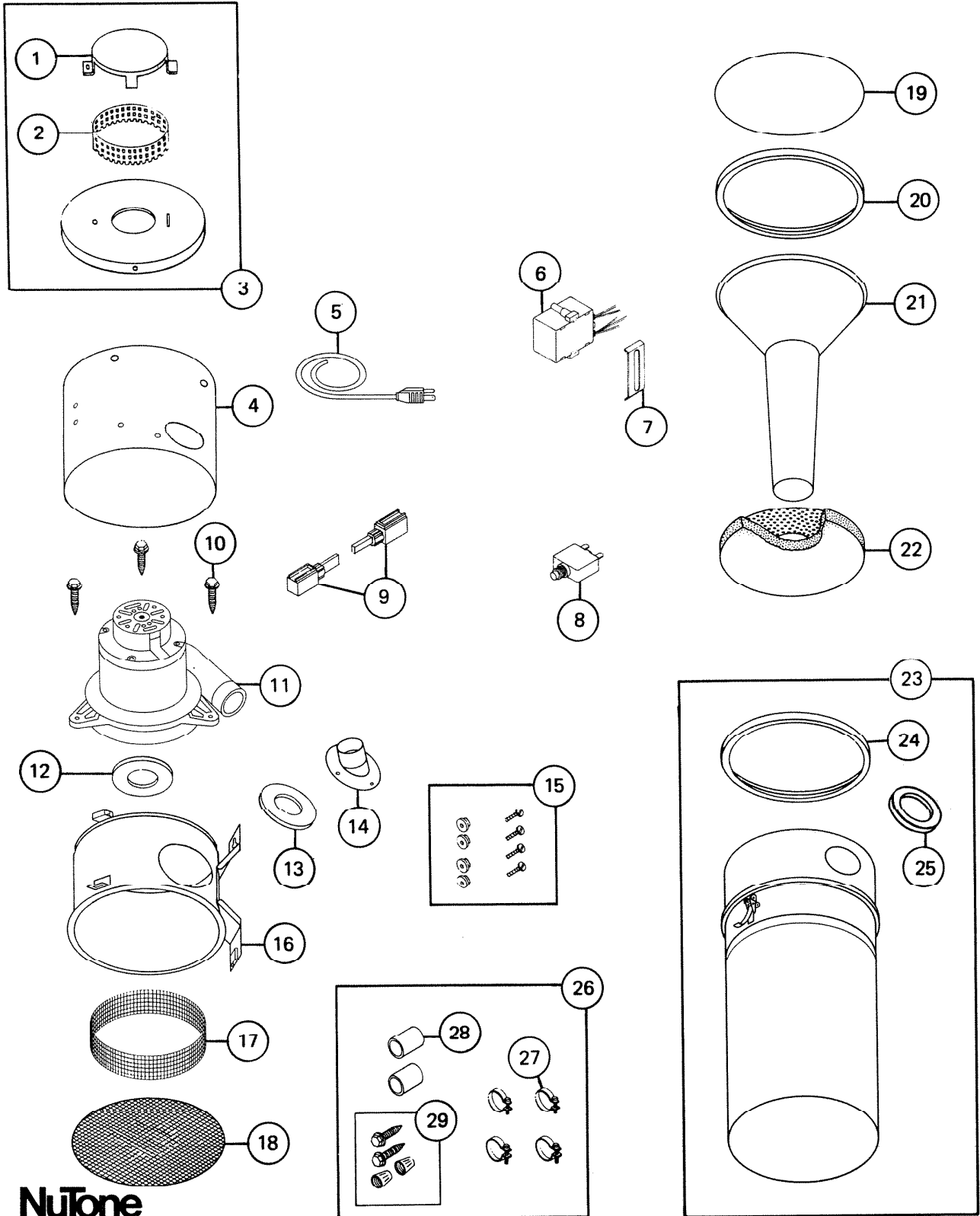


# PARTS LIST

EFFECTIVE DATE	MODEL	PRODUCT GROUP
JAN. 1991	CV-553 NEW	CENTRAL CLEANING SYSTEM



**NuTone**

REF. NO.	ORIGINAL PART NO.	*PART DESCRIPTION	CURRENT REPLACEMENT PART NO.	
1	68680	COVER CAP	68680-090	
2	68681	SCREEN	68681-000	
3	1815A	COVER ASSEMBLY	1815A-000	
4	83198	WRAP AROUND	83198-090	
5	65553	CORD SET ASSEMBLY	65553-000	
6	35862	RELAY ASSEMBLY - 10 AMP.	35862-000	
7	33822	RELAY SHIM	33822-000	
8	36166	CIRCUIT BREAKER	1853A-000	
9	8382A	BRUSH SET (2)	1852A-000	
10	52884	SCREW SET (3) #14-10 x 1" INDENT. HEX/W "A"	1851A-000	
11	33883	MOTOR ASSEMBLY - See Notes	NEW	33883-REB
			EXCHANGE	33883-EXC
12	30364	MOTOR GASKET	30364-000	
13	35961	INTAKE GASKET	35961-000	
14	34947	INTAKE FITTING	34947-000	
15	1846A	SCREW AND STUD SET - For Mounting Intake Fitting	1846A-000	
16	83191	MOTOR HOUSING ASSEMBLY	83191-090	
17	30201	FILTER SUPPORT - BACK UP	30201-000	
18	30199	FILTER SUPPORT ASSEMBLY	30199-000	
19	30197	FILTER - Secondary	30197-000	
20	30195	GASKET - Vortex and Cone Assembly	30195-000	
21	30184	VORTEX AND CONE ASSEMBLY-WO/GASKET	30184-000	
22	30202	FILTER AND PLATE ASSEMBLY - Primary	30202-000	
23	1845A	LOWER PAIL W/EXTENSION AND CLAMP ASSEMBLY	1845A-000	
24	33477	GASKET - PAIL	33477-000	
25	30206	GASKET - FOAM	30206-000	
26	33541	HARDWARE BAG ASSEMBLY	33541-000	
27	65959	CLAMP (1) - 4 Required	65959-000	
28	65960	CONNECTOR (1) - 2 Required	65960-000	
29	34800	HARDWARE PACKAGE - (2) Screws #14 x 2 PH. PAN "A" (2) Wire Nuts	34800-000	

**CUSTOMER NOTE:** MOTOR VENDOR ADVISES TO REPLACE THE MOTOR COMPLETE DUE TO THE DELICATE BALANCING INVOLVED IN REPAIR, AND SHOULD BE DONE AT THE FACTORY.

**NOTE:** WHEN ORDERING EXCHANGE MOTOR, THE CUSTOMER'S MOTOR MUST BE RETURNED TO THE PARTS DEPT. WITH THE ORDER.

↑  
**NOTE:** Always order by current part number.