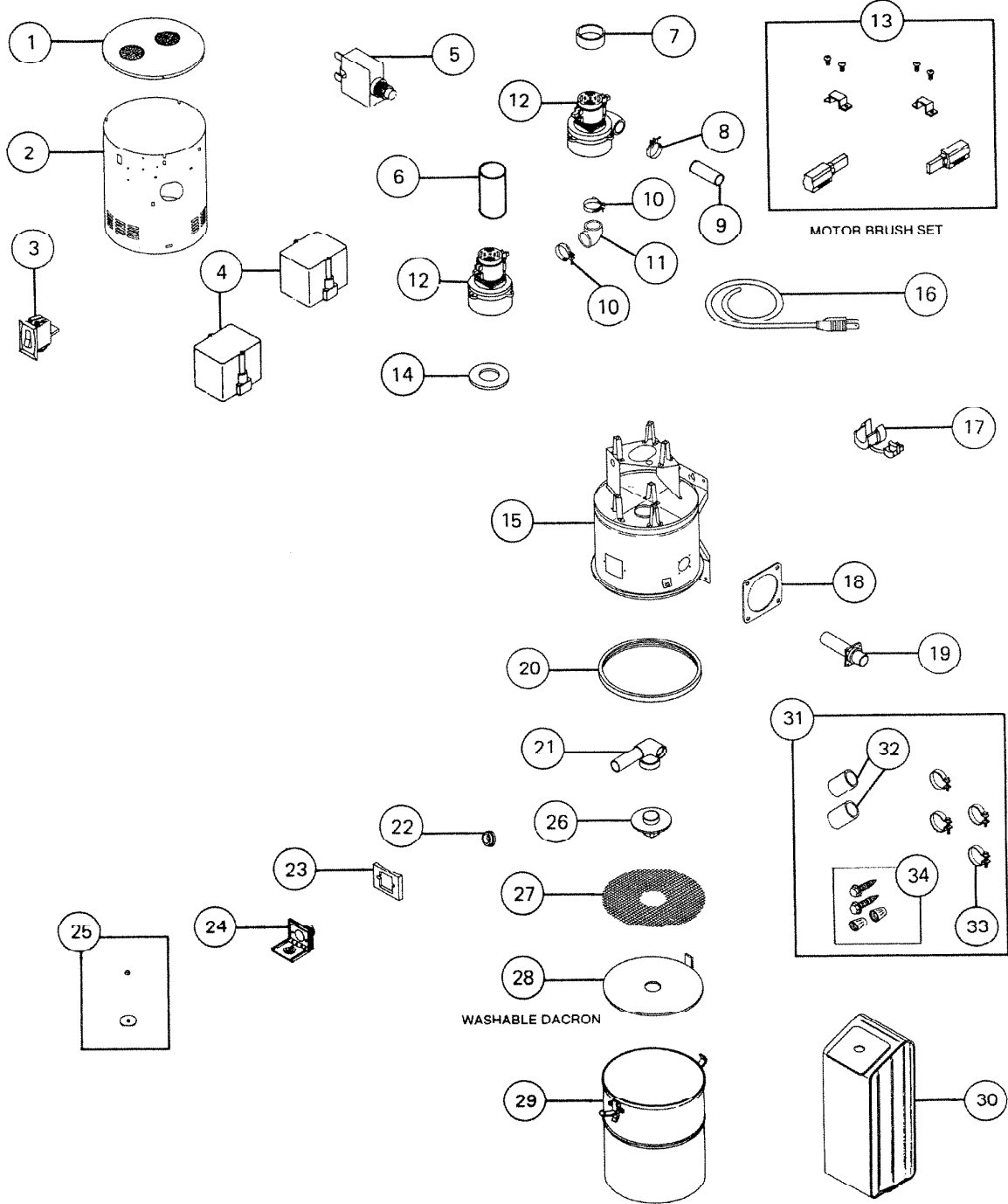


PARTS LIST

EFFECTIVE DATE	MODEL	PRODUCT GROUP
JAN. 1990	CV-450 REVISED	CENTRAL CLEANING SYSTEM



REF.	ORIGINAL PART NO.	*PART DESCRIPTION		CURRENT REPLACEMENT PART NO.	
1	35851	COVER ASSEMBLY	RED	35851-090	
			WHITE	35851-206	
2	35854	WRAPPER	RED	35854-090	
			WHITE	35854-206	
3	33536	ROCKER SWITCH		33536-000	
4	35862	RELAY ASSEMBLY — 10 Amps	UPPER— SILVER TERMINAL ON BLACK WIRE	0521B-000	
	35861		LOWER— BRASS TERMINAL ON BLACK WIRE		
5	34709	CIRCUIT BREAKER		34709-000	
6	35850	COOLING VENT TUBE		35850-000	
7	30986	COLLAR		30986-000	
8	39970	EXHAUST CLAMP		39970-000	
9	35859	EXHAUST TUBE		35859-000	
10	39971	CLAMP—FOR MOTOR CONNECTOR REF. NO. 11		39971-000	
11	35858	MOTOR CONNECTOR		30796-000	
12	39969	MOTOR	UPPER	NEW	44901-REB
				EXCHANGE—SEE NOTE:	44901-EXC
	33623		LOWER	NEW	44902-REB
				EXCHANGE—SEE NOTE:	44902-EXC
13	1803A	BRUSH SET (2)		1803A-000	
14	30364	GASKET—FOR LOWER MOTOR		30364-000	
15	35845	UPPER PAIL AND BRACKET ASSEMBLY	RED	35845-090	
			WHITE	35845-206	
16	65553	CORD SET ASSEMBLY		65553-000	
17	65495	STRAIN RELIEF	FOR POWER CORD REF. NO. 16	65495-000	
	14990		FOR LOW VOLTAGE WIRES—YELLOW	14990-000	
18	63089	GASKET—FOR REF. NO. 19		63089-000	
19	33626	MOLDED FLANGE AND TUBE ASSEMBLY		33626-000	
20	33846	PAIL GASKET		33846-000	
21	33627	TUBE ASSEMBLY		33627-000	
22	52323	GASKET—INLET		52323-000	
23	99030	WALL PLATE INLET GASKET		99030-000	
24	33836	WALL PLATE ASSEMBLY		33836-000	
25	1850A	VALVE SEAL KIT		1850A-000	
26	67822	BAG ADAPTER		67822-000	
27	35853	FILTER SUPPORT		35853-000	

REF.	ORIGINAL PART NO.	*PART DESCRIPTION	CURRENT REPLACEMENT PART NO.	
28	99024	FILTER—13" DIAMETER—DACRON	84129-000	
29	33632	LOWER PAIL AND HASP ASSEMBLY	RED	33632-000
			WHITE	33632-206
30	63166	FILTER BAG - Package of (3)	63166-000	
31	33541	HARDWARE BAG ASSEMBLY	33541-000	
32	65960	CONNECTOR (1)—2 REQUIRED	65960-000	
33	65959	CLAMP (1)—4 REQUIRED	65959-000	
34	34800	HARDWARE PACKAGE	34800-000	

CUSTOMER NOTE: MOTOR VENDER ADVISES TO REPLACE THE MOTOR COMPLETE DUE TO THE DELICATE BALANCING INVOLVED IN REPAIR, AND SHOULD BE DONE AT THE FACTORY.

NOTE: Always order by current part number.

NOTE: WHEN ORDERING EXCHANGE MOTOR, THE CUSTOMER'S MOTOR MUST BE RETURNED TO THE PARTS DEPT. WITH THE ORDER.

EARLY PRODUCTION RELAYS

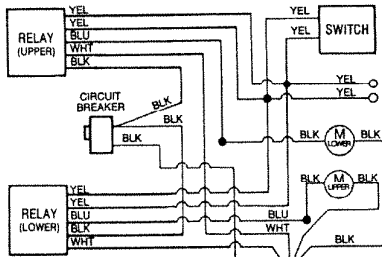
indicated the common control circuit by a black stripe on yellow wire of upper relay # 35862-000 and a red band on yellow wire of lower relay # 35861-000

CURRENT PRODUCTION RELAYS

have red stripe on one yellow wire upper relay # 35862-000 has a silver terminal on black wire. Lower relay # 35861-000 has a brass terminal on the black wire.

Old double relay

UPPER RELAY P/N 35862-000 HAS A SILVER TERMINAL ON THE BLACK WIRE.



LOWER RELAY P/N 35861-000 HAS A BRASS TERMINAL ON THE BLACK WIRE.

New single relay

