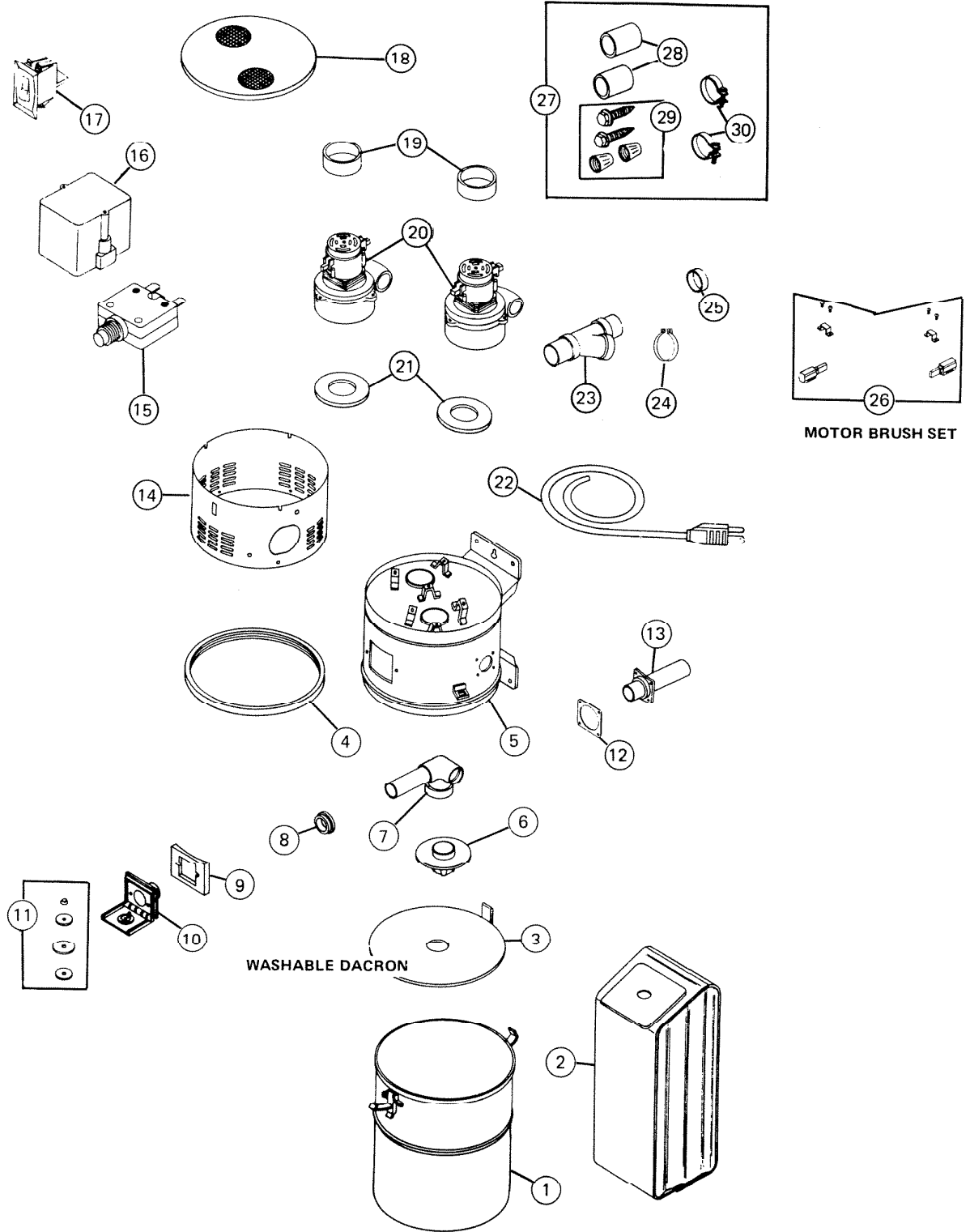



PARTS LIST

| EFFECTIVE DATE | MODEL | PRODUCT GROUP |
|----------------|-------------------|-------------------------------|
| JAN. 1990 | CV-400 REVISED | CENTRAL CLEANING SYSTEM |



| REF. NO. | ORIGINAL PART NO. | *PART DESCRIPTION | CURRENT REPLACEMENT PART NO. |
|----------|-------------------|---------------------------------------------------------------------------------------------------------------------------------------------------------------------------------------------------------------------------------------------------------------------------------------------|--------------------------------------------------------------------------------------------------------------------------------------------------------------------------------------------------------------------------------------|
| 1 | 33632 | LOWER PAIL & CI ASP ASSEMBLY | 33632-000 |
| 2 | 63165 | FILTER BAG (3) | 63166-000 |
| 3 | 99024 | FILTER 13" DIAMETER-DACRON | 99024-000 |
| 4 | 33846 | PAIL GASKET | 33846-000 |
| 5 | 33622 | UPPER PAIL & BRACKET ASSEMBLY | 33622-090 |
| 6 | 67822 | BAG ADAPTOR | 67822-000 |
| 7 | 33627 | TUBE ASSEMBLY | 33627-000 |
| 8 | 52323 | GASKET—INLET | 52323-000 |
| 9 | 99030 | WALL PLATE GASKET | 99030-000 |
| 10 | 33836 | WALL PLATE ASSEMBLY | 33836-000 |
| 11 | 1850A | VALVE SEAL KIT | 1850A-000 |
| 12 | 63089 | GASKET—IN TAKE | 63089-000 |
| 13 | 33626 | MODLED FLANGE & TUBE ASSEMBLY | 33626-000 |
| 14 | 33821 | WRAPPER | 33821-090 |
| 15 | 33629 | CIRCUIT BREAKER—15 AMP. | 34709-000 |
| 16 | 82904 | RELAY ASSEMBLY | 82904-000 |
| 17 | 33536 | SWITCH—ROCKER | 33536-000 |
| 18 | 33823 | COVER ASSEMBLY | 33823-090 |
| 19 | 32830 | COLLAR | 32830-000 |
| 20 | 33623 | MOTOR (1)—2 used | New |
| | | | Exchange *see note |
| 21 | 99022 | GASKET—MOTOR/PAIL | 34839-000 |
| 22 | 65553 | CORD SET ASSEMBLY | 65553-000 |
| 23 | 33624 | TUBING & CONNECTOR ASSEMBLY | 33624-000 |
| 24 | 33625 | CLAMP—EXHAUST | 33625-000 |
| 25 | 33851 | TUBE— $\frac{5}{8}$ " | 33851-000 |
| 26 | 1803A | MOTOR BRUSH SET | 1803A-000 |
| 27 | 33541 | HARDWARE BAG ASSEMBLY | 33541-000 |
| 28 | 65960 | CONNECTOR (1)—2 Required | 65960-000 |
| 29 | 33485 | HARDWARE PACKAGE | 34800-000 |
| 30 | 65959 | CLAMP (1)—4 Required | 65959-000 |
| | | <p>CUSTOMER NOTE: MOTOR VENDER ADVISES TO REPLACE THE MOTOR COMPLETE DUE TO THE DELICATE BALANCING INVOLVED IN REPAIR, WHICH SHOULD BE DONE AT THE FACTORY.</p> <p>NOTE: WHEN ORDERING EXCHANGE MOTOR, THE CUSTOMER'S MOTOR MUST BE RETURNED TO THE PARTS DEPT. WITH THE ORDER.</p> |  <div style="border: 1px solid black; padding: 5px; display: inline-block;"> <p>NOTE: Always order by current part number.</p> </div> |