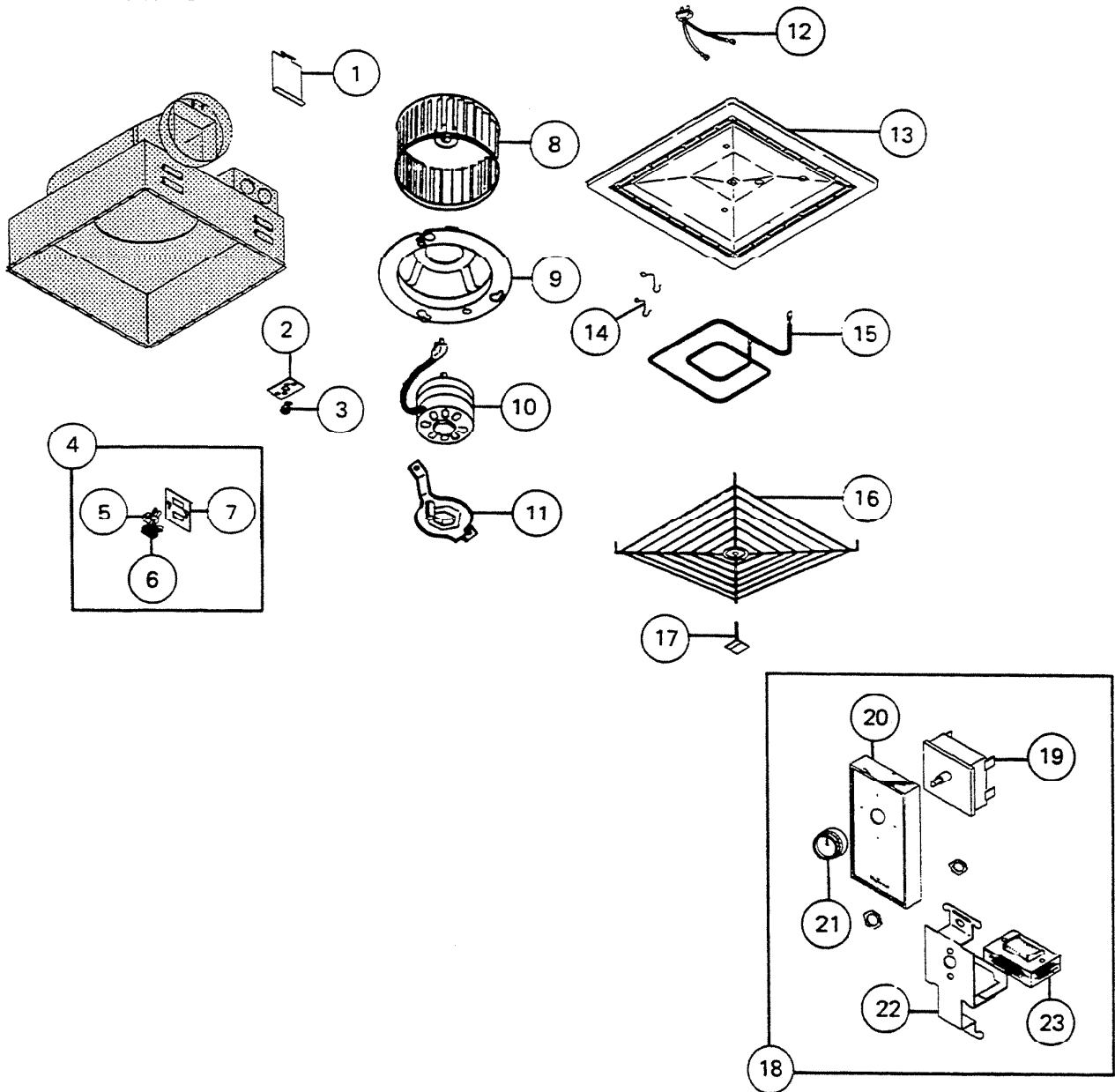


PARTS LIST

EFFECTIVE DATE	MODEL	PRODUCT GROUP
JAN. 1990	9151 9151N REVISED	HEATER

 NOT A PARTS DEPT. STOCK ITEM



REF.	ORIGINAL PART NO.	*PART DESCRIPTION		CURRENT REPLACEMENT PART NO.	
1	11394	LOUVER ASSEMBLY		11394-000	
2	19961	THERMAL PROTECTOR MOUNTING PLATE		19961-000	
3	19865	THERMAL PROTECTOR		19865-000	
4	21386	OUTLET BOX COVER ASSEMBLY		VOID NOT AVAILABLE	
5	20808	RECEPTACLE ASSEMBLY-HEATER		20808-000	
6	20809	RECEPTACLE ASSEMBLY-FAN		20809-000	
7	21387	OUTLET BOX COVER		VOID NOT AVAILABLE	
8	16296	BLOWER WHEEL		16296-000	
9	19930	VENTURI RING AND BRACKFT ASSEMBLY		9151	
	22909			9151N	
10	26761	MOTOR	Stud Mount	9151	26761-SER
	22809		Hex Mount	9151N	23388-SER
11	22811	MOTOR CLAMP—Not used on 9151		1176A-000	
12	18228	WHITE PLUG ASSEMBLY		18228-000	
13	19938	REFLECTOR		VOID NOT AVAILABLE	
14	19905	ELEMENT HOOK (1)—2 REQUIRED		19905-000	
15	19939	HEATING ELEMENT		9151	
	19904			9151N	
16	19941	GUARD		VOID NOT AVAILABLE	
17	19943	MOUNTING PLATE—Grille Screw		19943-000	
18	21390	SWITCH AND PLATE ASSEMBLY		VOID NOT AVAILABLE	
19	21396	ROTARY SWITCH		21396-000	
20	21391	SWITCH PLATE ASSEMBLY		VOID NOT AVAILABLE	
21	21404	KNOB		9052A-000	
22	21395	SWITCH AND CHOKE BRACKET		21395-000	
23	21397	CHOKE COIL		21397-000	

↑

NOTE: Always order by current part number.