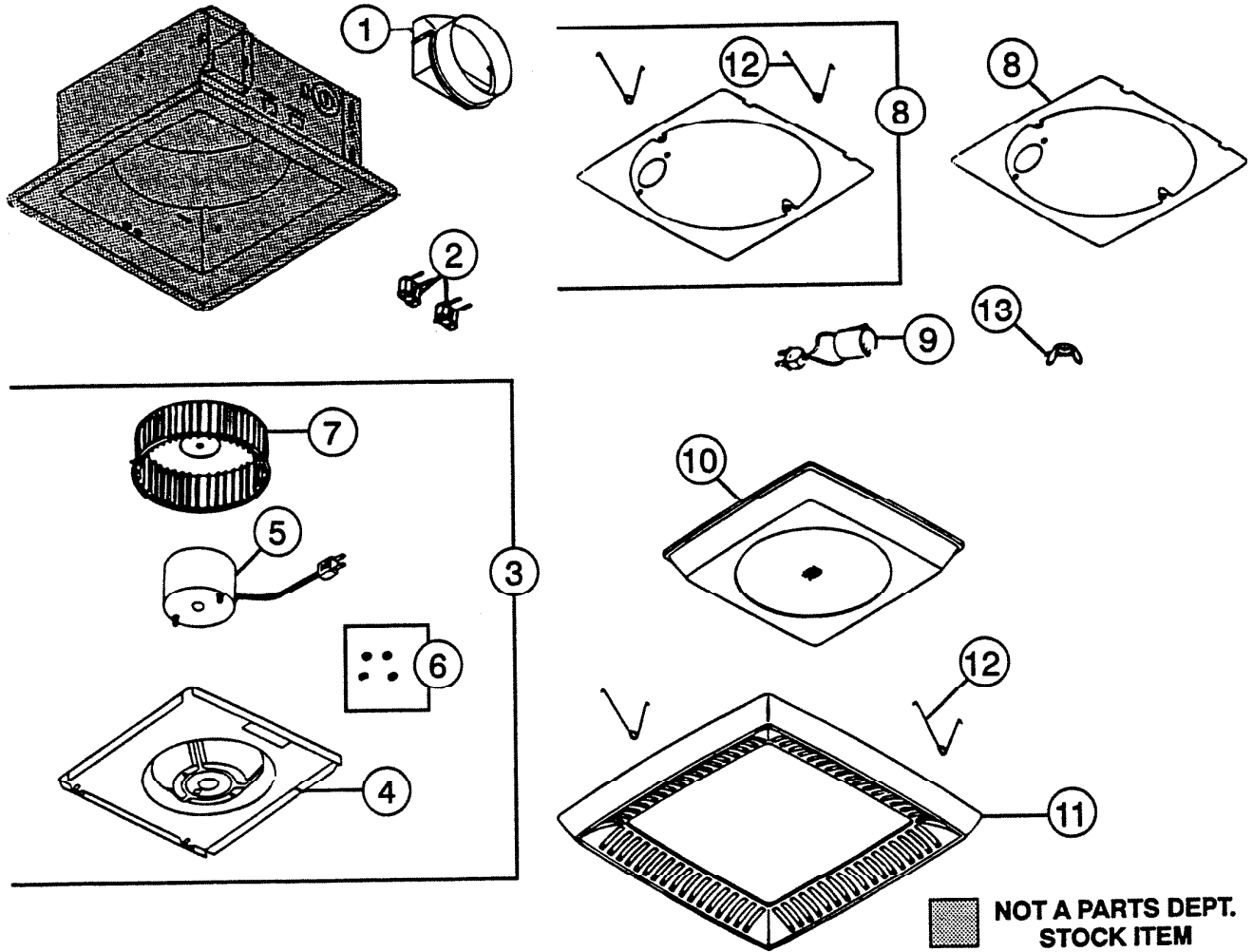


# PARTS LIST

EFFECTIVE DATE	MODEL NUMBER	PRODUCT GROUP
JANUARY 1995	8673P, 8673NP REVISED 8673 NLP NEW	EXHAUST FAN



REF.	ORIGINAL PART NO.	*PART DESCRIPTION	MODEL USED ON	CURRENT REPLACEMENT PART NO.
1	53697	DUCT ADAPTOR ASSEMBLY	8673P 8673NP	30652-000
2	10034	PLUG RECEPTACLE - 2 REQUIRED	8673P 8673NP	10034-000

(PLEASE SEE OTHER SIDE)

# NuTone

NuTone  
Attn: Parts Department  
Madison & Red Bank Rds.  
Cincinnati, OH 45227-1599  
Phone: (513) 527-5426  
Fax: (513) 527-5173

↑  
**NOTE: Always order by current part number**

REF.	ORIGINAL PART NO.	*PART DESCRIPTION	MODEL USED ON	CURRENT REPLACEMENT PART NO.
3	0410A	POWER UNIT ASSEMBLY	8673P	0411A-000
	0411A		8673NP	0411A-000
4	53580	MOTOR MTG. PLATE ASSEMBLY	8673P	44188-000
	57803		8673NP	0455A-000
5	53581	MOTOR & BUMPERS	8673P 8673NP	0407A-000
6	0406A	RUBBER BUMPER SET	8673P 8673NP	0406A-000
7	51919	BLOWER WHEEL	8673P 8673NP	5900A-000
8	0404A	REFECTOR	8673P	1174A-000
	57814		8673NP	57814-206
	36909		8673NLP	36909-000
9	53588	LAMP SOCKET	8673P, 8673NP	53588-000
10	53306	LENS	8673P, 8673NP	53306-000
11	54237	GRILLE KIT	8673P	1169A-000
	57816		8673NP	
12	56700	RETAINING SPRING -(2)	8673P	0446A-000
	57000		8673NP	0444A-000
13	16133	WING NUT - ¼ X 20	8673NP	16133-000
-	36908	REFLECTOR WITH SOCKETS	8673NLP	36908-000
--	36895	LAMP SOCKETS & PLUG HOUSING ASSEM.	8673NLP	36895-000

↑

**NOTE: Always order by current part number**