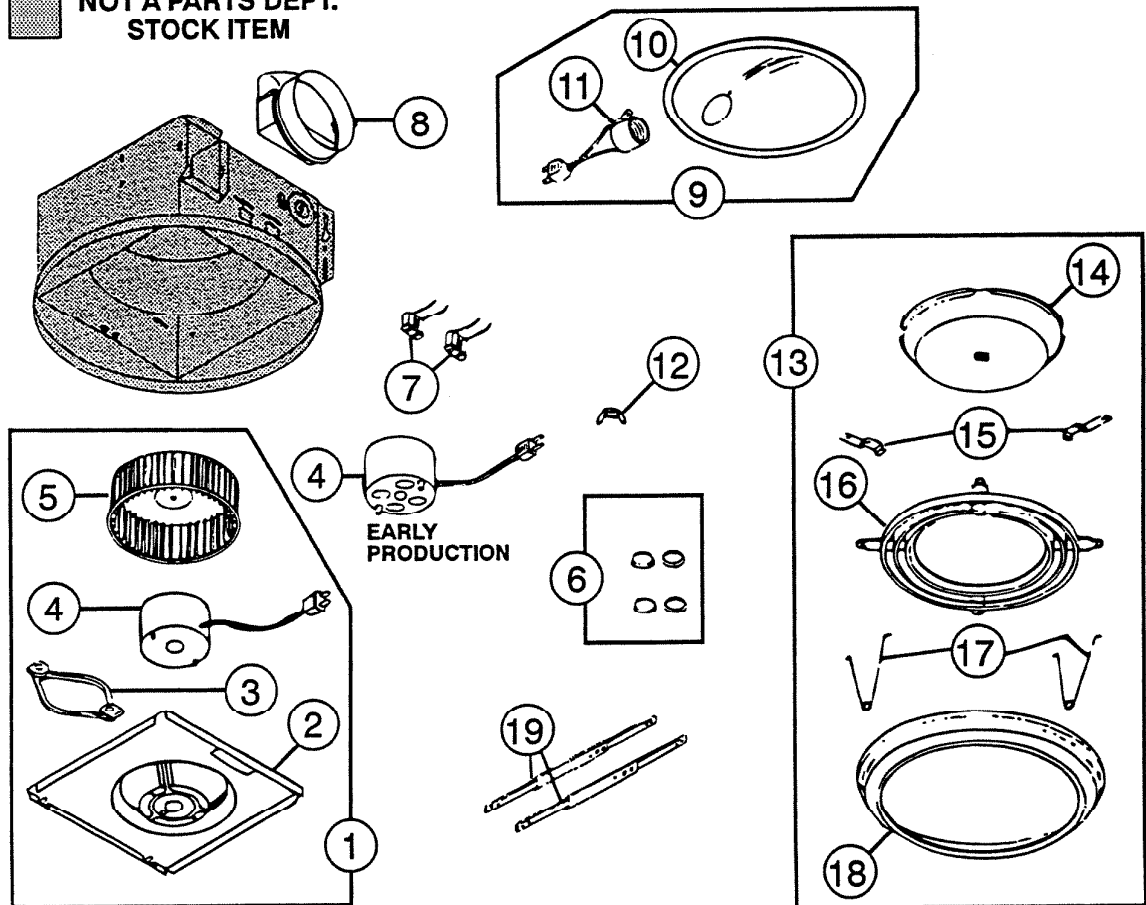


PARTS LIST

EFFECTIVE DATE	MODEL NUMBER	PRODUCT GROUP
JANUARY 1995	8663DG REVISED 8663NLDG/LG NEW	FAN

■ NOT A PARTS DEPT. STOCK ITEM



REF.	ORIGINAL PART NO.	*PART DESCRIPTION	MODEL USED ON	CURRENT REPLACEMENT PART NO.
1	0411A	POWER UNIT ASSEMBLY	8663DG	0411A-000
2	57804	MOTOR MOUNTING PLATE	8663DG	0455A-000
3	0441A	MOTOR ISOLATION MOUNT/with ground clip	8663DG	0441A-000
4	53581	MOTOR	8663DG	0407A-000
5	51919	BLOWER WHEEL w/PUSH NUT	8663DG	5900A-000
6	0406A	BUMPER SET (Early production)	8663DG	0406A-000
(PLEASE SEE OTHER SIDE)				

NuTone

NuTone
Attn: Parts Department
Madison & Red Bank Rds.
Cincinnati, OH 45227-1599
Phone: (513) 527-5426
Fax: (513) 527-5173

↑
NOTE: Always order by current part number

REF	ORIGINAL PART NO.	*PART DESCRIPTION	MODEL USED ON	CURRENT REPLACEMENT PART NO.
7	10034	PLUG RECEPTACLE (1) — 2 Required	8663DG	10034-000
8	53697	DUCT ADAPTOR ASSEMBLY	8663DG	30652-000
9	57805	REFLECTOR ASSEMBLY	8663NLDG/LG	36893-000
			8663DG	57805-000
10	57806	REFLECTOR ONLY	8663NLDG/LG	36894-000
			8663DG	57806-000
11	53588	SOCKET ASSEMBLY	8663NLDG/LG	36895-000
			8663DG	53588-000
12	16133	WING NUT 1/4 — 20	8663DG	16133-000
13	57841	GRILLE ASSEMBLY (ROUND)	8663LG	44450-000
			8663DG	57840-000
14	53585	LENS (ROUND)	8663DG	53585-000
15	32837	RETAINER — Lens (1), 2 Required	8663DG	33426-015
16	32834	GRILLE ONLY	8663DG	58796-000
17	57000	SPRING SET (2)	8663DG	0444A-000
18	58798	BEZEL (ROUND)	8663LG	58797-279
			8663DG	58797-280
19	13306	HANGER ROD SET (2)	8663DG	13306-000

↑

NOTE: Always order by current part number