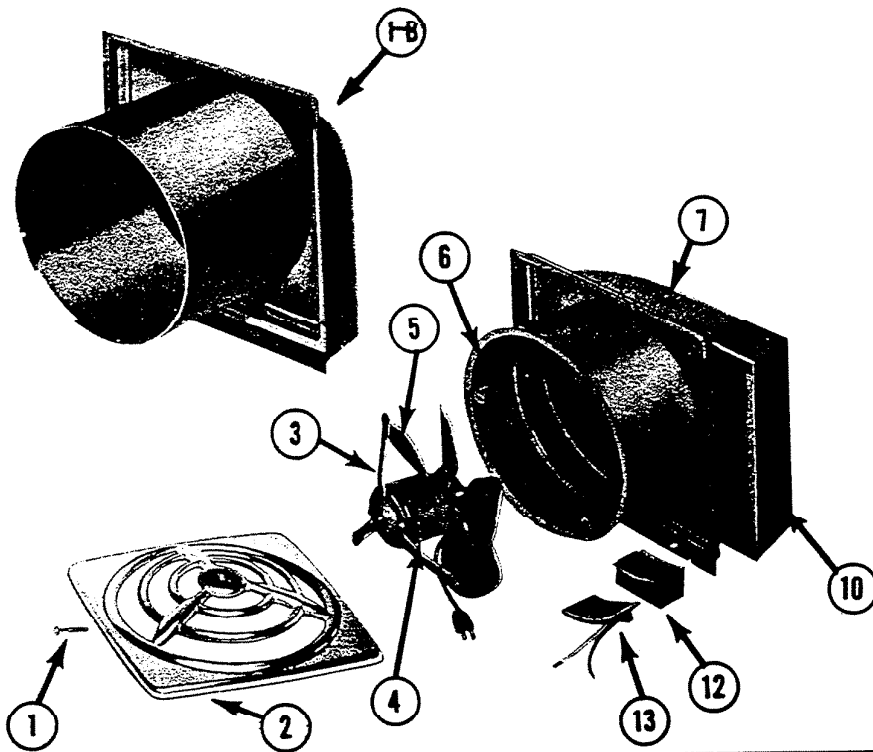


**NUTONE**  
**Model**  
**817**  
**819**  
**VENTILATING FAN**  
**Parts List**



ILLUSTR. NO.	PART NO.	PART DESCRIPTION	NOTES
	<b>Model</b>	<b>Description</b>	
	<b>817</b>	<b>817 Accommodates Wall Thickness 5" to 10"</b>	
		<b>Aluminum Grille</b>	
	<b>819</b>	<b>819 Accommodates Wall Thickness 9" to 14"</b>	
		<b>Aluminum Grille</b>	
1	11246	Grille Screw	
2	12044	Grille	
3	10862	Motor Bracket Assembly	
4	10785	Motor	
5	10875	Fan Blade Assembly	
6	10854	Inside Sleeve Assembly	
7	12061	Outside Sleeve, Hood and Panel Assembly	
8	12062	Short Felt	
9	12079	Long Felt	
10	12069	Louver Assembly	Louver assembly includes hinge rod.
11	12492	Spring	
12	10029	Outlet Box	
13	10879	Outlet Box Cover Assembly	
1	12068	819 Outside Sleeve, Hood and Panel Assembly	Difference between 817-819 is outside sleeve length.

PRICES SUBJECT TO CHANGE WITHOUT NOTICE

Order Parts From: PARTS DEPT. C/O

**NuTone**  
DIVISION

Printed in U.S.A.