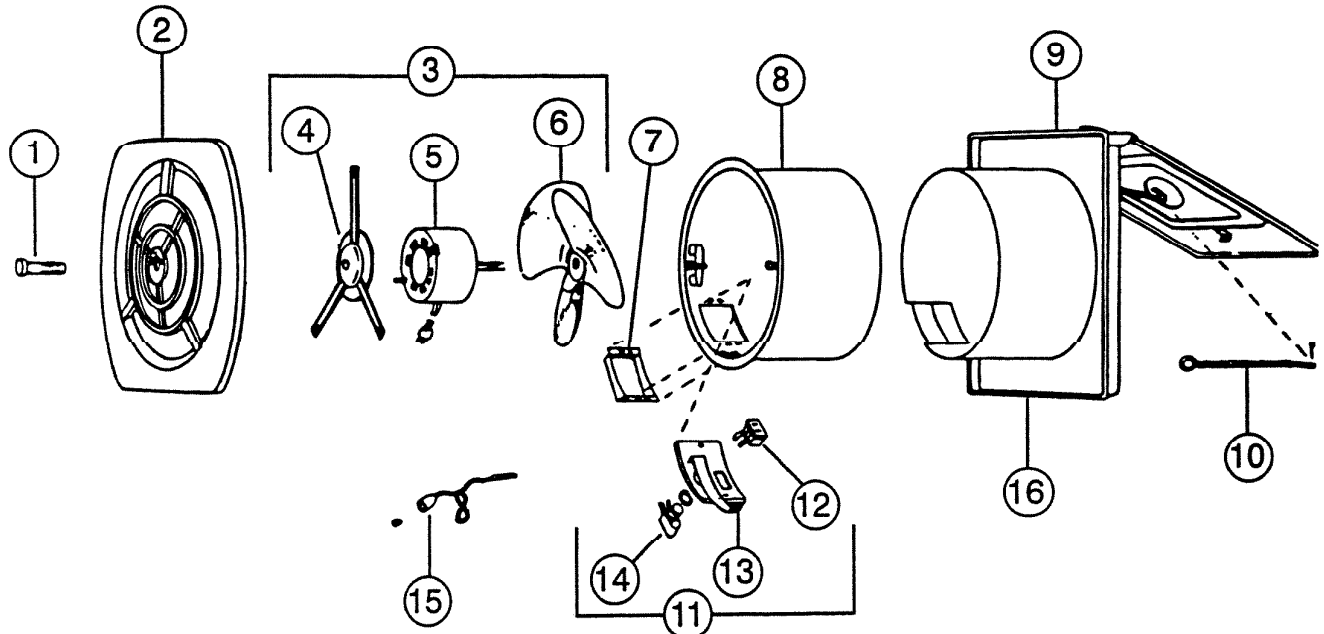


PARTS LIST

EFFECTIVE DATE	MODEL NUMBER	PRODUCT GROUP
JANUARY 1995	8110-8130, 8110WH REVISED	FANS



REF.	ORIGINAL PART NO.	*PART DESCRIPTION	MODEL USED ON	CURRENT REPLACEMENT PART NO.
1	11245	GRILLE SCREW	All Models	11245-001
2	69001	GRILLE ASSEMBLY-11" SQUARE ALUMINUM WHITE	All Models	17707-018
				17707-206
3	69029	"B" UNIT (REF. NO. 4, 5, AND 6)	All Models	69029-000
4	10344	MOTOR BRACKET	All Models	69098-000
5	26754	MOTOR 5/16" SHAFT - NO. ON DATA PLATE AK4K36A OR AA2MO80F	All Models	26754-SER
6	14400	FAN BLADE - 10" DIAMETER 5/16" HUB	All Models	14400-000
7	10029	OUTLET BOX	All Models	10029-005
8	10002	INSIDE SLEEVE ASSEMBLY	All Models	1255A-000
9	10008	OUTSIDE SLEEVE AND PANEL ASSEMBLY	8110	10008-000
10	12438	SPRING ROD ASSEMBLY	All Models	12438-000
(PLEASE SEE OTHER SIDE)				

NuTone

NuTone
 Attn: Parts Department
 Madison & Red Bank Rds.
 Cincinnati, OH 45227-1599
 Phone: (513) 527-5426
 Fax: (513) 527-5173

↑

NOTE: Always order by current part number

REF.	ORIGINAL PART NO.	*PART DESCRIPTION	MODEL USED ON	CURRENT REPLACEMENT PART NO.
11	12498	OUTLET BOX COVER ASSY. (Ref. no's. 12, 13 & 14)	All Models	12498-000
12	10034	PLUG RECEPTACLE	All Models	10034-000
13	69056	OUTLET BOX COVER AND LEVER ONLY	All Models	69056-000
14	10035	SWITCH (PUSH TYPE)	All Models	10035-000
15	10164	ENVELOPE ASSEMBLY (PULL CHAIN)	All Models	10164-000
16	10129	OUTSIDE SLEEVE, PANEL AND LOUVER	8130	Void - not avail.

↑

NOTE: Always order by current part number