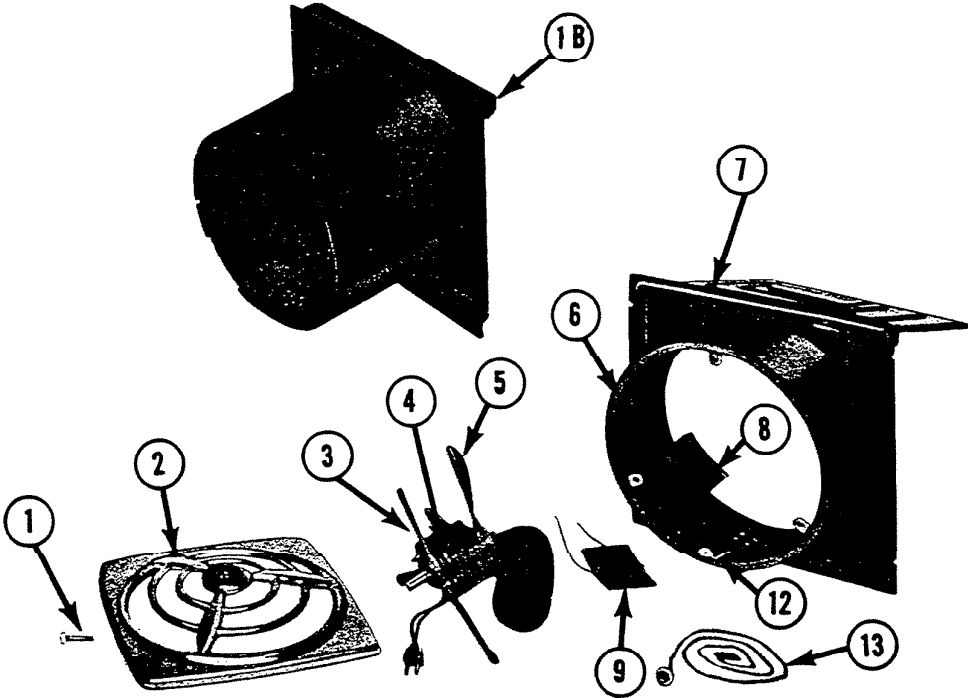


**NUTONE**  
**Model**  
**811**  
**813**  
**VENTILATING FAN**  
**Parts List**



Model		Description		NOTES
811		10" PULL CHAIN		
813		811 Fits Wall Thickness 5" - 10 1/8"		
		813 Fits Wall Thickness 9" - 14 1/8"		
ILLUSTR. NO.	PART NO.	PART DESCRIPTION		
1	11245	Grille Screw		
2	12044	Grille		
3	10344	Motor Bracket Assembly		
4	10342	Motor (Alternate - 12033)		
5	10710	Fan Blade Assembly		
6	10020	Inside Sleeve Assembly		
7	10008	Outside Sleeve, Louver and Panel Assembly		
8	10029	Outlet Box		
9	12498	Outlet Box Cover Assembly		
10	10021	Felt Strips		
11	12053	Spring Rod		
12	12042	Chain Catch		
13	10164	Envelope Assembly		
		813		
1-B	10129	Outside Sleeve, Panel, and Louver Assembly		

Envelope assembly contains chain pendant, chain spring, chain coupling, envelope.

PRICES SUBJECT TO CHANGE WITHOUT NOTICE

Order Parts From: PARTS DEPT. C/O

**NuTone**

DIVISION  
 Madison and Red Bank Rds., Cincinnati, O. 45227

\*Part used on other model/s

Printed in U.S.A.