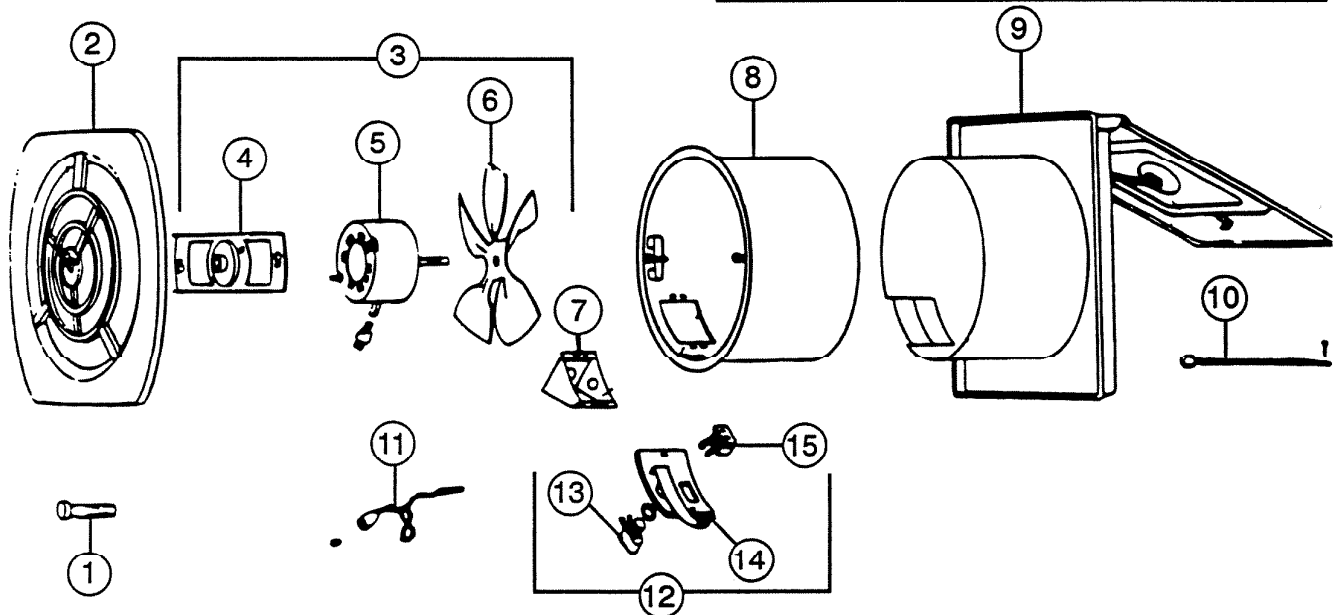


# PARTS LIST

EFFECTIVE DATE	MODEL NUMBER	PRODUCT GROUP
JANUARY 1995	8000, 8010, 8020, 8030, 8040, 8050 REVISED 8010N-NEW	EXHAUST FAN



REF.	ORIGINAL PART NO.	*PART DESCRIPTION	MODEL USED ON	CURRENT REPLACEMENT PART NO.
1	11245	GRILLE SCREW	8000, 8010, 8020, 8030, 8040, 8050, 8010N	11245-001
2	17710	GRILLE ASSEMBLY	8000, 8020, 8040	17703-018
	17711	WHITE	8010, 8030, 8050, 8010N	17703-206
3	69027	"B" UNIT ASSEMBLY	8000, 8010, 8020, 8030, 8040, 8050	69027-000
			8010N	0432A-000
4	11829	MOTOR BRACKET ASSEMBLY	8000, 8010, 8020, 8030, 8040, 8050, 8010N	11829-000
5	26750	MOTOR	8000, 8010, 8020, 8030, 8040, 8050	26750-SER
			8010N	35107-000
(PLEASE SEE OTHER SIDE)				

# NuTone

NuTone  
Attn: Parts Department  
Madison & Red Bank Rds.  
Cincinnati, OH 45227-1599  
Phone: (513) 527-5426  
Fax: (513) 527-5173

NOTE: Always order by current part number

REF.	ORIGINAL PART NO.	*PART DESCRIPTION	MODEL USED ON	CURRENT REPLACEMENT PART NO.
6	11805	FAN BLADE	8000, 8010, 8020, 8030, 8040, 8050	11805-000
			8010N	35108-000
7	10473	OUTLET BOX	8000, 8010, 8020, 8030, 8040, 8050, 8010N	10473-000
8	10154	INSIDE SLEEVE ASSEMBLY	8000, 8010, 8010N	10154-000
	10243		8020, 8030 8040, 8050	VOID-NOT AVAILABLE
9	10157	OUTSIDE SLEEVE, PANEL & LOUVER	8000, 8010, 8010N	10157-000
	10169		8020, 8030, 8040, 8050	VOID-NOT AVAILABLE
	10245			
10	12438	ROD AND SPRING ASSEMBLY	8000, 8010, 8020, 8030, 8040, 8050, 8010N	12438-000
11	10164	PULL CHAIN ASSEMBLY	8000, 8010, 8020, 8030, 8040, 8050, 8010N	10164-000
12	12497	OUTLET BOX COVER ASSEMBLY	8000, 8010, 8020, 8030, 8040, 8050, 8010N	12497-000
13	10035	PUSH SWITCH	8000, 8010, 8020, 8030, 8040, 8050, 8010N	10035-000
14	12495	OUTLET BOX COVER	8000, 8010, 8020, 8030, 8040, 8050, 8010N	0457A-000
15	10034	PLUG RECEPTACLE	8000, 8010, 8020, 8030, 8040, 8050, 8010N	10034-000

↑

**NOTE: Always order by  
current part number**