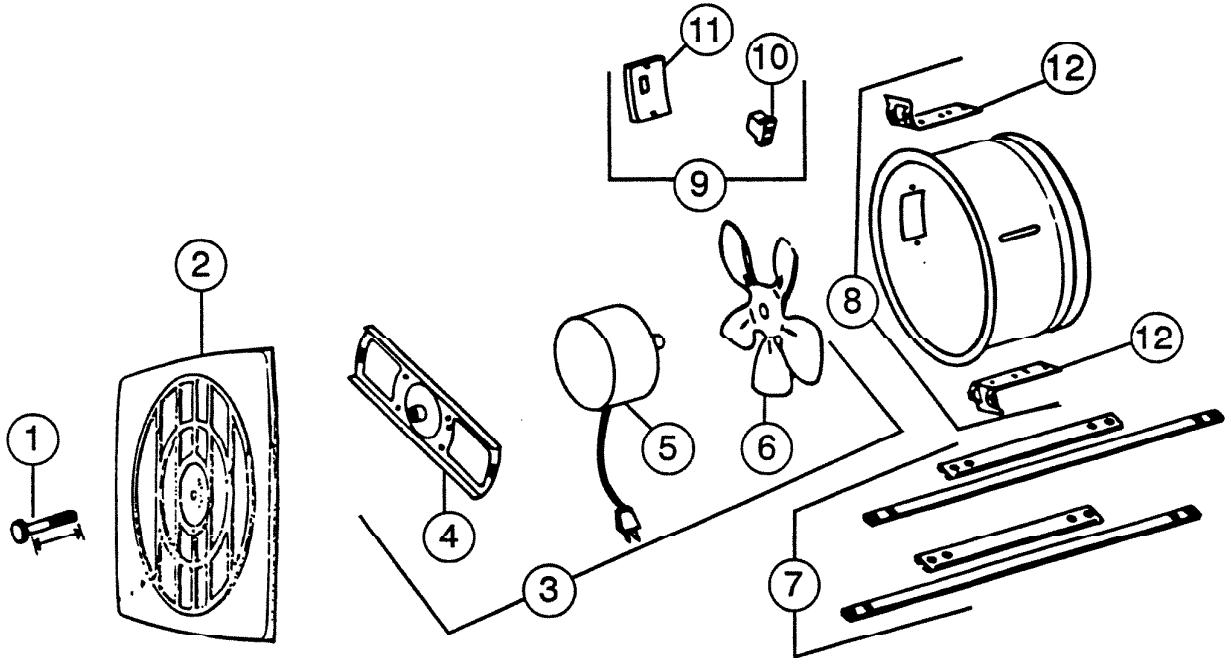


PARTS LIST

EFFECTIVE DATE	MODEL NUMBER	PRODUCT GROUP
OCTOBER 1994	622 REVISED	FAN



REF.	ORIGINAL PART NO.	*PART DESCRIPTION	MODEL USED ON	CURRENT REPLACEMENT PART NO.
1	11244	GRILLE SCREW (¼ - 20 1" LONG)	622	11244-001
2	13063	GRILLE ASSEMBLY	622	11751-018
3	69025	"B" UNIT REF. NO'S. 4, 5, AND 6	622	69028-000
4	11829	MOTOR BRACKET	622	11829-000
5	26750	MOTOR	622	26750SER
6	11805	FAN BLADE	622	11805-000
7	13306	HANGER BAR SET (2)	622	13306-000
8	10941	SLEEVE ASSY. w/#10949 CFILING MOUNTING BRACKET	622	10941-005
9	10247	OUTLET BOX COVER ASSEMBLY	622	10247-000
10	10034	PLUG RECEPTACLE	622	10034-000
11	10177	OUTLET BOX COVER	622	10247-000
-	10473	OUTLET BOX (NOT SHOWN)	622	10473-000
12	10949	CEILING MTG. BRACKET (SET OF 4)	622	53194-000

NuTone

NuTone
 Attn: Parts Department
 Madison & Red Bank Rds.
 Cincinnati, OH 45227-1599
 Phone: (513) 527-5426
 Fax: (513) 527-5173

↑
NOTE: Always order by current part number