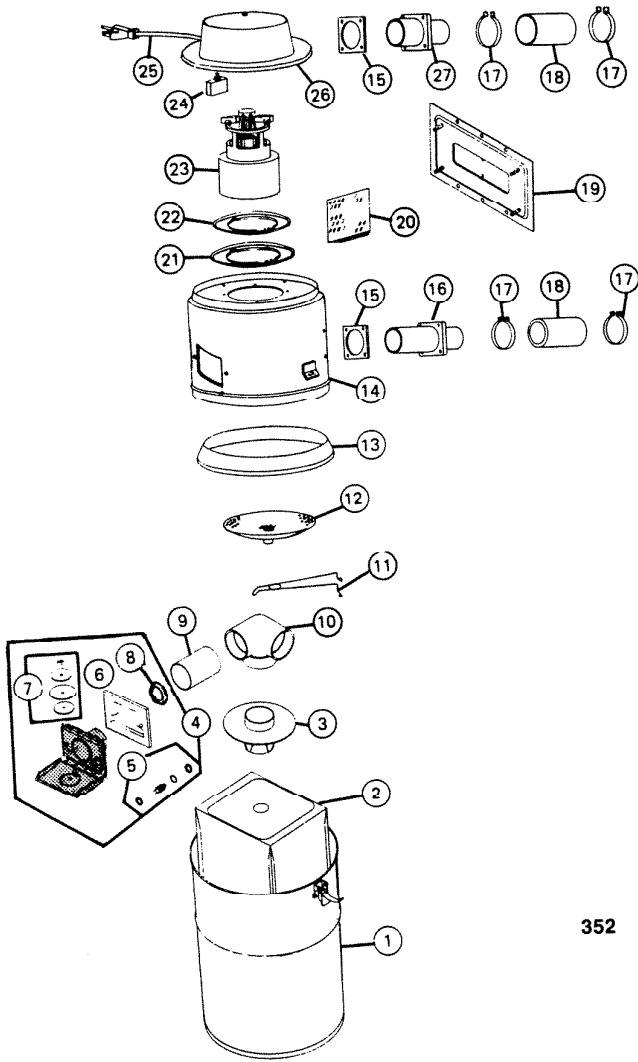
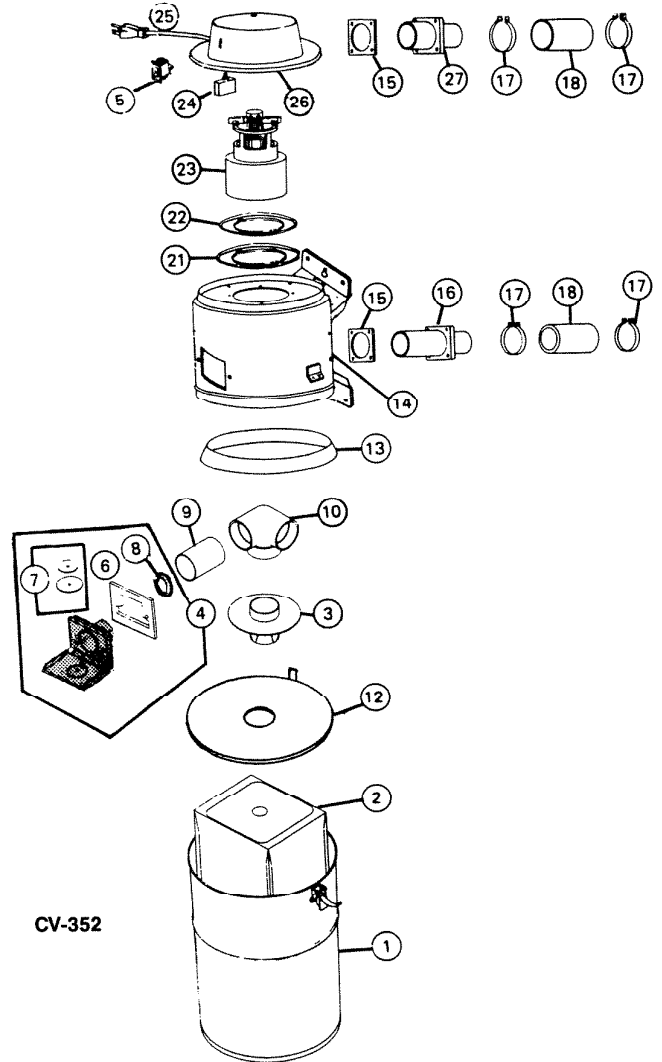


PARTS LIST

EFFECTIVE DATE	MODEL	PRODUCT GROUP
MAY 1989	CV-352 352 REVISED	CENTRAL CLEANING

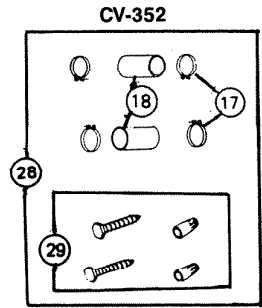
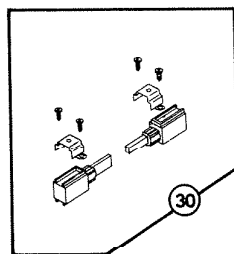
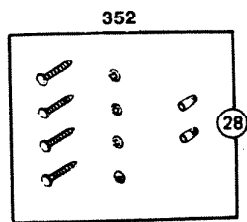


352



CV-352

 NOT A PARTS DEPT. STOCK ITEM



REF.	ORIGINAL PART NO.	*PART DESCRIPTION	MODEL USED ON	CURRENT REPLACEMENT PART NO.
1	68972	LOWER PAIL ASSEMBLY	352	68972-000
	68974		CV-352	68974-090
2	63165	FILTER BAG ASSEMBLY	352/CV-352	63165-000
3	67822	BAG ADAPTOR	352/CV-352	67822-000
4	52009	WALL PLATE ASSEMBLY	352	52009-000
	33836		CV-352	33836-000
5	50878	SWITCH—S.P.S.T.	352	50878-000
	33536	SWITCH—ROCKER	CV-352	33536-000
6	68674	GASKET WALL PLATE	352	68674-000
	99030		CV-352	99030-000
7	1618A	VALVE SEAL KIT	352	1618A-000
	1850A		CV-352	1850A-000
8	52323	GASKET—INLET	352/CV-352	52323-000
9	52322	TUBE	352/CV-352	52322-000
10	68673	3-WAY ELL	352/CV-352	68673-000
11	64653	SPRING RETAINER	352	64653-000
12	65956	SECONDARY FILTER ASSEMBLY	352	65956-000
	99023		CV-352	99023-000
13	63086	PAIL GASKET	352	33477-000
	33477		CV-352	
14	56855	MOTOR HOUSING ASSEMBLY	352	Void Not Available
	33934		CV-352	33934-090
15	63089	GASKET	352/CV-352	63089-000
16	68683	MOLDED FLANGE AND TUBE—INTAKE	352/CV-352	68683-000
17	63096	CLAMP (1)—4 REQUIRED	352/CV-352	65959-000
18	63095	CONNECTOR (1)—2 REQUIRED	352/CV-352	65960-000
19	63187	WALL ADAPTOR PLATE ASSEMBLY	352	63187-005
20	56883	GUARD—EXHAUST	352	Void Not Available
21	63243	SEAL GASKET	352/CV-352	63243-000
22	63244	MOTOR MOUNTING PLATE	352/CV-352	63244-000
23	56858	MOTOR—SEE NOTES:	New	56858-REB
			Exchange	56858-EXC
24	56862	RELAY	352	82904-000
	33773		CV-352	
25	56864	CORD SET ASSEMBLY	352/CV-352	56864-000
26	56861	COVER ONLY	352	Void Not Available
	82953		CV-352	82953-090
27	63249	MOLDED FLANGE AND TUBE—EXHAUST	352/CV-352	63249-000
28	52730	HARDWARE PACKAGE	352	52730-000
	33541		CV-352	33541-000
29	33485	HARDWARE BAG	CV-352	34800-000
30	1803A	BRUSH KIT (2)	352/CV-352	1803A-000

CUSTOMER NOTE: Motor vendor advises to replace the motor complete due to the delicate balancing involved in repair, and should be done at the factory.

NOTE: When ordering exchange motor, the customer's motor must be returned to the Parts Dept. with the order.

NOTE: Always order by current part number.