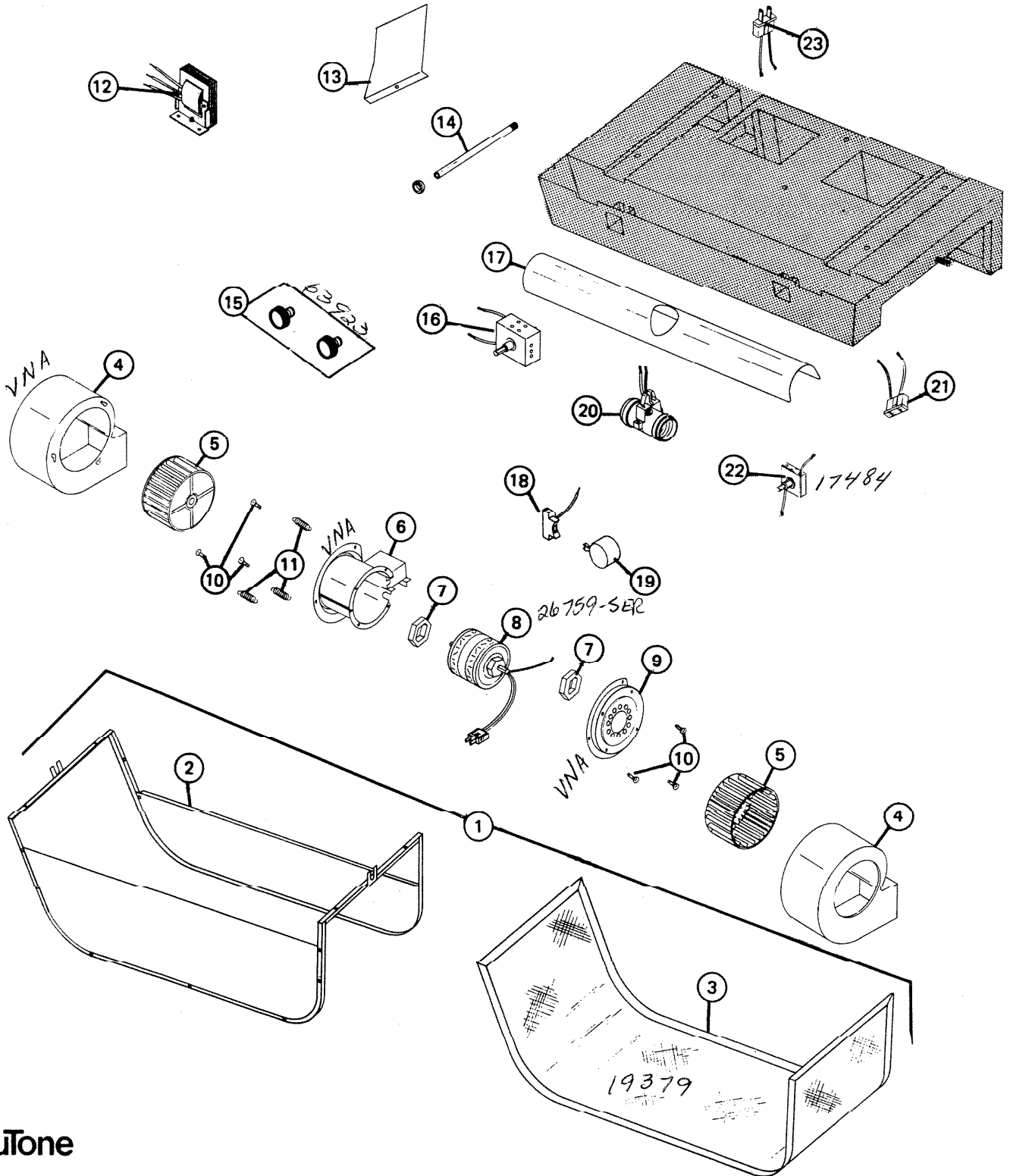


PARTS LIST

EFFECTIVE DATE	MODEL	PRODUCT GROUP
JULY 1984	3090, 3091, 3092, 3093N OBSOLETE-REVISED	HOOD



NuTone

NOT A PARTS DEPT. STOCK ITEM

REF	ORIGINAL PART NO	* PART DESCRIPTION		MODEL USED ON	CURRENT REPLACEMENT PART NO
1	19370	FILTER HOUSING COMPLETE		3090, 3091, 3092, 3093N	19370-000
2	19371	FILTER FRAME ASSEMBLY		3090, 3091, 3092, 3093N	19371-000
3	19379	FILTER		3090, 3091, 3092, 3093N	19379-000
4	19345	BLOWER HOUSING	L.H.	3090, 3091	VOID-NOT AVAILABLE
	19344		R.H.	3092, 3093N	19344-005
5	19357	BLOWER WHEEL	CW - L.H.	3090, 3091	19357-000
	19358		CCW - R.H.	3092, 3093N	19358-000
6	19349	MOTOR HOUSING		3090, 3091, 3092, 3093N	VOID-NOT AVAILABLE
7	19360	MOTOR MOUNT		3090, 3091, 3092, 3093N	19360-000
8	26739	MOTOR		3090, 3091, 3092, 3093N	26739-SER
9	19347	MOTOR PLATE		3090, 3091, 3092, 3093N	19347-005
10	11160	CLAMPING RIVET - 6 REQUIRED		3090, 3091, 3092, 3093N	11160-015
11	11161	CLAMPING SPRING - 3 REQUIRED		3090, 3091, 3092, 3093N	11161-003
12	21362	CHOKE COIL		3090, 3091, 3092	21362-000
13	19335	JUNCTION BOX COVER		3090, 3091, 3092, 3093N	19335-005
14	19317	WIRING TUBE		3090, 3091, 3092, 3093N	VOID-NOT AVAILABLE
15	21515	KNOB SET		3090, 3091, 3092, 3093N	63923-000
	63923				
16	19325	FAN SPEED CONTROL		3090, 3091, 3092, 3093N	19325-000
	26546				26546-000
17	19319	REFLECTOR		3090, 3091, 3092, 3093N	19319-014
18	69152	LUMILINE LAMP BASE		3091, 3092	69152-000
19	69153	LUMILINE LAMP CAP		3091, 3092	69153-000
20	19329	TWIN LAMP SOCKET		3090, 3093N	19329-000
(PLEASE SEE OTHER SIDE)					

REF.	ORIGINAL PART NO.	PART DESCRIPTION	MODEL USED ON	CURRENT REPLACEMENT PART NO.
21	10034	PLUG RECEPTACLE	3090,3091, 3092,3093N	10034-000
22	17482	LIGHT SWITCH	3090,3091, 3092,3093N	17484-000
23	19326	PLUG	3090,3091, 3092,3093N	VOID-NOT AVAILABLE