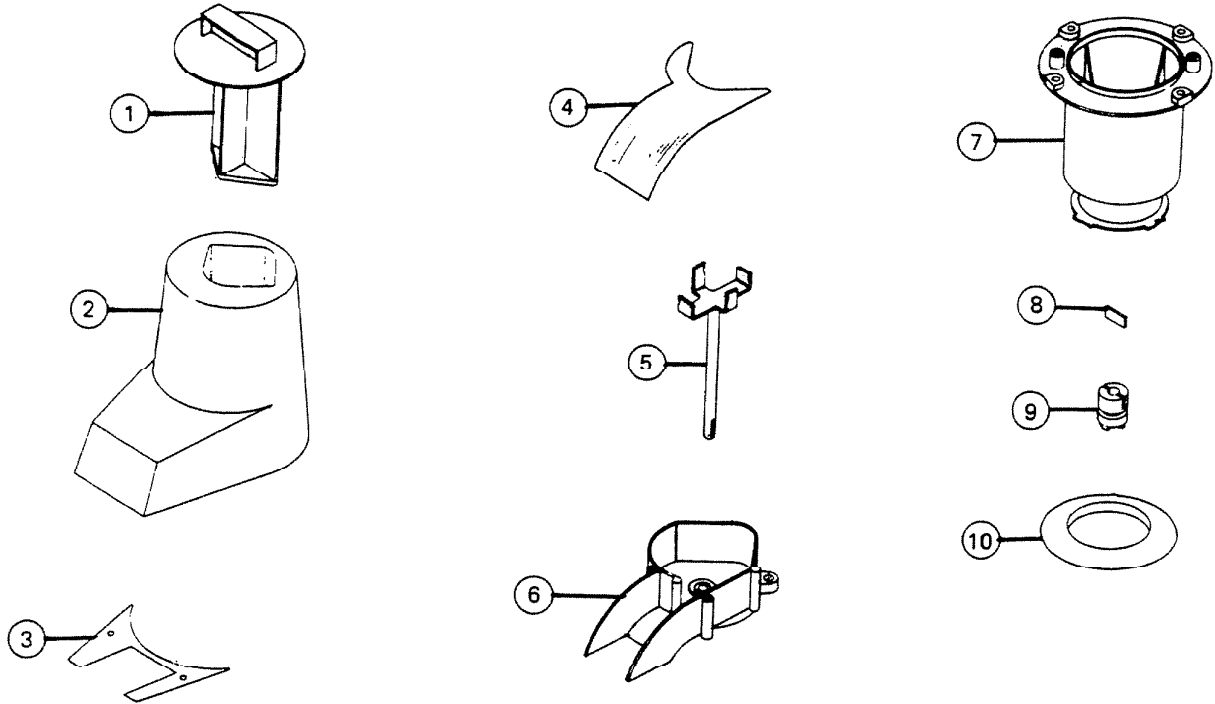


# PARTS LIST

EFFECTIVE DATE	MODEL	PRODUCT GROUP
MARCH 1982	280 REVISED	FOOD CENTER



REF.	ORIGINAL PART NO.	* PART DESCRIPTION	MODEL USED ON	CURRENT REPLACEMENT PART NO.
1	26593	CAP TAMPER	280	26593-000
2	26580	TOP COVER ASSEMBLY	280	VOID – NOT AVAILABLE
3	26581	COVER PLATE	280	26581-000
4	26571	BOWL COVER	280	26571-000
5	25910	CUTTER & SHAFT ASSEMBLY	280	25909 000
6	26566	BOWL W/BEARING	280	69491-000
7	26562	BASE ASSEMBLY	280	26562-000
8	25095	DRIVE KEY	280	25095-000
9	25165	CLUTCH	280	25165-000
10	26564	SEAL (RUBBER)	280	26564-000

Ni Tone

NOTE Always order by current part number