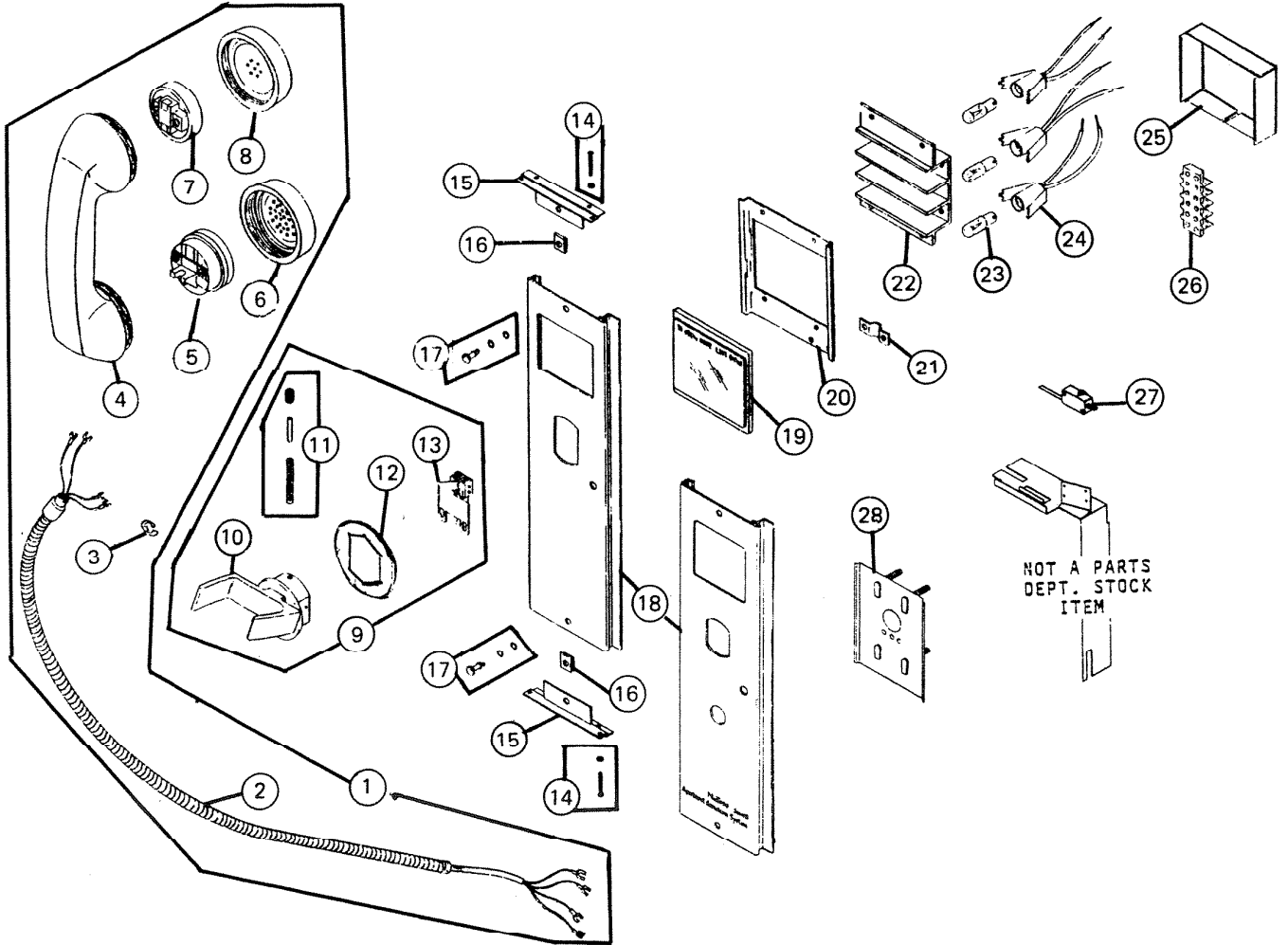


PARTS LIST

EFFECTIVE DATE	MODEL	PRODUCT GROUP
NOV. 1981	2720, 2720P B/A—S/A NEW	APARTMENT SECURITY



NOT A PARTS
DEPT. STOCK
ITEM

REF.	ORIGINAL PART NO.	* PART DESCRIPTION	MODEL USED ON	CURRENT REPLACEMENT PART NO.
1	36104	TELEPHONE HAND SET COM.	2720, 2720P B/A—S/A	36104—000
2	1752A	CABLE ASSY.	2720, 2720P B/A—S/A	1752A—000
3	1753A	"E" RING	2720, 2720P B/A—S/A	1753A—000
4	1755A	HAND SET HOUSING ONLY	2720, 2720P B/A—S/A	1755A—000
5	1756A	VOICE TRANSMITTER	2720, 2720P B/A—S/A	1756A—000
6	1757A	TRANSMITTER COVER	2720, 2720P B/A—S/A	1757A—000
7	1758A	TELEPHONE RECEIVER	2720, 2720P B/A—S/A	1758A—000

NuTone

NOTE: Always order by current part number.

REF	ORIGINAL PART NO	PART DESCRIPTION	MODEL USED ON	CURRENT REPLACEMENT PART NO	
8	1759A	RECEIVER COVER	2720,2720P B/A-S/A	1759A-000	
9	36103	TELEPHONE CRADLE	2720, 2720P B/A-S/A	36103-000	
10	1730A	CRADLE	2720,2720P B/A-S/A	1730A-000	
11	1731A	PIN, SPRING, SET SCREW, KIT	2720,2720P B/A-S/A	1731A-000	
12	1733A	MOUNTING PLATE	2720, 2720P B/A-S/A	1733A-000	
13	1734A	CONTACT ASSY.	2720, 2720P B/A-S/A	1734A-000	
14	1735A	HINGE PIN KIT	2720, 2720P B/A-S/A	1735A-000	
15	38485	BRACKET - DOOR MOUNT	SILVER	2720,2720P S/A	38485-014
			BRASS	2720, 2720P B/A	38485-019
16	39315	RECEPTACLE CLIP ON	2720, 2720P B/A-S/A	39315-000	
17	1703A	FASTENER KIT	SILVER	2720, 2720P S/A	1703A-000
	1685A		BRASS	2720, 2720P B/A	1685A-000
18	38801	PANEL - TELEPHONE	SILVER	2720 S/A	38801-014
			BRASS	2720 B/A	38801-019
	38808	PANEL-TELEPHONE W/POSTAL LOCK PROV.	SILVER	2720P S/A	38808-014
			BRASS	2720P B/A	38808-019
19	38806	LENS	2720, 2720P B/A-S/A	38806-000	
20	38846	LENS INSERT	2720, 2720P B/A-S/A	38846-000	
21	39604	CLAMP	2720, 2720P B/A-S/A	39604-000	
22	38805	LAMP HOLDER	2720, 2720P B/A-S/A	38805-206	
23	39138	BULB (1) 3-REQUIRED	2720, 2720P B/A-S/A	39138-000	
24	31886	LAMP SOCKET (1) 3-REQUIRED	2720, 2720P B/A-S/A	31886-000	
25	47631	LIGHT BARRIER	2720, 2720P B/A-S/A	47631-000	
26	39602	BARRIER TYPE TERMINAL STRIP	2720, 2720P B/A-S/A	39602-000	
27	34588	SWITCH - MICRO	2720P B/A-S/A	34588-000	
28	41338	MTG. PLATE ASSY. (POSTAL. LOCK)	2720P B/A-S/A	41338-000	