

EFFECTIVE DATE

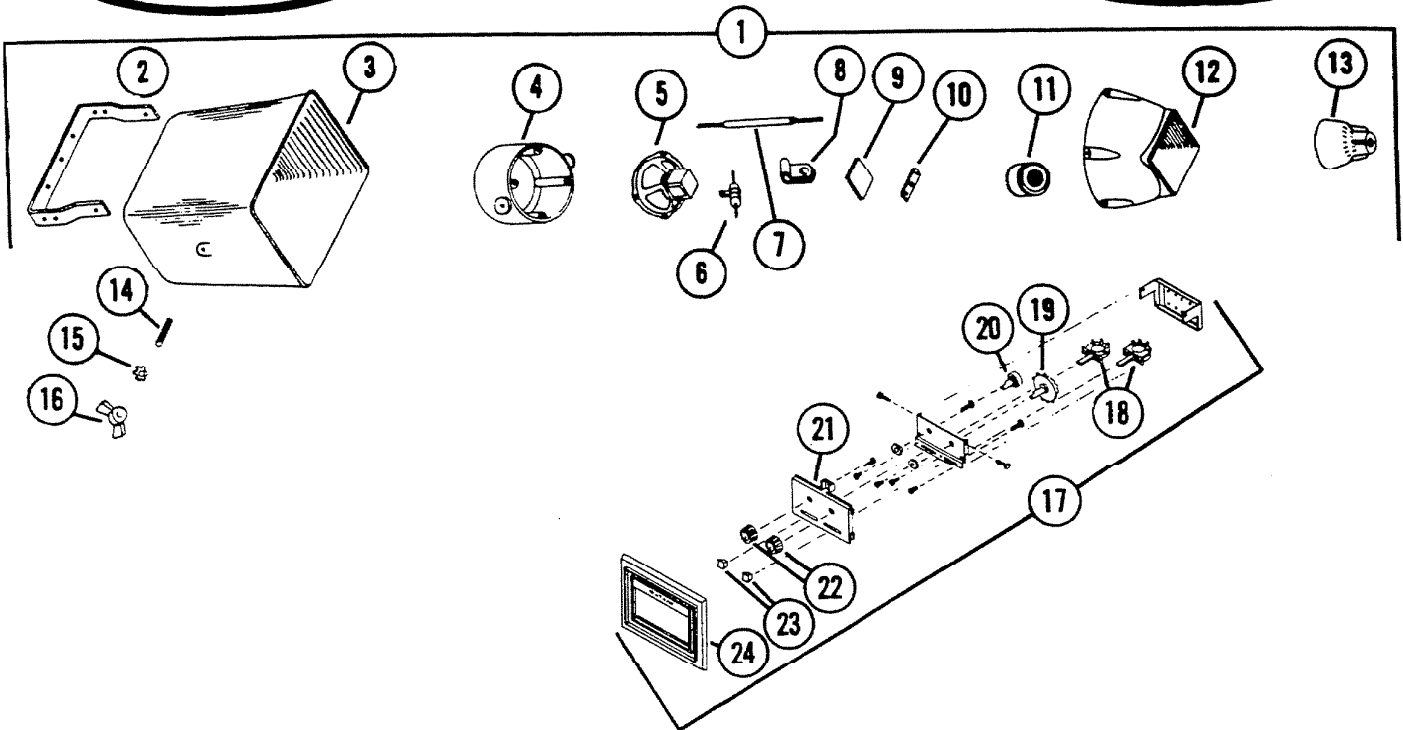
May 1, 1971

# NuTone PARTS LIST

MODEL

2574

Horn Speaker



REF.	PART NO.	*Part used on other model/s	PART DESCRIPTION
1	40619		Horn Speaker Assy. Ref. No's 2 thru 16
2	32148	*	"U" Bracket
3	32364	*	Horn
4	32365	*	Rear Housing
5	36023		Cone Speaker - 4 Ohm
6	35033	*	Condensator - 30 mfd
7	32570	*	Cable
8	31798	*	Cable Clamp
9	32360	*	Sound Absorber
10	32149	*	Unit Strap
11	36026		Unit Assembly (Speaker 4 ohms)
12	32367	*	Front Housing
13	32368	*	Reflector
14	31795	*	Stud (2 required)
15	31794	*	Lock Washer

PLEASE SEE OTHER SIDE

Order Parts From: PARTS DEPT. C/O

**NuTone** **SCOVILL**  
DIVISION

REF.	PART NO.	*Part used on other model/s	PART DESCRIPTION
16	31796	*	Wing Nut
17	69917		Bezel & Control Assy. Ref. No's 18, 19, 20, 21, 22,23,24,
18	34553	*	Switch - Lever
19	34531	*	Switch - Rotary 3 position
20	34024	*	Potentiometer
21	32474		Control Insert
22	31438	*	Knob Switch (2 required)
23	39199	*	Knob Lever (2 required)
24	32461		Bezel
--	40617		Envelope Assy. (not shown)
--	40618		Envelope Assy. (not shown)

Order Parts From: PARTS DEPT. C/O

**NuTone** 

DIVISION

Madison and Red Bank Rds., Cincinnati, O. 45227