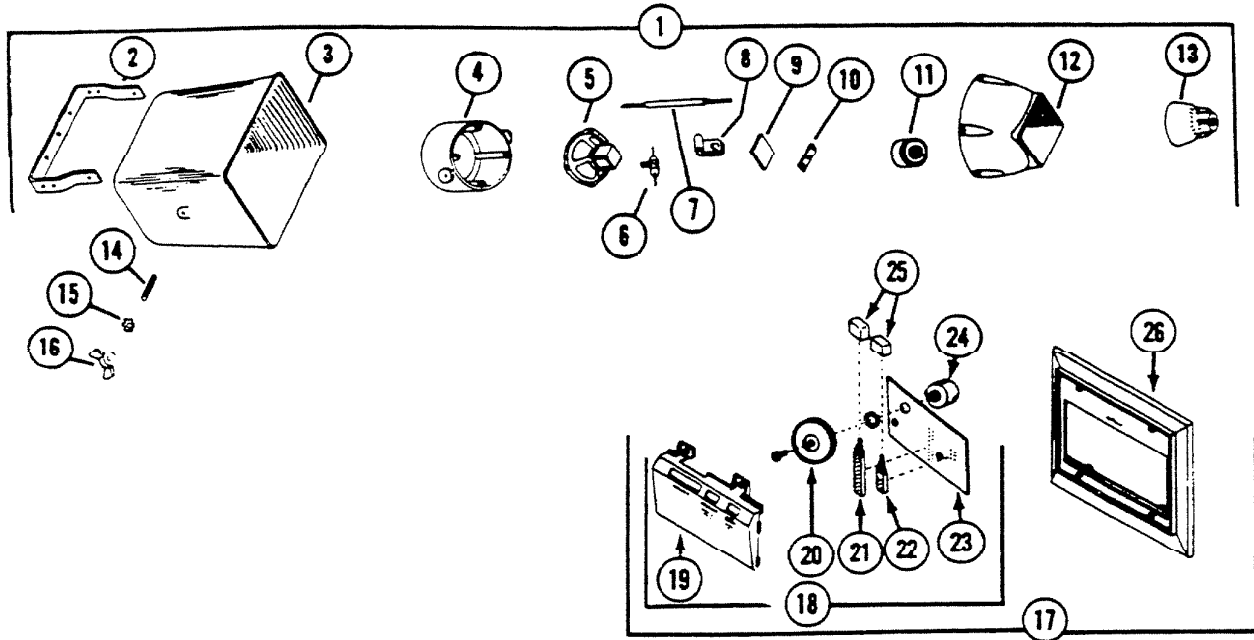


# PARTS LIST

|                       |                            |
|-----------------------|----------------------------|
| <b>MODEL</b>          | MODEL 2557<br>HORN SPEAKER |
| <b>EFFECTIVE DATE</b> | March 1, 1972              |



| REF. | PART NO. | * Part used on other models. | NOMENCLATURE                           |
|------|----------|------------------------------|--|
| 1    | 40620    |                              | Horn Speaker Assy. Ref. No's 2 thru 16 |
| 2    | 32148    | *                            | "U" Bracket                            |
| 3    | 32364    | *                            | Horn                                   |
| 4    | 32365    | *                            | Rear Housing                           |
| 5    | 36024    |                              | Cone Speaker - 4 ohm                   |
| 6    | 35034    | *                            | Condensor - 30 mfd                     |
| 7    | 32571    | *                            | Cable                                  |
| 8    | 31798    | *                            | Cable Clamp                            |
| 9    | 32366    | *                            | Sound Absorber                         |
| 10   | 32149    | *                            | Unit Strap                             |
| 11   | 36027    |                              | Unit Assembly (speaker 4 ohms)         |
| 12   | 32367    | *                            | Front Housing                          |
| 13   | 32368    | *                            | Reflector                              |
| 14   | 31795    | *                            | Stud (2 required)                      |

PLEASE SEE OTHER SIDE

**NuTone**

Order Parts From: Parts Department c/o  
NuTone  
Madison & Red Bank Road  
Cincinnati, Ohio 45227

| REF. | PART NO. | * Part used on other models. | NOMENCLATURE                                  |
|------|----------|------------------------------|---|
| 15   | 31794    | *                            | Lock Washer                                   |
| 16   | 31796    | *                            | Wing Nut                                      |
| 17   | 40687    |                              | Control & Bezel Assy. Complete                |
| 18   | 40698    |                              | Control Insert Complete                       |
| 19   | 32402    |                              | Insert  |
| 20   | 41256    |                              | Volume Knob                                   |
| 21   | 34576    |                              | Push Switch - 6 Pole                          |
| 22   | 34575    |                              | Push Switch - 2 Pole                          |
| 23   | 37516    |                              | P.C. Board - Remote                           |
| 24   | 34021    |                              | Potentiometer                                 |
| 25   | 31878    |                              | Pushbutton                                    |
| 26   | 32471    |                              | Bezel   |
| 27   | 40695    |                              | P.C. Board & Knob Assy. (Ref. No's 7 thru 12) |
| --   | 40617    |                              | Envelope Assy. (not shown)                    |
| --   | 40618    |                              | Envelope Assy. (not shown)                    |