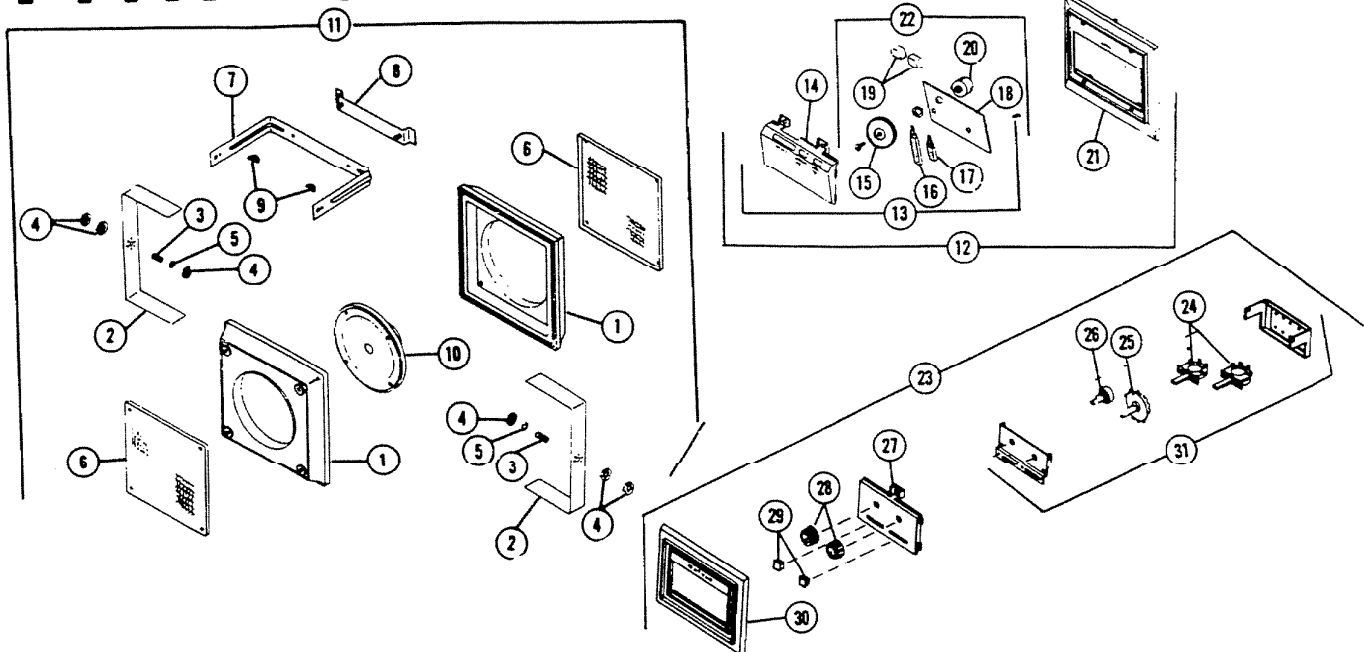


# PARTS LIST

<b>MODEL</b>	2525-2558-2576 OUT-DOOR SPEAKER
<b>EFFECTIVE DATE</b>	JANUARY, 1973



REF.	ORIGINAL PART NO.	* PART DESCRIPTION	MODEL USED ON	CURRENT REPLACEMENT PART NO.
COMMON PARTS				
1	38423-000	Outdoor Speaker Housing (2 required)		38423-000
2	38424-014	Connecting Strap (2 required)		38424-014
3	39267-000	Bushing (2 required)		39267-000
4	39268-015	Nut (6 required)		39268-015
5	11472-007	Lockwasher (2 required)		11472-007
6	38425-000	Grille (2 required)		38425-000
7	38447-014	Speaker Mounting Bracket		38447-014
8	41365-000	Wall Hanger Bracket Assembly		41365-000
9	63102-000	Wing Nut (2 required)		63102-000
10	36074-000	Speaker, 16 ohms.		36074-000
11	41362-000	Outdoor Speaker Assembly		41362-000
MODEL 2525 (USE MODEL 2515 REMOTE CONTROL)				
MODEL 2558				
12	41367-000	Control & Bezel Assy. Complete		41367-000
13	40698-000	Control Insert Complete		40698-000
PLEASE SEE OTHER SIDE				

**NuTone Division**  
**Scovill**

Order Parts From:  
Parts Department c/o NuTone  
P.O. Box 27 • Cincinnati, Ohio 45227

NOTE: Always order by  
current part number

REF.	ORIGINAL PART NO.	* PART DESCRIPTION	MODEL USED ON	CURRENT REPLACEMENT PART NO.
14	32402-000	Insert		41367-000
15	41266-000	Volume Knob Assy.		41266-000
16	34576-000	Push Switch - 6 Pole		34576-000
17	34575-000	Push Switch - 2 Pole		34575-000
18	37516-000	P/C Board - Remote		37516-000
19	34021-000	Potentiometer		34021-000
20	31878-000	Pushbutton		31878-000
21	32471-000	Bezel		32471-000
22	40695-000	P/C Board & Knob Assy.		40695-000
-	41369-000	Envelope Assy. (not shown)		41369-000
		MODEL 2576		
23	41368-000	Bezel & Control Assy.		41368-000
24	34553-000	Switch, Lever		34553-000
25	34531-000	Switch, Rotary 3 Position		34531-000
26	34024-000	Potentiometer		34024-000
27	32474-000	Control Insert		32474-000
28	39225-000	Switch Knob (2 required)		39225-000
29	39199-000	Lever Knob (2 required)		39199-000
30	32461-000	Bezel		32461-000
31	40249-000	Control Assy.		40249-000
-	41369-000	Envelope Assy. (not shown)		41369-000