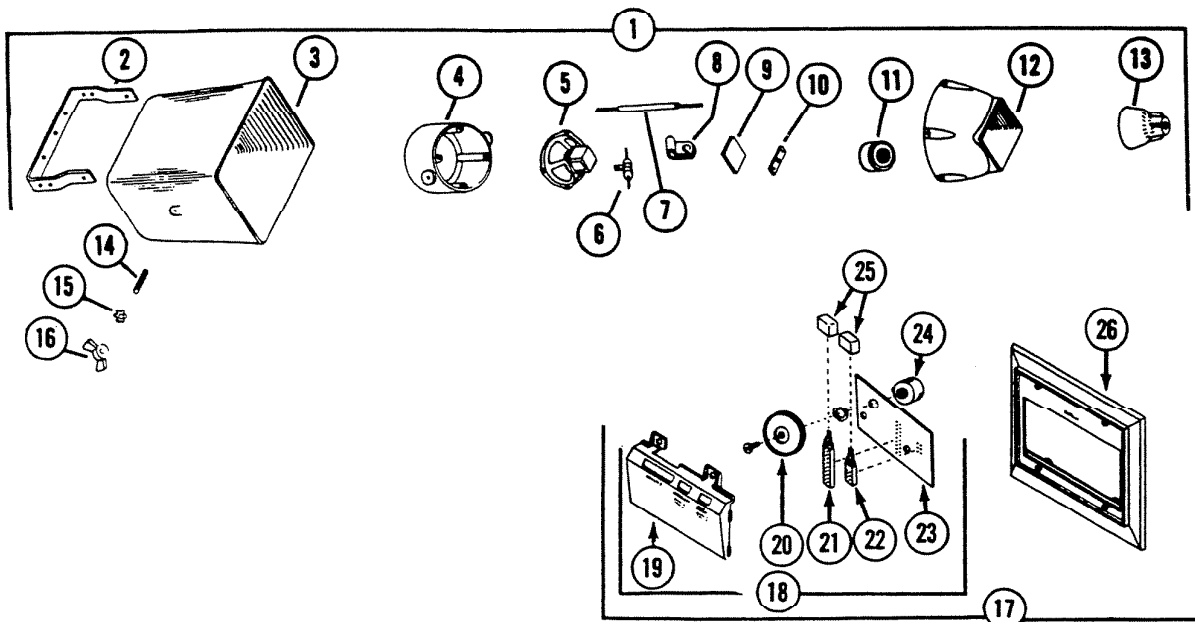


PARTS LIST

| | |
|-----------------------|----------------------|
| MODEL | 2517 HORN SPEAKER |
| EFFECTIVE DATE | January 1, 1972 |



| REF. | PART NO. | * Part used on other models. | NOMENCLATURE |
|------|----------|------------------------------|--|
| 1 | 40620 | | Horn Speaker Assy. Ref. No's 2 thru 16 |
| 2 | 32148 | * | "U" Bracket |
| 3 | 32364 | * | Horn |
| 4 | 32365 | * | Rear Housing |
| 5 | 36024 | | Cone Speaker - 4 ohm |
| 6 | 35034 | * | Condensor - 30 mfd |
| 7 | 32571 | * | Cable |
| 8 | 31798 | ^ | Cable Clamp |
| 9 | 32366 | * | Sound Absorber |
| 10 | 32149 | * | Unit Strap |
| 11 | 36027 | | Unit Assembly (speaker 4 ohms) |
| 12 | 32367 | * | Front Housing |
| 13 | 32368 | * | Reflector |
| 14 | 31795 | * | Stud (2 required) |
| 15 | 31794 | * | Lock Washer |

PLEASE SEE OTHER SIDE

NuTone Division

Scovill

Order Parts From: Parts Department c/o
NuTone
Madison & Red Bank Road
Cincinnati, Ohio 45227

| REF. | PART NO. | * Part used on other models. | NOMENCLATURE |
|------|----------|------------------------------|--------------|
|------|----------|------------------------------|--------------|

| | | | |
|----|-------|---|---|
| 16 | 31796 | * | Wing Nut |
| 17 | 40687 | | Control & Bezel Assy. Complete |
| 18 | 40698 | | Control Insert Complete |
| 19 | 32402 | | Insert |
| 20 | 41256 | | Volume Knob |
| 21 | 34576 | | Push Switch - 6 Pole |
| 22 | 34575 | | Push Switch - 2 Pole |
| 23 | 37516 | | P.C. Board - Remote |
| 24 | 34021 | | Potentiometer |
| 25 | 31878 | | Pushbutton |
| 26 | 32471 | | Bezel |
| 27 | 40695 | | P.C. Board & Knob Assy. (Ref. No's 7 thru 12) |
| -- | 40617 | | Envelope Assy. (Not Shown) |
| -- | 40618 | | Envelope Assy. (Not Shown) |