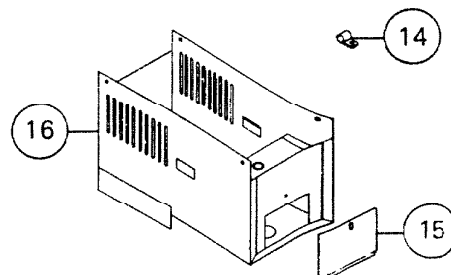
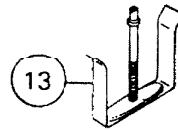
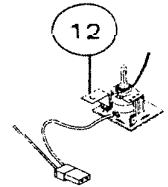
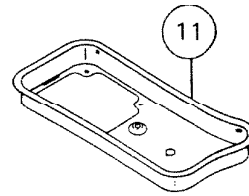
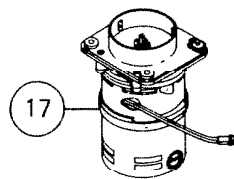
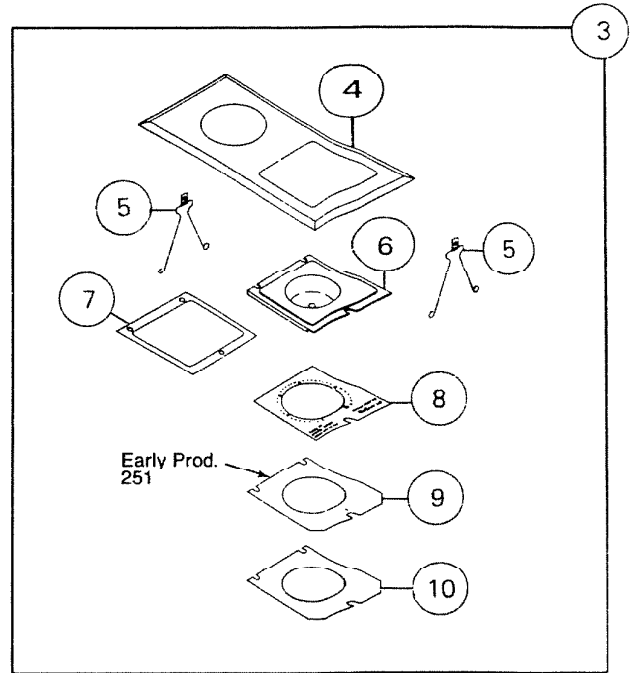
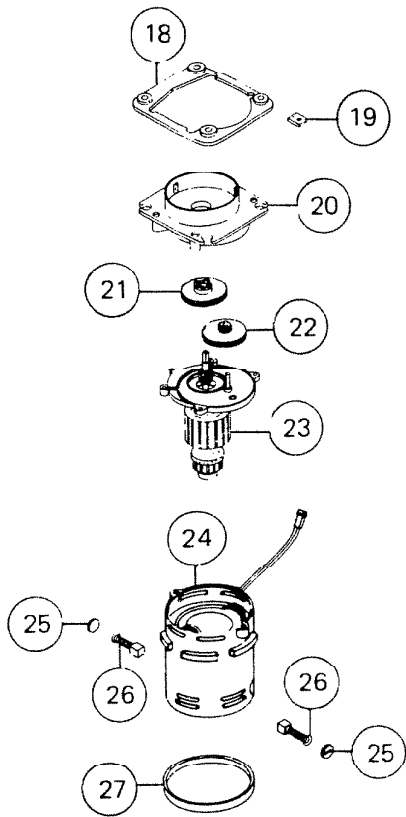


PARTS LIST

EFFECTIVE DATE	MODEL	PRODUCT GROUP
JAN. 1991	251 REVISED 251 WH NEW	FOOD CENTER



REF.	ORIGINAL PART NO.	*PART DESCRIPTION	MODEL USED ON	CURRENT REPLACEMENT PART NO.
1	64826	WELL COVER	251	64826-000
	36251		251WH	36251-000
2	67743	CONTROL KNOB	251	68918-000
	36254		251WH	36254-000
3	1234A	TOP PLATE ASSEMBLY—Complete	251	1234A-000
	1235A		251WH	1235A-000
4	1019A	TOP PLATE W/Motor Gasket	251	1019A-000
	2729A		251WH	2729A-000
5	69479	SPRING CLAMP ASSEMBLY (1)—2 Req.	All Models	69479-000
6	64818	CONTROL KNOB WELL	251	64818-000
	68919		251WH	68919-000
7	64817	SWITCH WELL GASKET	All Models	64817-000
8	67741	SPEED DATA PLATE	251	67741-000
	36253		251WH	36253-000
9	64820	PAD—Early Production Only	251	Void Not Available
10	64821	BACK-UP PLATE	All	64821-000
11	67728	MOTOR SUPPORT PLATE	Models	67728-005
12	69436	SWITCH—Complete W/Washers and Nuts	251	1079A-000
	1079A		251 251WH	
13	1006A	CLAMP BRACKET ASSEMBLY	1006A-000
14	39003	CABLE CLAMP	All	39003-000
15	17379	OUTLET BOX COVER	Models	17379-000
16	67722	HOUSING ASSEMBLY	67722-005
17	67738	MOTOR—Complete	67738-000

▲

NOTE: Always order by current part number.


REF.	ORIGINAL PART NO.	*PART DESCRIPTION	MODEL USED ON	CURRENT REPLACEMENT PART NO.
18	67739	MOTOR MOUNTING GASKET		67739-000
19	64809	GROUNDING STRAP		64809-000
20	69477	GEAR BOX HOUSING		69477-000
21	69442	GEAR CLUTCH—Metal		69442-000
22	69441	GEAR ASSEMBLY—Fiber	All	69441-000
23	1014A	ARMATURE—W/Bearing Plate	Models	1014A-000
24	1042A	FIELD W/MOTOR HOUSING		1042A-000
25	69476	BRUSH CAP SET (2)		69476-000
26	1013A	BRUSH SET (2)		1013A-000
27	64799	AIR BAFFLE ASSEMBLY		64799-000

"O" RING

25041-000

MOTOR GASKET

64840-000


NOTE: Always order by
current part number.