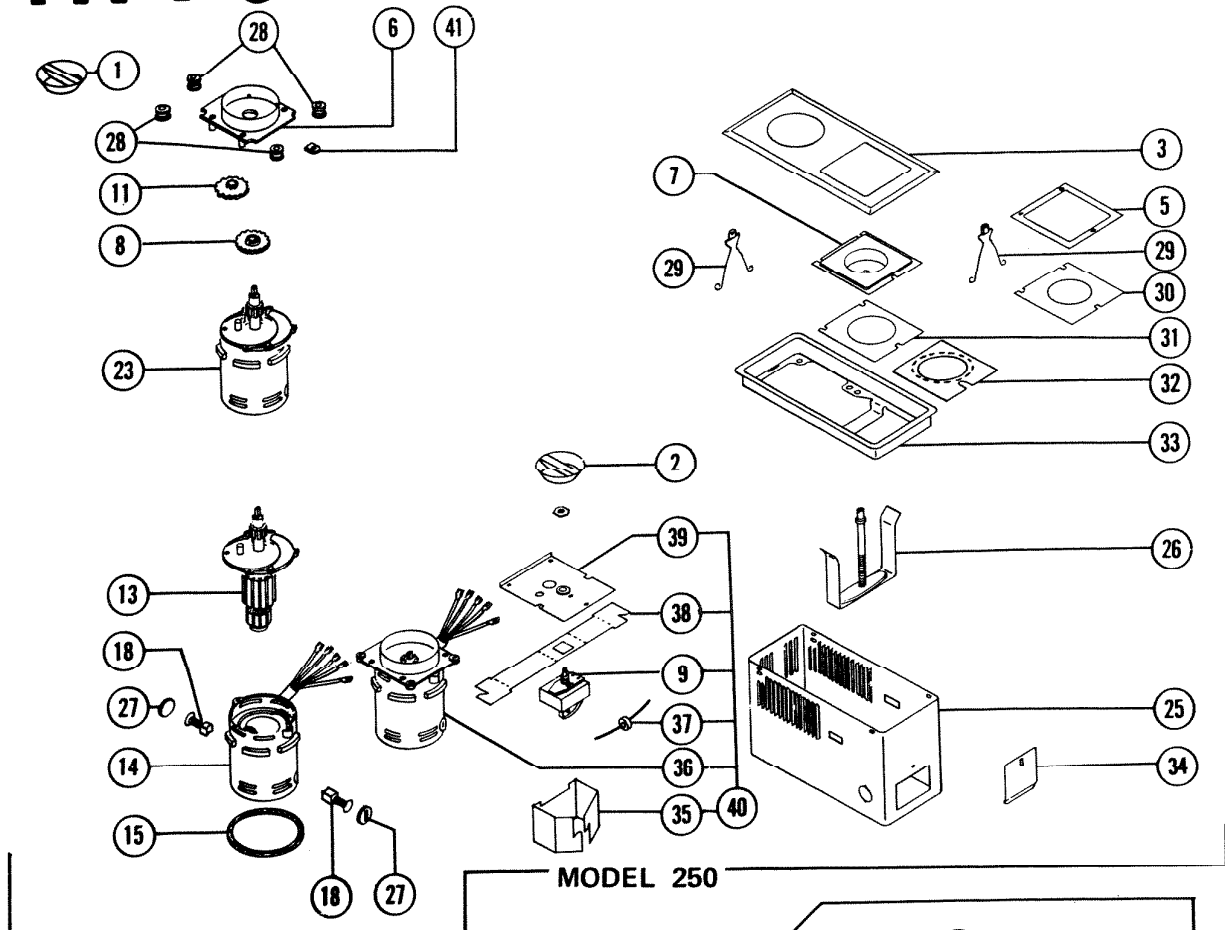
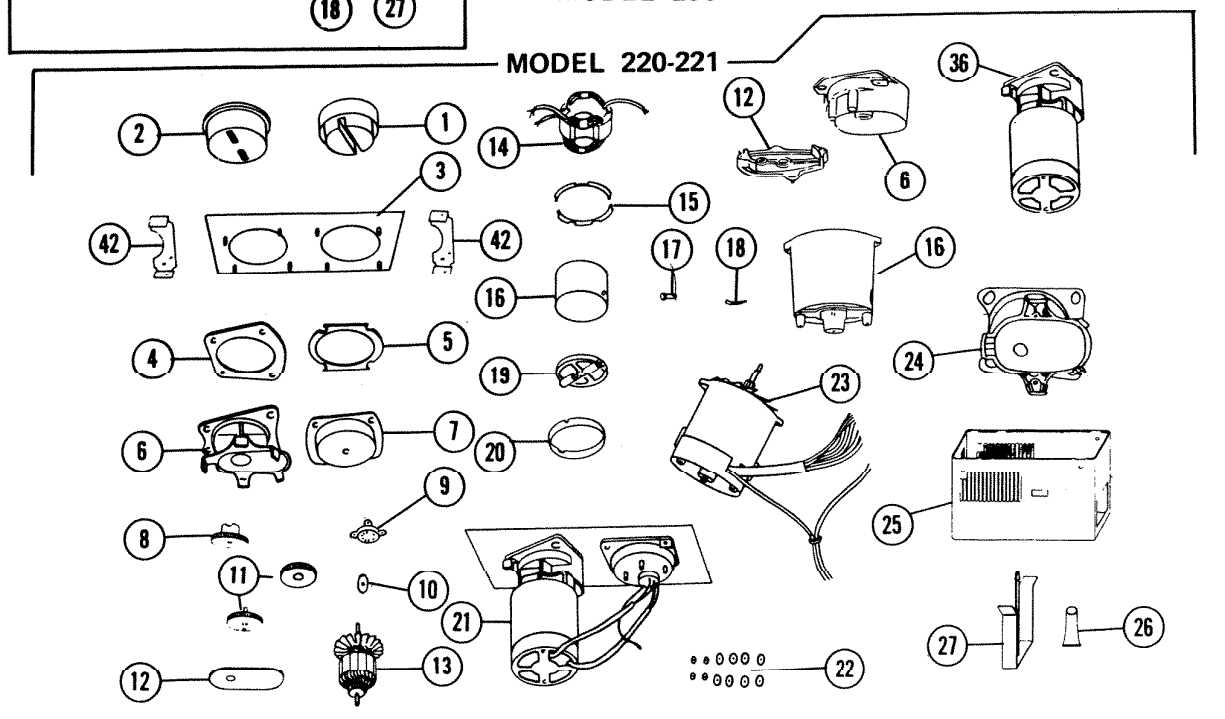


PARTS LIST

MODEL	220 - 221 - 250
EFFECTIVE DATE	REVISED DECEMBER, 1975



MODEL 250



MODEL 220-221

NuTone

Order Parts From:
 Parts Department c/o NuTone
 P.O. Box 27 • Cincinnati, Ohio 45227

REF.	ORIGINAL PART NO	* PART DESCRIPTION	MODEL USED ON	CURRENT REPLACEMENT PART NO
1	25045-000	WELL COVER	220 - 221	25045-000
	64826-000		250	64826-000
2	25044-000	SWITCH KNOB	220 - 221	25044-000
	64825-000		250	64825-000
2A	25073-000	HOUSING BRACKET	220 - 221	25073-000
3	25004-000	TOP PLATE W/NUTS & WASHERS W/GASKET	220 - 221	25004-000
	64814-000		250	64814-000
4	25017-000	VIBRATION PAD W/SPACER	220 - 221	25017-000
5	25390-000	SWITCH HOUSING GASKET	220 - 221	25390-000
	64817-000		250	64817-000
6	25085-000	GEAR BOX HOUSING	220	NOT AVAILABLE
	25504-000		221	25504-000
	29477-000		250	69477-000
7	25369-000	SWITCH HOUSING	220 - 221	25369-000
	64818-000		250	64818-000
8	25213-000	GEARED CLUTCH	220 - 221	25213-000
	69442-000		250	69442-000
9	25391-000	SWITCH	220 - 221	25391-000
	64803-000		250	64836-000
10	25512-000	WASHER	220 - 221	25512-000
11	25008-000	GEAR ASSEMBLY	220	25008-000
	25509-000		221	25509-000
	69441-000		250	69441-000
12	25087-000	COVER PLATE	220	NOT AVAILABLE
	25510-000		221	25510-000
13	69457-000	ARMATURE	220	29456-000
	25524-000		221	25556-000
	69440-000		250	69440-000
14	69457-000	FIELD	220	69456-000
	25520-000		221	25555-000
	69469-000		250	69469-000
15	69452-000	BAFFLE SET	221	69452-000
	64799-000		250	64799-000
16	25024-000	MOTOR HOUSING	220	NOT AVAILABLE
	25514-000		221	25514-005
17	25030-000	BRUSH HOLDER W/CAP	220	25030-000
	25537-000		221	25537-000
	69478-000		250	69478-000
18	15029-000	BRUSH & SPRING	220 - 221	69497-000
	69472-000		250	69472-000
19	69453-000	END PLATE ASSEMBLY	221	69453-000
20	25081-000	EXTENSION RING	220	NOT AVAILABLE
	25547-000		221	25547-000
21	69455-000	MOTOR ASS'Y. W/TOP PLATE, MOTOR GEAR BOX, & SWITCH (CONT'D.)	220	NOT AVAILABLE
			221	

REF.	ORIGINAL PART NO.	* PART DESCRIPTION	MODEL USED ON	CURRENT REPLACEMENT PART NO.
22	69454-000	WASHER SET	220 - 221	69454-000
23	69459-000	MOTOR (HOUSING, ARMATURE, & FIFLD)	220	NOT AVAILABLE
	69471-000		250	69471-000
24	25001-000	GEAR BOX ASSEMBLY	220	NOT AVAILABLE
	25503-000		221	25503-000
25	25060-000	HOUSING ASSEMBLY	220	NOT AVAILABLE
	25550-000		221	25550-005
	64789-000		250	64789-005
26	25360-000	CLAMP BRACKET ASSEMBLY	221	25360-000
	69474-000		250	69474-000
26	25266-000	MASTIC	220 - 221	25266-000
27	69476-000	BRUSH CAP	250	69476-000
28	69481-000	GROMMET SET (2) W/WASHERS	250	69481-000
29	69479-000	SPRING CLAMP ASSEMBLY (2)	250	69479-000
30	64820-000	PAD	250	64820-000
31	64821-000	BACKUP PLATE	250	64821-000
32	64819-000	SPEED DIAL PLATE	250	64819-000
33	64796-000	MOTOR SUPPORT PLATE	250	64796-000
34	17379-000	OUTLET BOX COVER	250	17379-000
35	64860-000	ENCLOSURE RETAINER	250	64860-000
36	69456-000	MOTOR & GEAR BOX ASSEMBLY	221	69456-000
	64798-000		250	64798-000
37	64805-000	DIODE ASSEMBLY	250	64805-000
38	64859-000	SWITCH ENCLOSURE	250	64859-000
39	64802-000	SWITCH PLATE	250	64802-000
40	69443-000	MOTOR AND SWITCH PLATE ASSEMBLY	250	69443-000
41	64809-000	GROMMET STRAP	250	64809-000
-	64840-000	GASKET & MOTOR TO TOP PLATE (not shown)	250	64840-000
42	25073-000	HOUSING BRACKET	220 - 221	25073-000