

## PARTS LIST

Ref. No.	Part No.	Description	Ref. No.	Part No.	Description
V1		12BE6, Converter	R6		Resistor, 2.2 meg., 1/2 Watt
V2		12BA6, IF Amplifier	R7		Resistor, 1000Ω, 1/2 Watt
V3		12AV6, Det.-AVC-AF Amplifier	R8		Resistor, 68Ω, 1/2 Watt
V4		12AV6, Intercom Preamplifier	R9		Resistor, 100K, 1/2 Watt
V5		35C5, Output	R10		Resistor, 6.8 meg., 1/2 Watt
V6		35W4, Rectifier	R11		Resistor, 3.3Ω, 1/2 Watt
C1A	35000	Cap., Elect., 80 mfd @ 150V.	R12		Resistor, 10K, 1/2 Watt
C1B		Cap., Elect., 40 mfd @ 150V.	R13		Resistor, 6.8 meg., 1/2 Watt
C1C		Cap., Elect., 40 mfd @ 150V.	R14		Resistor, 220K, 1/2 Watt
C2		Cap., Ceramic Disc, 10 mmf. @ 1000V. 10% NPO	R15		Resistor, 1.5 meg., 1/2 Watt
C3		Cap., Ceramic Disc, 10 mmf. @ 1000V. 10% NPO	R16		Resistor, 180Ω, 1/2 Watt
C4		Cap., Molded Tub., .05 mfd. @ 400V.	R17		Resistor, 250Ω, 5 Watt
C5		Cap., Ceramic Disc, 7.5 mmf. @ 1000V. 10% NPO	R18		Resistor, 5600Ω, 1/2 Watt
C6		Cap., Ceramic Disc, 30 mmf. @ 1000V. 10% N750	R19		Resistor, 100K, 1/2 Watt
C7		Cap., Ceramic Disc, 10,000 mmf. @ 1000V. GMV	R20		Resistor, 10Ω, 1/2 Watt
C8		Cap., Ceramic Disc, 10,000 mmf. @ 1000V. GMV	K1	37000	Component Combination (Diode Filter); Consists of 50K Resistor and Two 100 mmf. Capacitors
C9		Cap., Ceramic Disc, 10,000 mmf. @ 600V. GMV	K2	37001	Component Combination (Audio Couplate); Consists of - Two 200 mmf. Capacitors, One 5000 mmf Capacitor, and Two 470K Resistors
C10		Cap., Ceramic Disc, 10,000 mmf. @ 1000V. 20%	T1	30501	Input Transformer
C11		Cap., Ceramic Disc, 5000 mmf. @ 600V. GMV	T2	30500	Output Transformer
C12		Cap., Ceramic Disc, 10,000 mmf. @ 1000V. GMV	L1	30509	Antenna Coil
C13		Cap., Ceramic Disc, 10,000 mmf. @ 600V. GMV	L2	30012	Oscillator Coil
C14		Cap., Ceramic Disc, 220 mmf. @ 1000V. GMV	L3	30004	Input IF
C15		Cap., Ceramic Disc, 1000 mmf. @ 1000V. GMV	L4	30004	Output IF
C16		Cap., Molded Tub., .01 mfd. @ 400V.	SP1	36006	Master Station Speaker (4" Square, 3-4Ω)
C17		Cap., Molded Tub., .05 mfd. @ 600V.	SP2	*	Room Remote Station Speaker (4" Square, 3-4Ω)
C18		Cap., Molded Tub., .05 mfd. @ 600V.	SP3	*	Outside Remote Station Speaker (3 1/2" Square, 3-4Ω)
R1	34002	Master Volume Control & Switch. 500K	M1	31015	Neon Indicator
R2	34011	Master Speaker Volume Control, 20Ω W.W.	M2	35003	Tuning Gang, 2 Section
R3	34011	Remote Speaker Volume Control, 20Ω W.W.	M3	34502	Switch, Master Function Selector; Rotary, Wafer-Type 5 Position (5 th Position Spring Return)
R4		Resistor, 22K, 1/2 Watt	M4	34503	Switch, Remote Station Selector; Single Pole 3 Position, Slide Type (8 Used)
R5		Resistor, 2.2 meg., 1/2 Watt	M5	*	Switch, Room Remote "Talk-Listen" Switch; Single Pole Double Throw, Spring Return
			M6	7608	Phono Jack
			M7	31026	Power Interlock Plug (Recessed)
			M8	31004	Remote Station Hook-Up Terminal Strip (3 Used)

\* For part numbers, refer to Factory Parts Price Lists covering Remote Speaker Assemblies for Models 2006 and 2025.

**NuTone**

# Nutone

## Supplemental Information

### MODELS 2011-2012

#### Intercom—Radio

The following parts have been changed in later productions: Please mark your service manual accordingly.

Audio circuit change (effective on sets manufactured since March, 1959). Resistor R-9 has been moved from its position between the volume control and #12 contact on M3 switch rear to a position between #1 contact of M3 switch rear and junction of K1 and R6. The value of this resistor has changed from 100K-ohm to 390K-ohm and the resistor is designated as R21.

Reason: Better intercom volume over radio with increased phonograph volume.

Outdoor remote change Model 2005 (effective January, 1959). Incorporated a talk-listen switch

and will be wired with 3 conductor cable, (same as the inside remotes.)

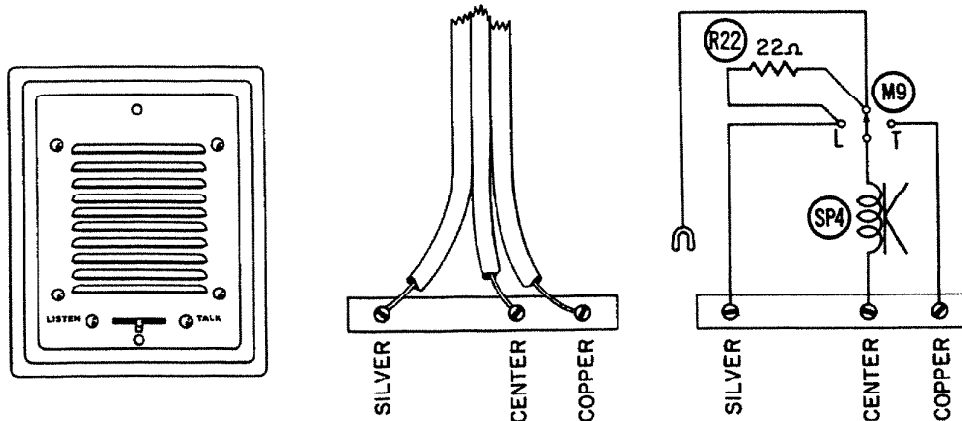
#### INSTALLATION

##### For Door

Connect the three intercom wires to the terminals on the speaker. This allows reduced volume from the speaker when the switch is in the center position. For maximum volume switch must be moved to listen position

##### For Patio

Remove the insulation from the lug of jumper wire and connect lug to the terminal marked "silver" along with the intercom wire. Also, connect the "center" and "copper" wires. This connection allows full volume when the switch is in the center position.



#### PARTS LIST

Ref. No.	Nutone Part No.	Description	Ref. No.	Nutone Part No.	Description
M9	34504	Switch, single pole—3 position lever type (spring return to center)		7630-2	6-32 × 1 Phil. Oval Hd. Screw, Brass (to mount copper enamel master panel to wall box)
R21	33101-R394	Resistor, 390K ½ watt		7630-39	6-32 × 1 Phil. Oval Hd. Screw, Nickel (to mount aluminum enamel master panel to wall box)
SP4	36003	Speaker, outside remote 3½" sq. 3-4 ohms (3 terminal)		7550	Room designating name strip. (Paper gum backing)
	7631-2	4-40 × ½ Phil. Oval Hd. Screw, Brass (used to right and left of "NuTone" nameplate on copper enamel panel)		31011	Grille "Dot" fasteners (to hold grille to chassis front)
	7631-39	4-40 × ½ Phil. Oval Hd. Screw, Nickel (used to right and left of "NuTone" nameplate on aluminum enamel panel)		37003	Grille backing (black fiber)
	11159	4-40 Hex Cad. Plate Stl. nuts for part 7631-39	R22	7707	Knob for M9 switch
				33101-R220	Resistor, 22 ohms ½ watt (outside remote)

Printed in U.S.A.